

NOTES

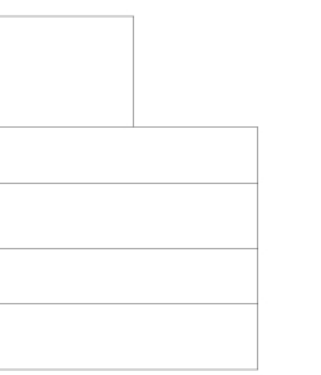
1. PIPE SCRIM - 1" COPPER PIPE AT 4" O.C.
2. SCRIM SUPPORT STRUCTURE - 4" PAINTED STEEL PIPE ATTACHED TO STEEL BEAMS
3. STEEL COLUMN - PAINTED
4. STEEL BEAM - PAINTED
5. 1" TINTED LOW E INSULATED GLASS IN ALUMINUM STOREFRONT SYSTEM
6. HORIZONTAL STEEL SUPPORT MEMBER FOR ALUMINUM STOREFRONT SYSTEM - PAINTED
7. EXISTING UTILITY TUNNEL TO REMAIN
8. ALUMINUM ENTRANCE DOOR
9. EXISTING GAS LINE TO REMAIN
10. EXISTING BUILDING TO REMAIN
11. EXISTING CONCRETE CANOPY TO BE REMOVED - PATCH BACK CONCRETE TO MATCH
12. NEW ADA RAMP
13. NEW STEEL DOOR AND FRAME
14. EXISTING BUILDING BEYOND
15. TRANSLUCENT WALL - 1/4" FIBERGLASS PANEL ON INTERIOR AND EXTERIOR SURFACE OVER BACK TO BACK PERFORATED 3" GALVANIZED METAL DECK
16. TRANSLUCENT STAIR ENCLOSURE - 1/4" FIBERGLASS PANEL ON INTERIOR AND EXTERIOR SURFACE OVER BACK TO BACK PERFORATED 3" GALVANIZED METAL DECK
17. TRANSLUCENT EXHAUST FAN ENCLOSURE - 1/4" FIBERGLASS PANEL ON INTERIOR AND EXTERIOR SURFACE OVER BACK TO BACK PERFORATED 3" GALVANIZED METAL DECK
18. TRANSLUCENT SKYLIGHT ENCLOSURE - 1/4" FIBERGLASS PANEL ON INTERIOR AND EXTERIOR SURFACE OVER BACK TO BACK PERFORATED 3" GALVANIZED METAL DECK
19. EXISTING WATER LINE

MARCH 12, 2010
Schematic Design
r+b Job #: 0209

UA #: 08-8826

LABORATORY OF TREE-RING RESEARCH
BRYANT BANNISTER TREE-RING BUILDING
 University of Arizona - Tucson, Arizona

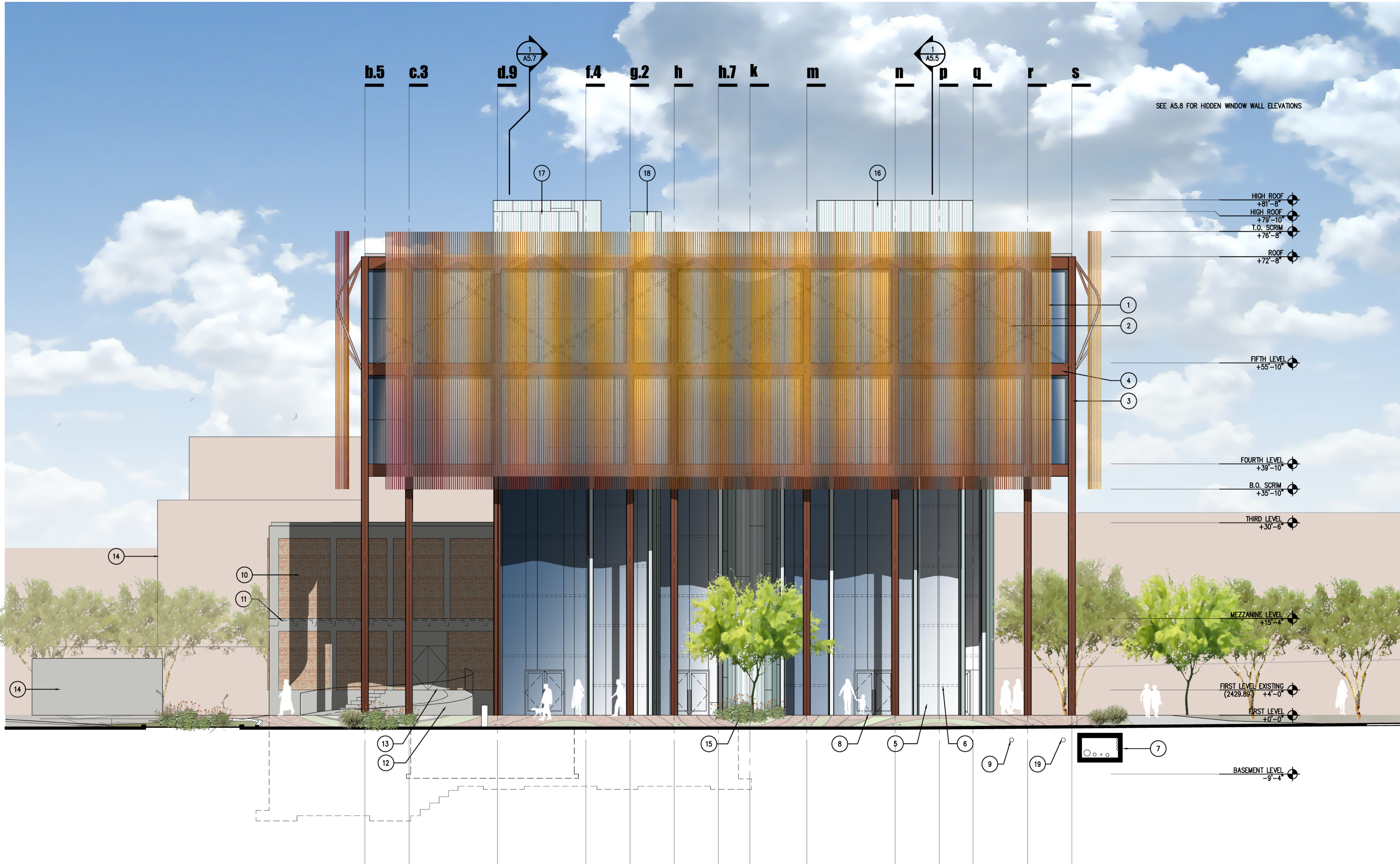
KEYPLAN



ELEVATION AND SECTION

A5.0

1" = 8'-0"



1 | ELEVATION - SOUTH

0 2 4 8

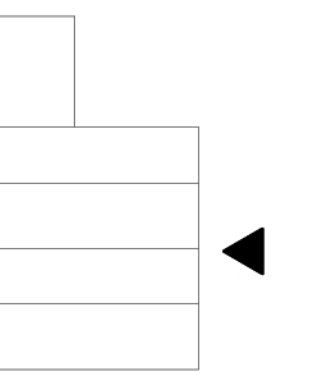
NOTES

1. PIPE SCRIM - 1" COPPER PIPE AT 4" O.C.
2. SCRIM SUPPORT STRUCTURE - 4" PAINTED STEEL PIPE ATTACHED TO STEEL BEAMS
3. STEEL COLUMN - PAINTED
4. STEEL BEAM BEYOND- PAINTED
5. EXISTING BUILDING TO REMAIN
6. NEW ENCLOSURE FOR EXTENSION OF EXISTING STAIR TO ROOF LEVEL - 1/4" FIBERGLASS PANEL ON INTERIOR AND EXTERIOR SURFACE OVER BACK TO BACK PERFORATED 3" GALVANIZED METAL DECK
7. TRANSLUCENT WALL - 1/4" FIBERGLASS PANEL ON INTERIOR AND EXTERIOR SURFACE OVER BACK TO BACK PERFORATED 3" GALVANIZED METAL DECK
8. TRANSLUCENT SKYLIGHT ENCLOSURE - 1/4" FIBERGLASS PANEL ON INTERIOR AND EXTERIOR SURFACE OVER BACK TO BACK PERFORATED 3" GALVANIZED METAL DECK
9. TRANSLUCENT STAIR ENCLOSURE - 1/4" FIBERGLASS PANEL ON INTERIOR AND EXTERIOR SURFACE OVER BACK TO BACK PERFORATED 3" GALVANIZED METAL DECK
10. EXISTING GLAZING TO REMAIN
11. TRANSLUCENT EXHAUST FAN ENCLOSURE - 1/4" FIBERGLASS PANEL ON INTERIOR AND EXTERIOR SURFACE OVER BACK TO BACK PERFORATED 3" GALVANIZED METAL DECK

MARCH 12, 2010
 Schematic Design
 r+b Job #: 0209
 UA #: 08-8826

LABORATORY OF TREE-RING RESEARCH
BRYANT BANNISTER TREE-RING BUILDING
 University of Arizona - Tucson, Arizona

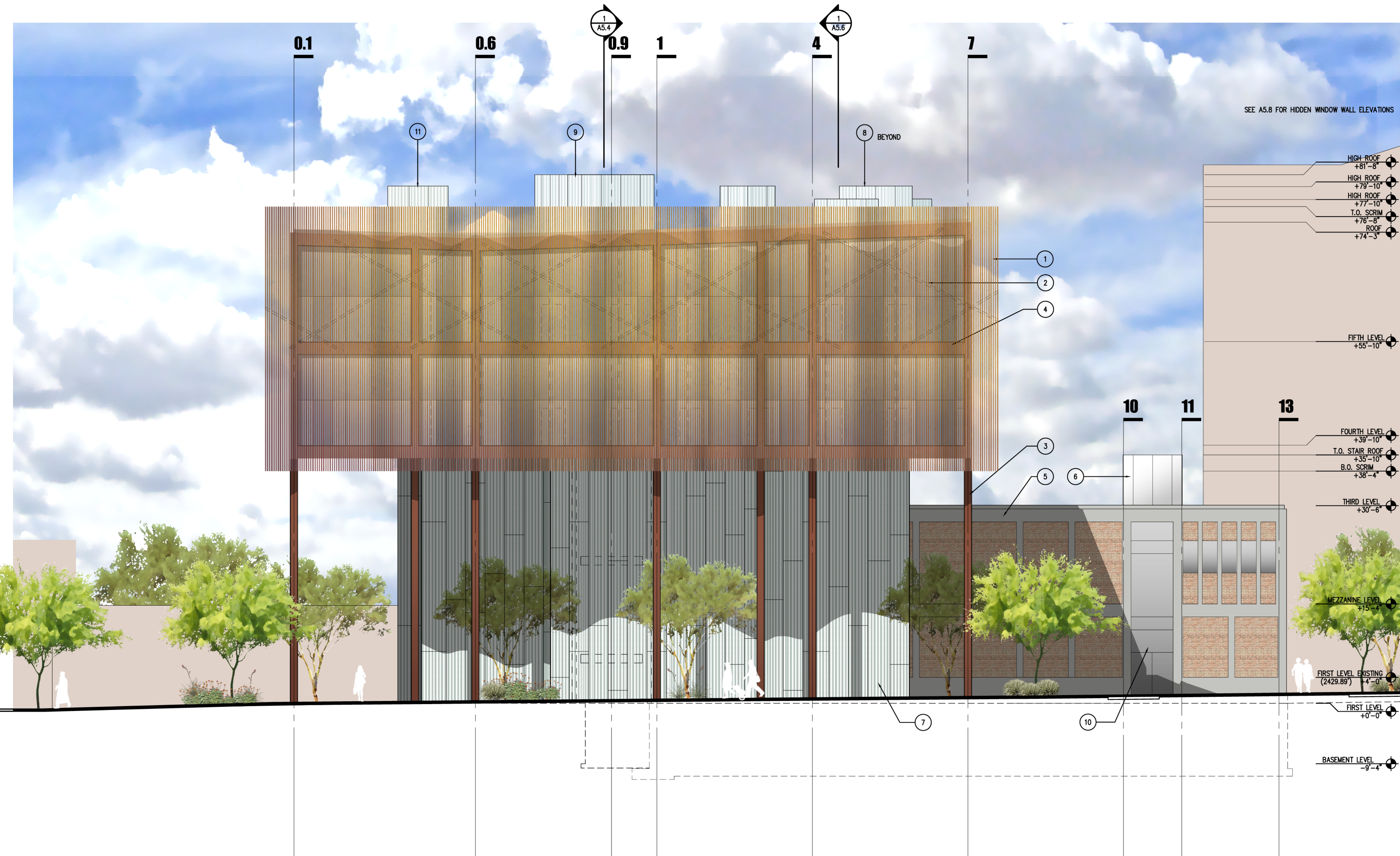
KEYPLAN



ELEVATION AND SECTION

A5.1

1" = 8'-0"



1 ELEVATION - EAST

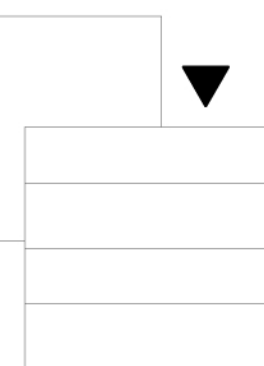
0 2 4 8

NOTES

1. PIPE SCRIM - 1" COPPER PIPE AT 4" O.C.
2. SCRIM SUPPORT STRUCTURE - 4" PAINTED STEEL PIPE ATTACHED TO STEEL BEAMS
3. 1" TINTED LOW E INSULATED GLASS IN ALUMINUM STOREFRONT SYSTEM
4. EXISTING BUILDING TO REMAIN
5. NEW ENCLOSURE FOR EXTENSION OF EXISTING STAIR TO ROOF LEVEL - 1/4" FIBERGLASS PANEL ON INTERIOR AND EXTERIOR SURFACE OVER BACK PERFORATED 3" GALVANIZED METAL DECK
6. EXISTING STAIR TO REMAIN
7. ALUMINUM ENTRANCE DOOR
8. HORIZONTAL STEEL SUPPORT MEMBER FOR ALUMINUM STOREFRONT SYSTEM - PAINTED
9. STEEL COLUMN - PAINTED
10. STEEL BEAM - PAINTED
11. TRANSLUCENT SKYLIGHT ENCLOSURE - 1/4" FIBERGLASS PANEL ON INTERIOR AND EXTERIOR SURFACE OVER BACK PERFORATED 3" GALVANIZED METAL DECK
12. TRANSLUCENT ELEVATOR EQUIPMENT ENCLOSURE - 1/4" FIBERGLASS PANEL ON INTERIOR AND EXTERIOR SURFACE OVER BACK TO BACK PERFORATED 3" GALVANIZED METAL DECK
13. TRANSLUCENT STAIR ENCLOSURE - 1/4" FIBERGLASS PANEL ON INTERIOR AND EXTERIOR SURFACE OVER BACK TO BACK PERFORATED 3" GALVANIZED METAL DECK
14. FROSTED FILM ON INSIDE FACE OF GLAZING
15. NEW EMERGENCY GENERATOR
16. NEW TRANSFORMER

LABORATORY OF TREE-RING RESEARCH
BRYANT BANNISTER TREE-RING BUILDING
University of Arizona - Tucson, Arizona

KEYPLAN



ELEVATION AND SECTION

A5.2

1" = 8'-0"



1 ELEVATION - NORTH

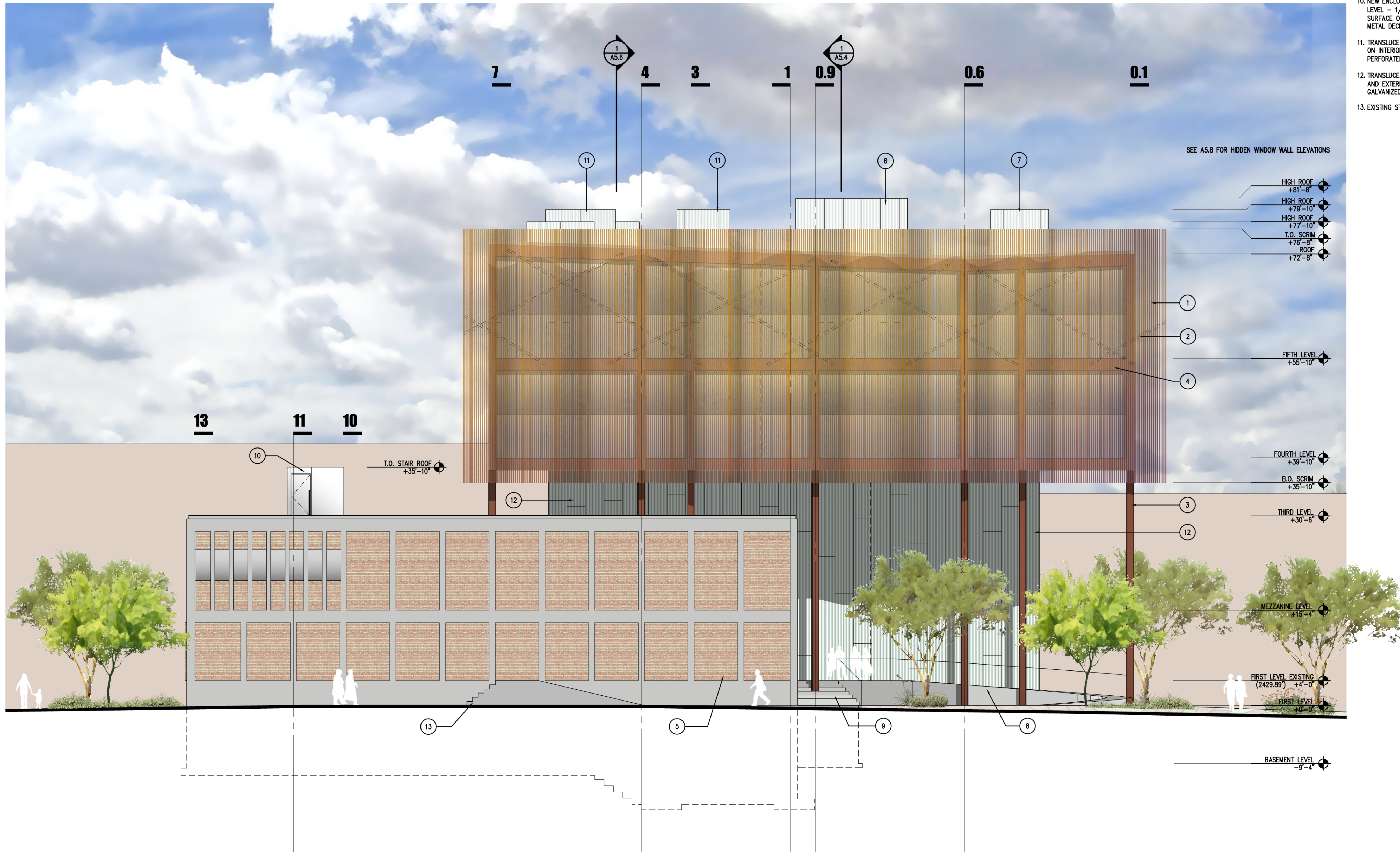
0 2 4 8

NOTES

1. PIPE SCRIM - 1" COPPER PIPE AT 4" O.C.
2. SCRIM SUPPORT STRUCTURE - 4" PAINTED STEEL PIPE ATTACHED TO STEEL BEAMS
3. STEEL COLUMN - PAINTED
4. STEEL BEAM BEYOND- PAINTED
5. EXISTING BUILDING TO REMAIN
6. TRANSLUCENT ELEVATOR EQUIPMENT ENCLOSURE - 1/4" FIBERGLASS PANEL ON INTERIOR AND EXTERIOR SURFACE OVER BACK TO BACK PERFORATED 3" GALVANIZED METAL DECK
7. TRANSLUCENT EXHAUST FAN ENCLOSURE - 1/4" FIBERGLASS PANEL ON INTERIOR AND EXTERIOR SURFACE OVER BACK TO BACK PERFORATED 3" GALVANIZED METAL DECK
8. NEW ADA RAMP
9. NEW CONCRETE STAIR
10. NEW ENCLOSURE FOR EXTENSION OF EXISTING STAIR TO ROOF LEVEL - 1/4" FIBERGLASS PANEL ON INTERIOR AND EXTERIOR SURFACE OVER BACK TO BACK PERFORATED 3" GALVANIZED METAL DECK
11. TRANSLUCENT SKYLIGHT ENCLOSURE - 1/4" FIBERGLASS PANEL ON INTERIOR AND EXTERIOR SURFACE OVER BACK TO BACK PERFORATED 3" GALVANIZED METAL DECK
12. TRANSLUCENT WALL - 1/4" FIBERGLASS PANEL ON INTERIOR AND EXTERIOR SURFACE OVER BACK TO BACK PERFORATED 3" GALVANIZED METAL DECK
13. EXISTING STAIR TO REMAIN

MARCH 12, 2010
 Schematic Design
 r+b Job #: 0209
 UA #: 08-8826

LABORATORY OF TREE-RING RESEARCH
BRYANT BANNISTER TREE-RING BUILDING
 University of Arizona - Tucson, Arizona



1 ELEVATION - WEST

0 2 4 8

KEYPLAN

ELEVATION AND SECTION

A5.3

1" = 8'-0"

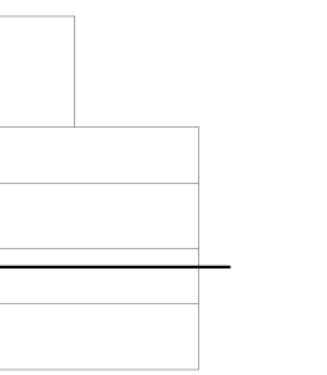
NOTES

1. PIPE SCRIM - 1" COPPER PIPE AT 4" O.C.
2. SCRIM SUPPORT STRUCTURE - 4" PAINTED STEEL PIPE ATTACHED TO STEEL BEAMS
3. STEEL COLUMN - PAINTED
4. DUCTWORK
5. TRANSLUCENT WALL - 1/4" FIBERGLASS PANEL ON INTERIOR AND EXTERIOR SURFACE OVER BACK TO BACK PERFORATED 3" GALVANIZED METAL DECK
6. CLERESTORY GLASS
7. EXIT ACCESS STAIR
8. PARTITION WALL
9. TRANSLUCENT STAIR ENCLOSURE - 1/4" FIBERGLASS PANEL ON INTERIOR AND EXTERIOR SURFACE OVER BACK TO BACK PERFORATED 3" GALVANIZED METAL DECK
10. EXISTING UTILITY TUNNEL TO REMAIN
11. EXISTING GAS LINE TO REMAIN
12. BUILDING FOUNDATION - SEE STRUCTURAL
13. TRANSLUCENT SKYLIGHT ENCLOSURE - 1/4" FIBERGLASS PANEL ON INTERIOR AND EXTERIOR SURFACE OVER BACK TO BACK PERFORATED 3" GALVANIZED METAL DECK
14. 1" INSULATED LOW E GLASS IN ALUMINUM SKYLIGHT SYSTEM
15. BUILT-UP MODIFIED BITUMEN ROOFING
16. EXISTING BUILDING BEYOND TO REMAIN
17. EXISTING WATER LINE TO REMAIN
18. EXISTING BUILDING FOUNDATION BEYOND TO REMAIN
19. 1" TINTED LOW E INSULATED GLASS IN ALUMINUM STOREFRONT SYSTEM

MARCH 12, 2010
 Schematic Design
 r+b Job #: 0209
 U.A. #: 08-8826

LABORATORY OF TREE-RING RESEARCH
BRYANT BANNISTER TREE-RING BUILDING
 University of Arizona - Tucson, Arizona

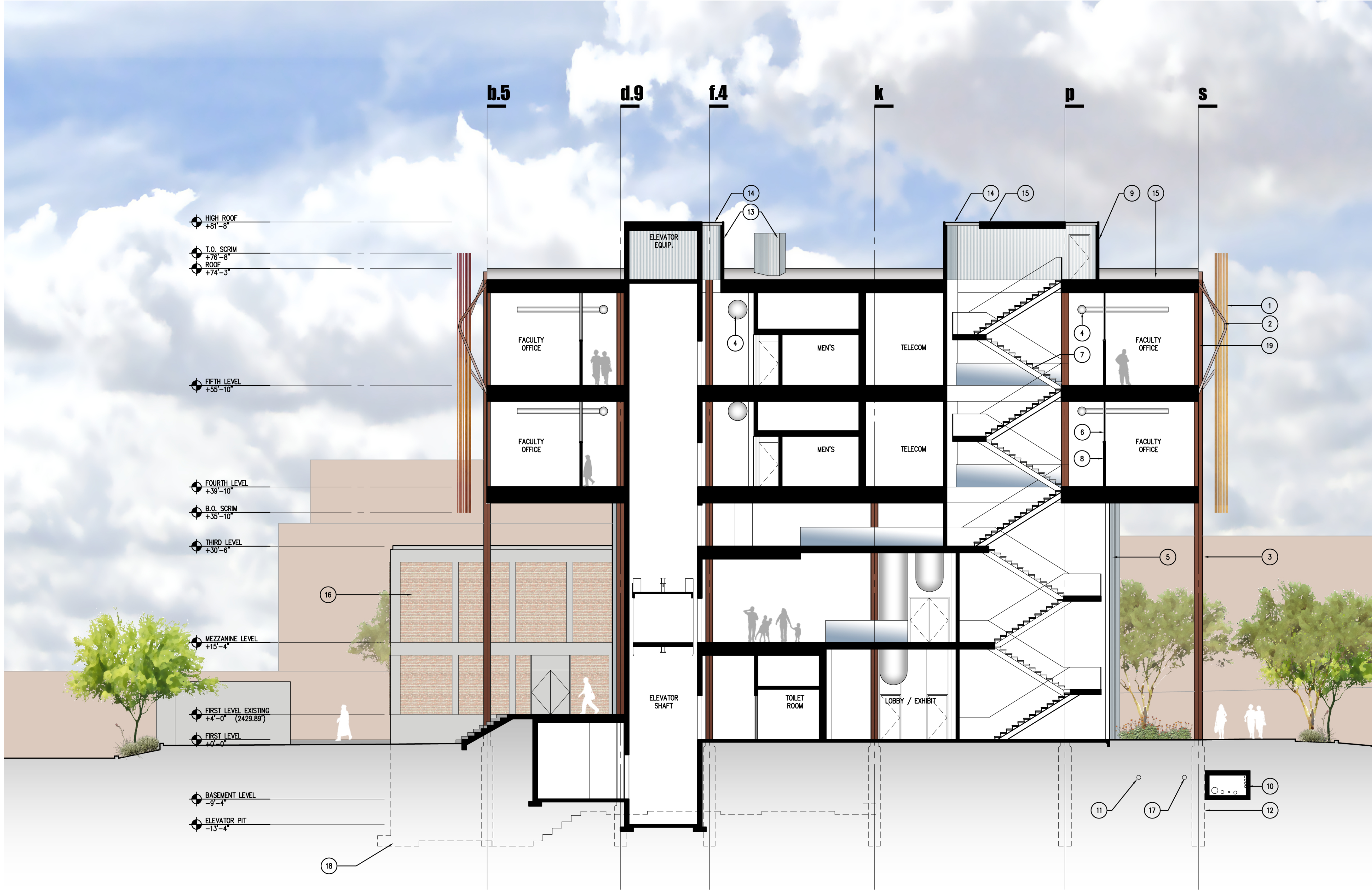
KEYPLAN



ELEVATION AND SECTION

A5.4

1" = 8'-0"



1 SECTION - LOOKING NORTH

0 2 4 8

J:\2009\1.0 - Drawings\1.2 Working Drawings\BRIEFS\0209_A5.4 - SECTION.dwg, 3/11/2010 5:48:09 PM, mbeverland

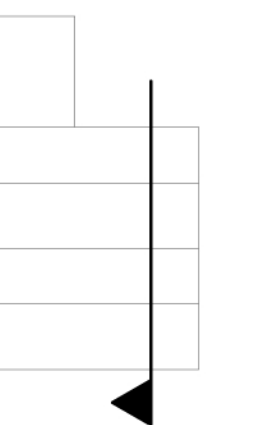
NOTES

1. PIPE SCRIM - 1" COPPER PIPE AT 4" O.C.
2. SCRIM SUPPORT STRUCTURE - 4" PAINTED STEEL PIPE ATTACHED TO STEEL BEAMS
3. STEEL COLUMN - PAINTED
4. DUCTWORK
5. BUILDING FOUNDATION - SEE STRUCTURAL
6. CLERESTORY GLASS
7. EXIT ACCESS STAIR
8. PARTITION WALL
9. TRANSLUCENT STAIR ENCLOSURE - 1/4" FIBERGLASS PANEL ON INTERIOR AND EXTERIOR SURFACE OVER BACK TO BACK PERFORATED 3" GALVANIZED METAL DECK
10. TRANSLUCENT SKYLIGHT ENCLOSURE - 1/4" FIBERGLASS PANEL ON INTERIOR AND EXTERIOR SURFACE OVER BACK TO BACK PERFORATED 3" GALVANIZED METAL DECK
11. BUILT-UP MODIFIED BITUMEN ROOFING
12. EXISTING UTILITY TUNNEL TO REMAIN
13. EXISTING BUILDING BEYOND TO REMAIN
14. EXISTING BUILDING FOUNDATION TO REMAIN
15. SUSPENDED 24" TALL 3/8" MDF (STAINED) BAFFLE
16. SUSPENDED FABRIC BAFFLE
17. 1" TINTED LOW E INSULATED GLASS IN ALUMINUM STOREFRONT SYSTEM
18. FIRE SHUTTER
19. HORIZONTAL STEEL SUPPORT MEMBER FOR ALUMINUM STOREFRONT SYSTEM - PAINTED
20. TRANSLUCENT EXHAUST FAN ENCLOSURE - 1/4" FIBERGLASS PANEL ON INTERIOR AND EXTERIOR SURFACE OVER BACK TO BACK PERFORATED 3" GALVANIZED METAL DECK

MARCH 12, 2010
 Schematic Design
 r+b Job #: 0209
 U.A. #: 08-8826

LABORATORY OF TREE-RING RESEARCH
BRYANT BANNISTER TREE-RING BUILDING
 University of Arizona - Tucson, Arizona

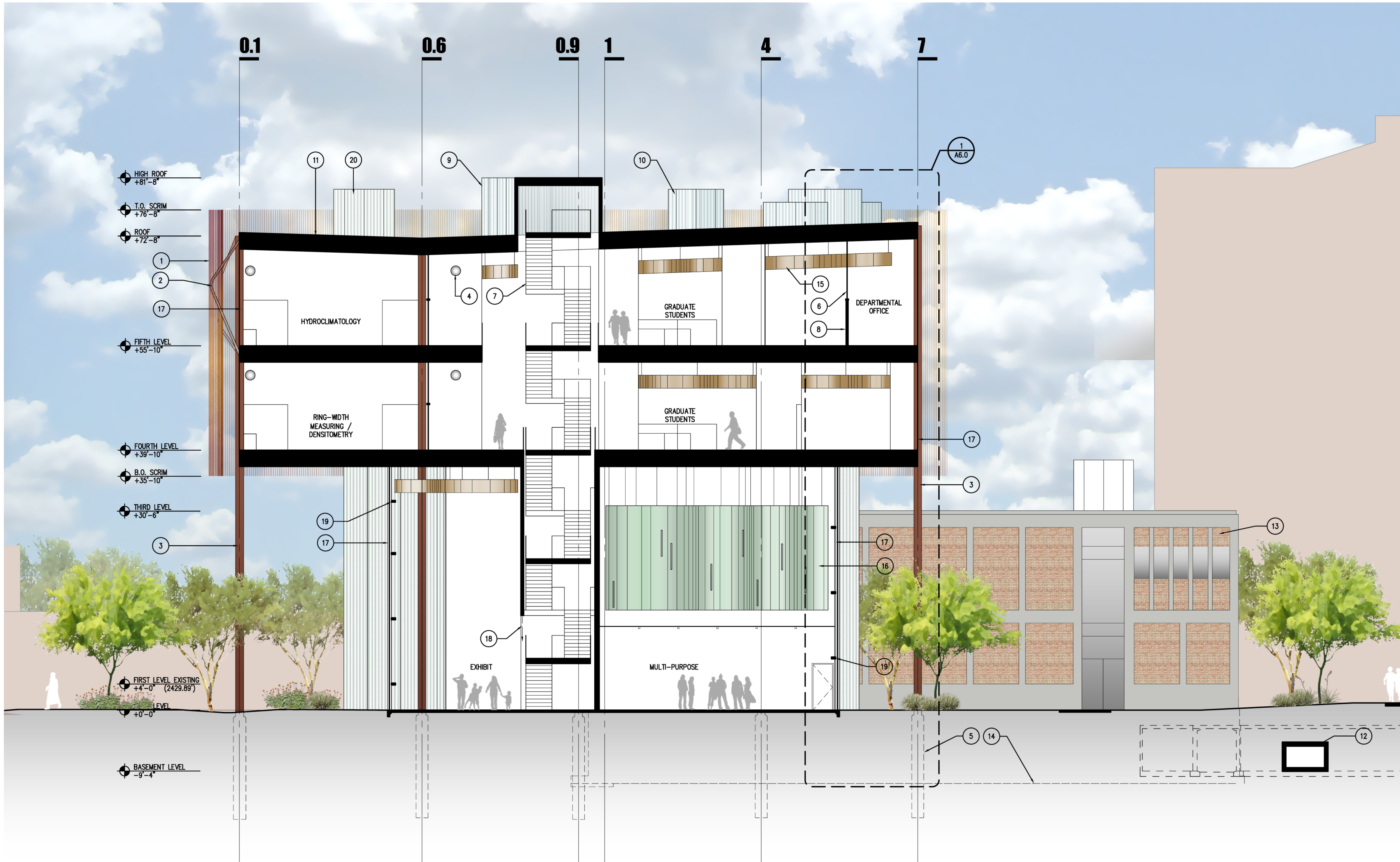
KEYPLAN



ELEVATION AND SECTION

A5.5

1" = 8'-0"



1 SECTION - LOOKING WEST

0 2 4 8

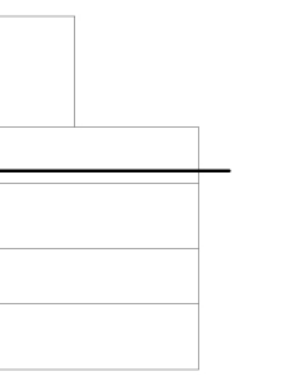
NOTES

1. PIPE SCRIM - 1" COPPER PIPE AT 4" O.C.
2. SCRIM SUPPORT STRUCTURE - 4" PAINTED STEEL PIPE ATTACHED TO STEEL BEAMS
3. STEEL COLUMN - PAINTED
4. DUCTWORK
5. TRANSLUCENT WALL - 1/4" FIBERGLASS PANEL ON INTERIOR AND EXTERIOR SURFACE OVER BACK TO BACK PERFORATED 3" GALVANIZED METAL DECK
6. CLERESTORY GLASS
7. EXIT ACCESS STAIR
8. PARTITION WALL
9. TRANSLUCENT STAIR ENCLOSURE - 1/4" FIBERGLASS PANEL ON INTERIOR AND EXTERIOR SURFACE OVER BACK TO BACK PERFORATED 3" GALVANIZED METAL DECK
10. EXISTING UTILITY TUNNEL TO REMAIN
11. EXISTING GAS LINE TO REMAIN
12. BUILDING FOUNDATION - SEE STRUCTURAL
13. TRANSLUCENT SKYLIGHT ENCLOSURE - 1/4" FIBERGLASS PANEL ON INTERIOR AND EXTERIOR SURFACE OVER BACK TO BACK PERFORATED 3" GALVANIZED METAL DECK
14. 1" INSULATED LOW E GLASS IN ALUMINUM SKYLIGHT SYSTEM
15. BUILT-UP MODIFIED BITUMEN ROOFING
16. EXISTING BUILDING TO REMAIN
17. EXISTING WATER LINE TO REMAIN
18. EXISTING BUILDING FOUNDATION TO REMAIN
19. 1" TINTED LOW E INSULATED GLASS IN ALUMINUM STOREFRONT SYSTEM
20. SUSPENDED FABRIC BAFFLE
21. SUSPENDED 24" TALL 3/8" MDF (STAINED) BAFFLE
22. TRANSLUCENT ELEVATOR EQUIPMENT ENCLOSURE - 1/4" FIBERGLASS PANEL ON INTERIOR AND EXTERIOR SURFACE OVER BACK TO BACK PERFORATED 3" GALVANIZED METAL DECK

MARCH 12, 2010
 Schematic Design
 r+b job #: 0209
 UA #: 08-8826

LABORATORY OF TREE-RING RESEARCH
BRYANT BANNISTER TREE-RING BUILDING
 University of Arizona - Tucson, Arizona

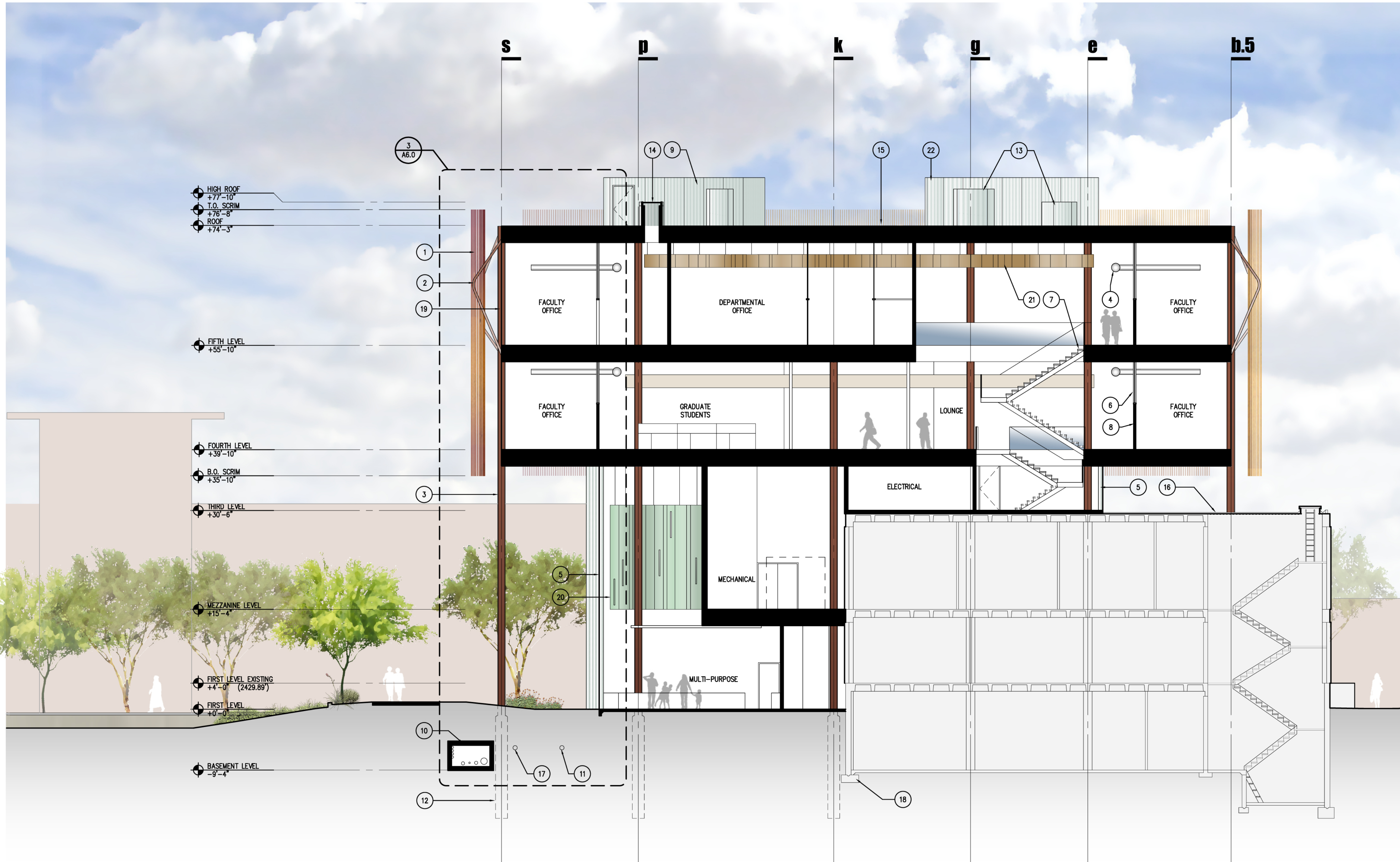
KEYPLAN



ELEVATION AND SECTION

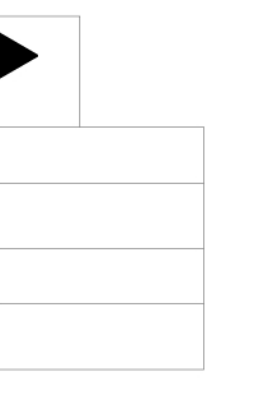
A5.6

1" = 8'-0"



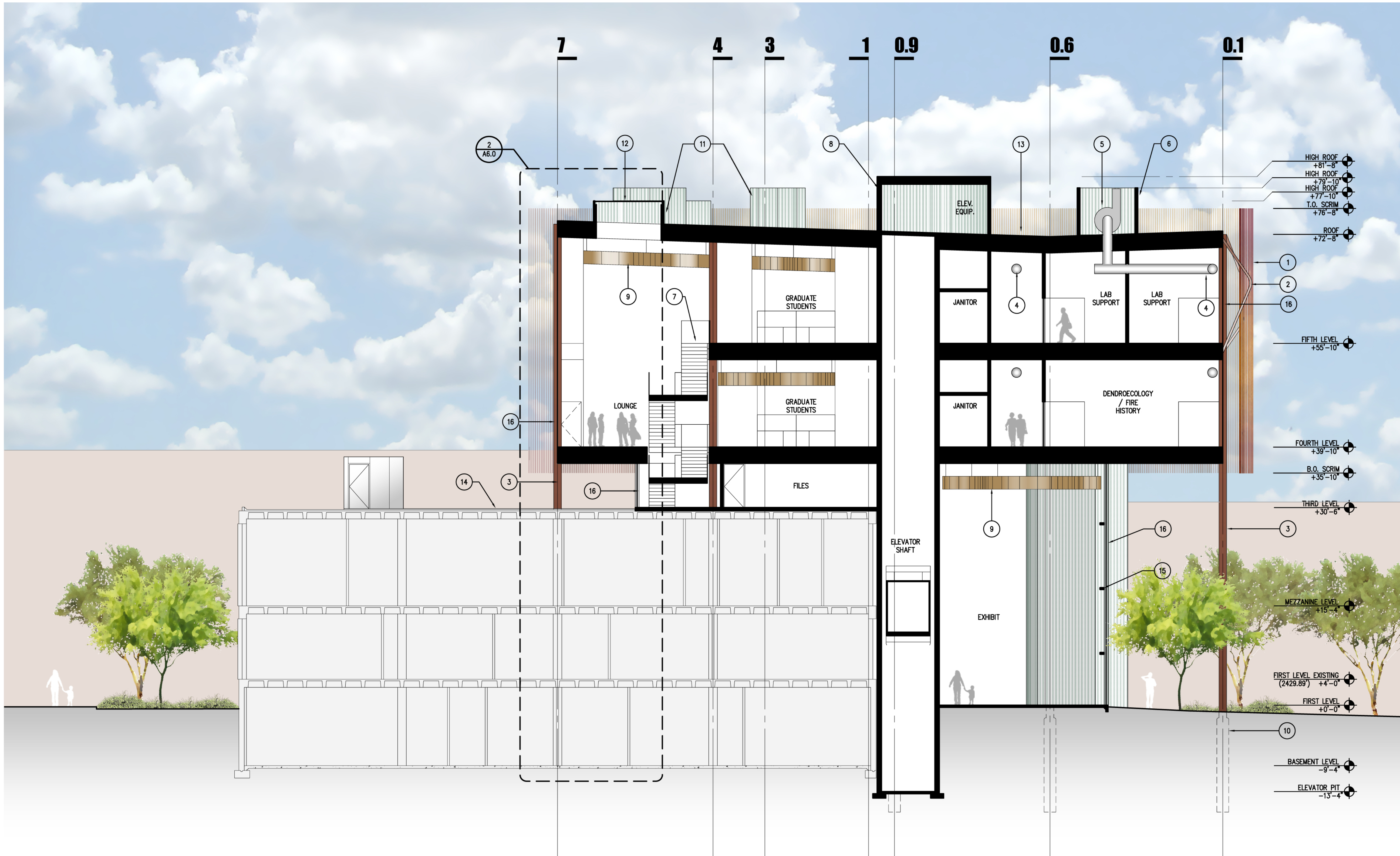
1 SECTION - LOOKING SOUTH

0 2 4 8



NOTES

1. PIPE SCRIM - 1" COPPER PIPE AT 4" O.C.
2. SCRIM SUPPORT STRUCTURE - 4" PAINTED STEEL PIPE ATTACHED TO STEEL BEAMS
3. STEEL COLUMN - PAINTED
4. DUCTWORK
5. EXHAUST FAN - SEE MECHANICAL
6. TRANSLUCENT EXHAUST FAN ENCLOSURE - 1/4" FIBERGLASS PANEL ON INTERIOR AND EXTERIOR SURFACE OVER BACK TO BACK PERFORATED 3" GALVANIZED METAL DECK
7. EXIT ACCESS STAIR
8. TRANSLUCENT ELEVATOR EQUIPMENT ENCLOSURE - 1/4" FIBERGLASS PANEL ON INTERIOR AND EXTERIOR SURFACE OVER BACK TO BACK PERFORATED 3" GALVANIZED METAL DECK
9. SUSPENDED 24" TALL 3/8" MDF (STAINED) BAFFLE
10. BUILDING FOUNDATION - SEE STRUCTURAL
11. TRANSLUCENT SKYLIGHT ENCLOSURE - 1/4" FIBERGLASS PANEL ON INTERIOR AND EXTERIOR SURFACE OVER BACK TO BACK PERFORATED 3" GALVANIZED METAL DECK
12. 1" INSULATED LOW E GLASS IN ALUMINUM SKYLIGHT SYSTEM
13. BUILT-UP MODIFIED BITUMEN ROOFING
14. EXISTING BUILDING TO REMAIN
15. HORIZONTAL STEEL SUPPORT MEMBER FOR ALUMINUM STOREFRONT SYSTEM - PAINTED
16. 1" TINTED LOW E INSULATED GLASS IN ALUMINUM STOREFRONT SYSTEM



1 SECTION - LOOKING EAST

0 2 4 8

J:\2009\1.0 - Drawings\1.2 Working Drawings (BRIEFS)\0209_A5.7 - SECTION.dwg, 3/11/2010 9:57:03 PM, mbeverland