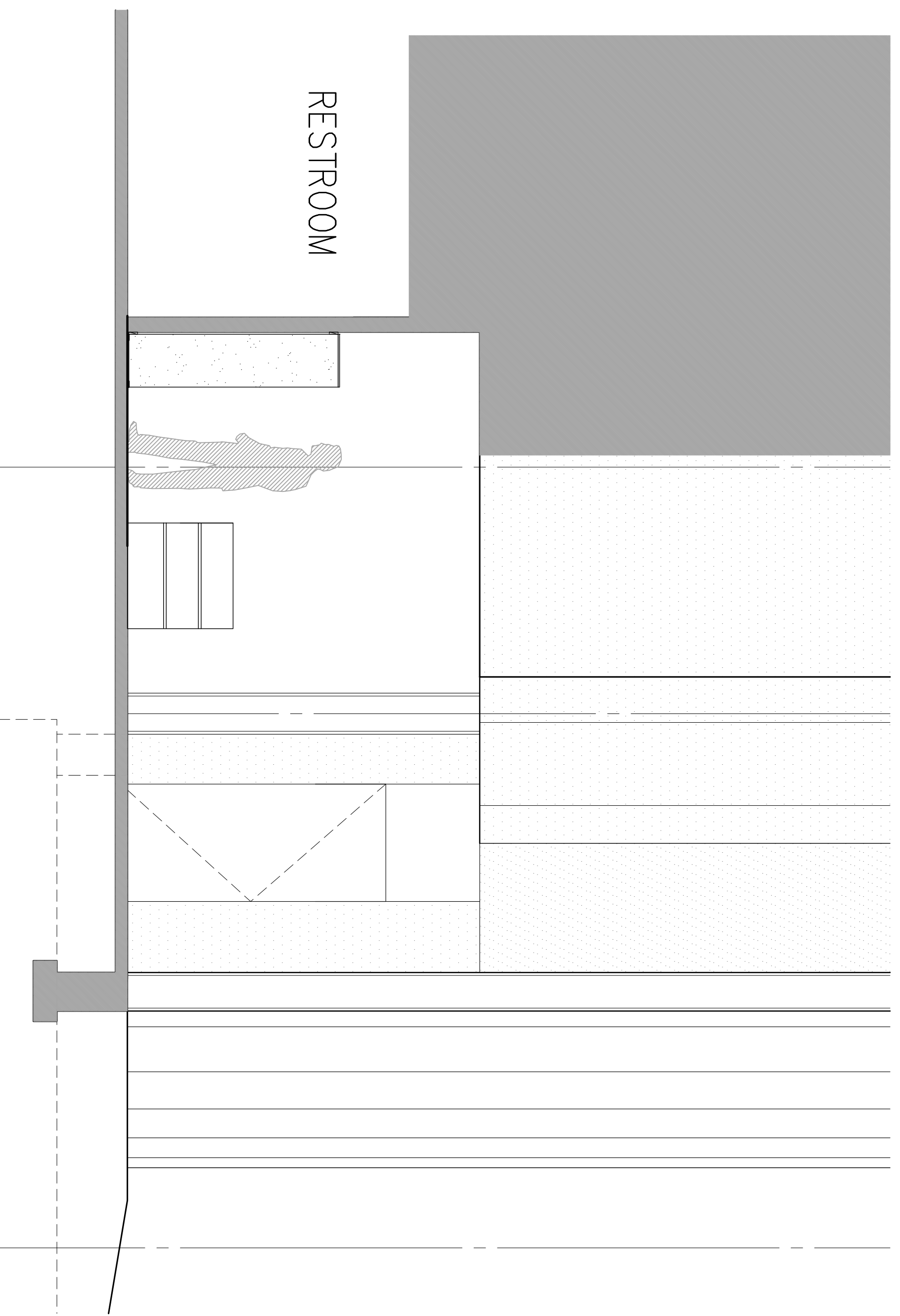
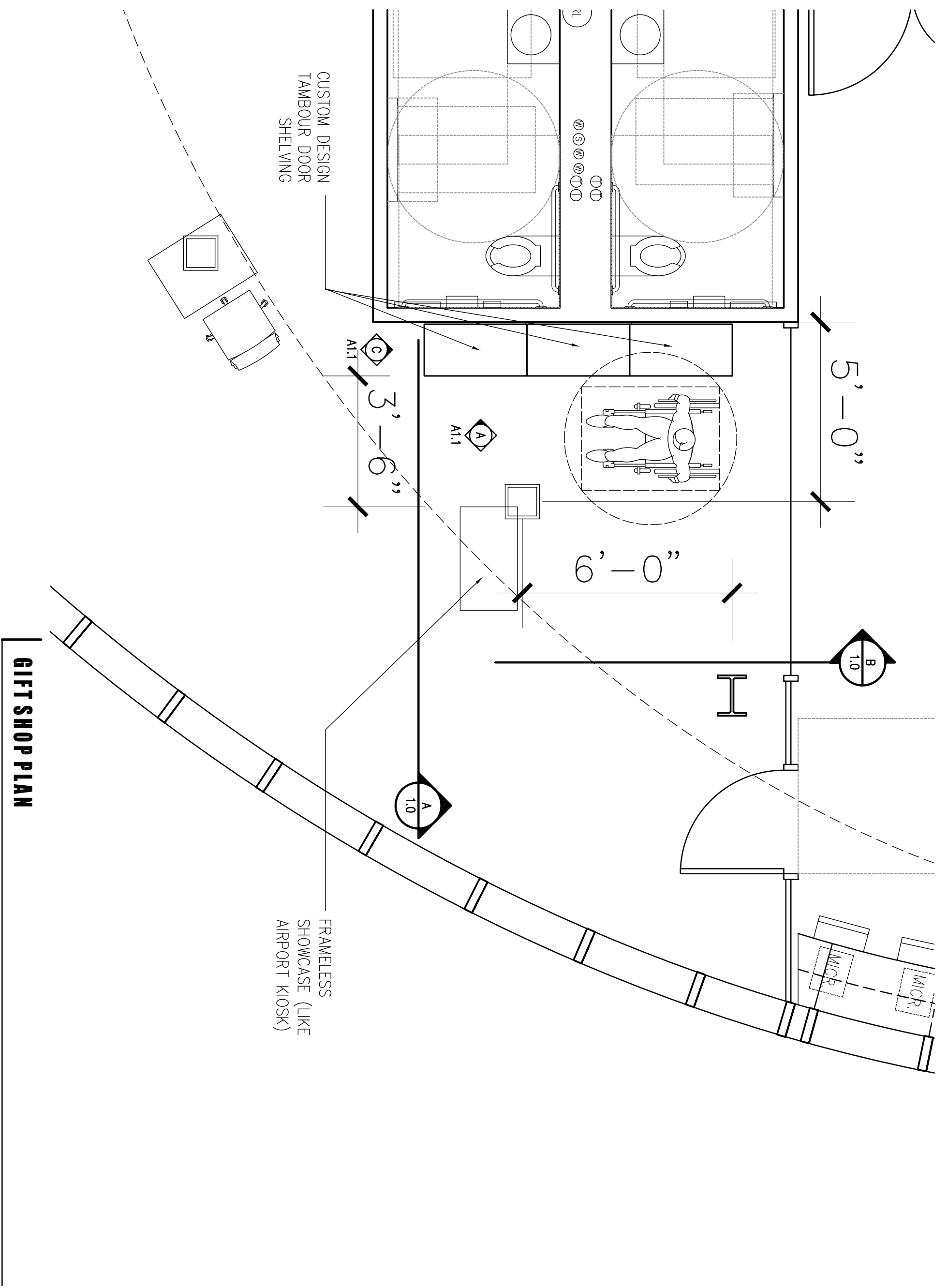


SECTION B



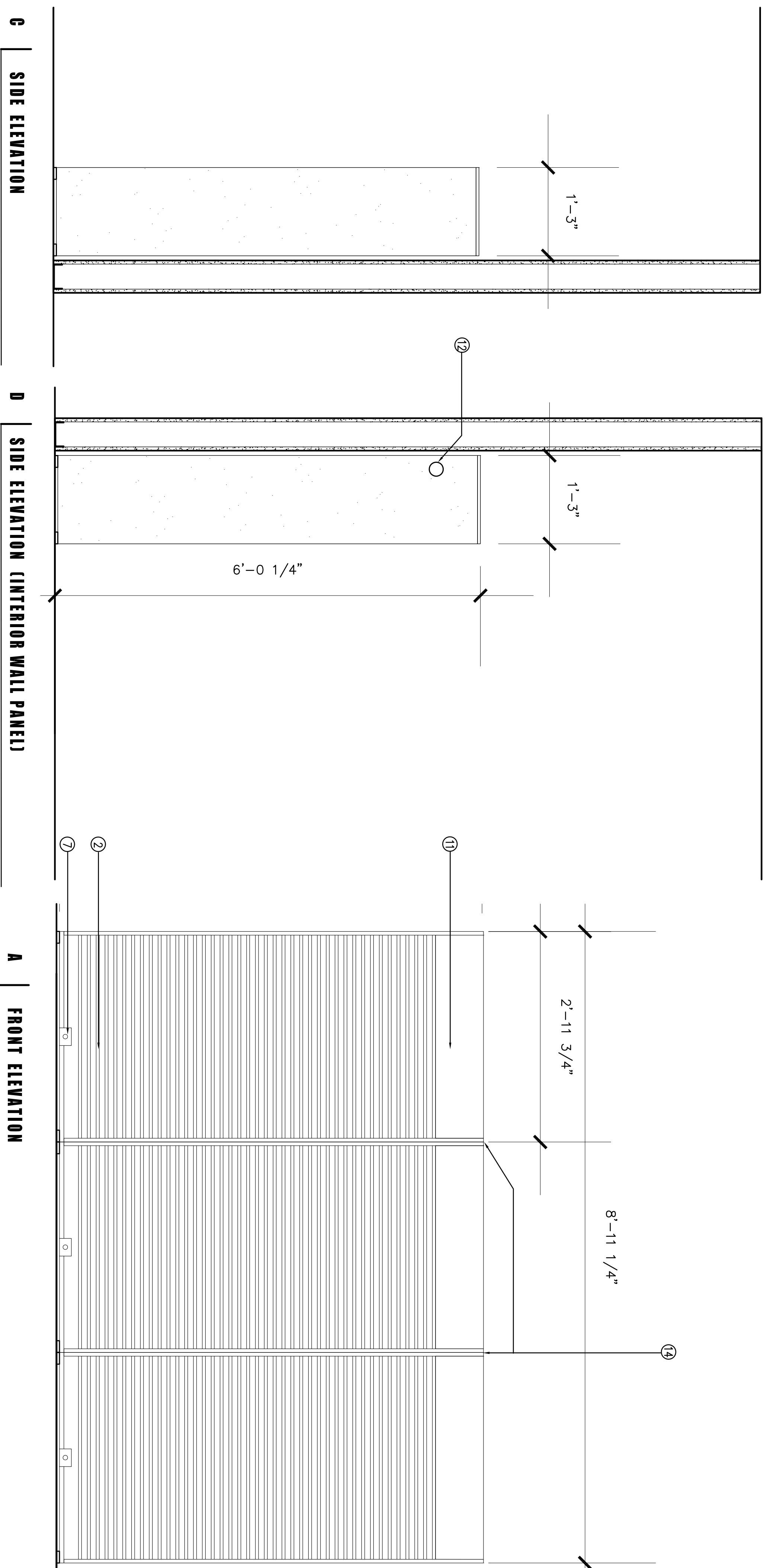
SECTION A



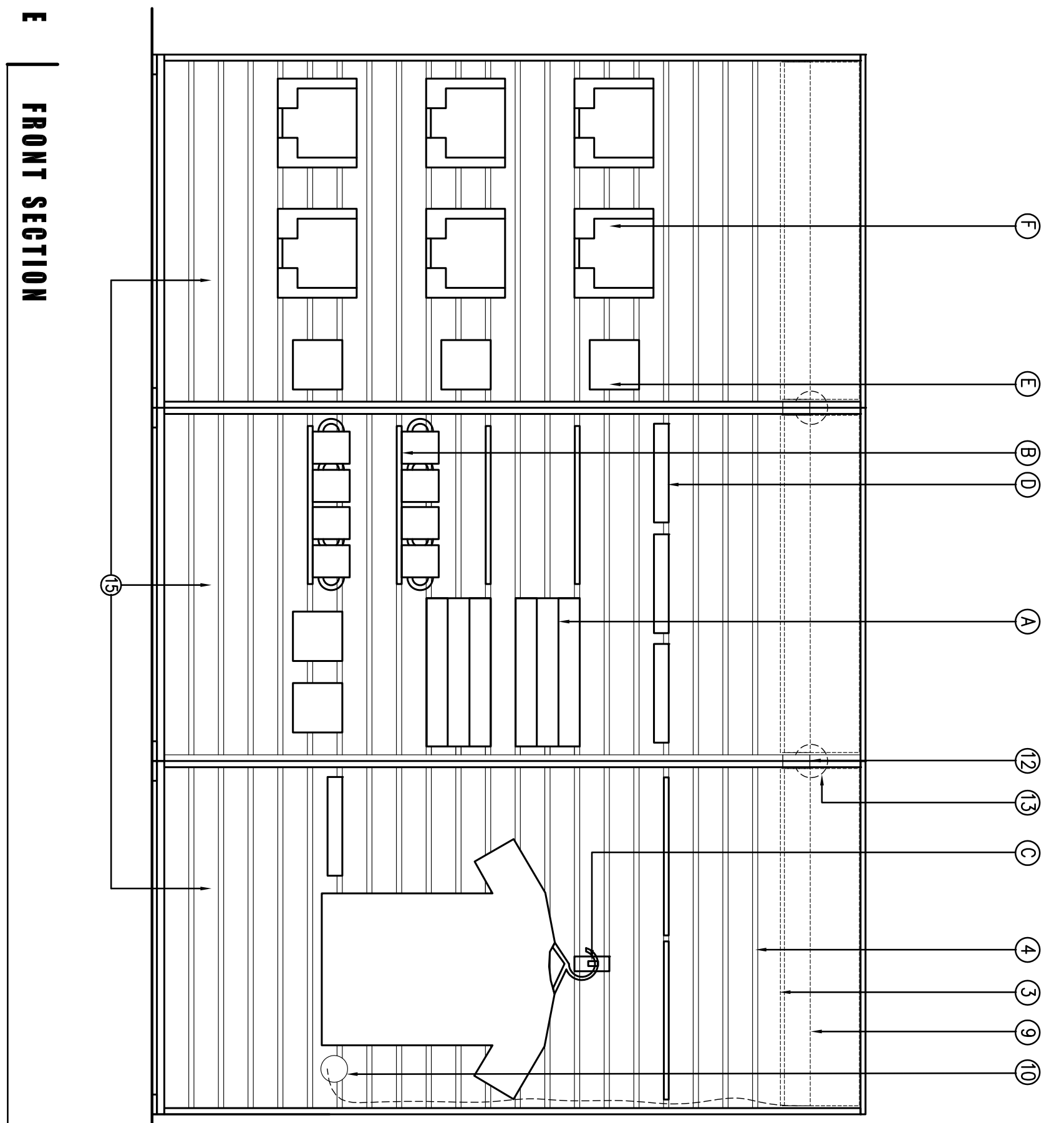
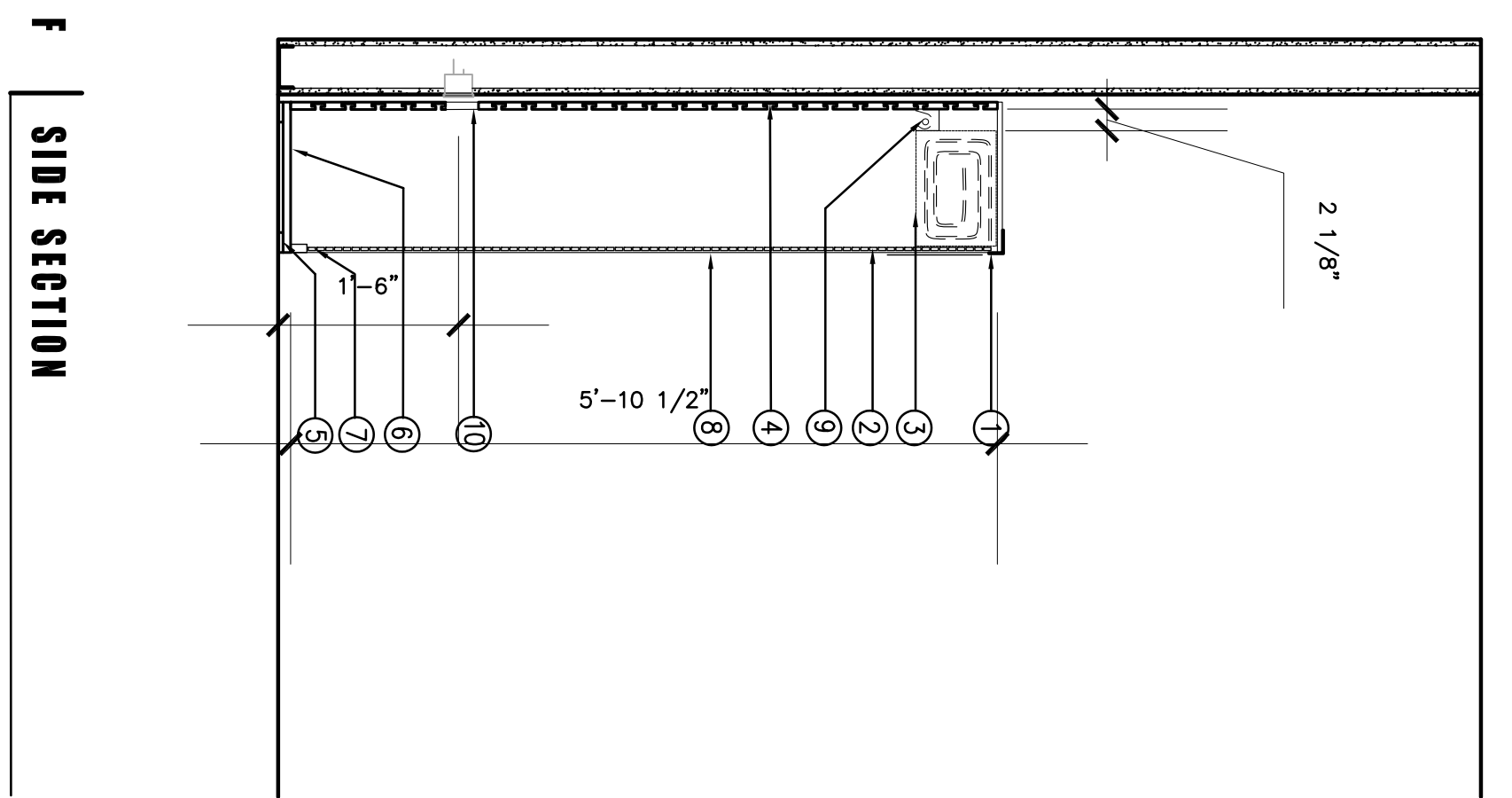
GIFT SHOP PLAN

DESCRIPTIVE NOTES

- *ALL ACCESSORIES ARE FROM EDGES HANG UP DISPLAY @ EDGES.COM
- 1. TAMBOUR DOOR PROFILE COVER (INCL. IN DOOR KIT)
- 2. 36" x 27" AL. LINE ALUMINUM TAMBOUR DOOR W/ 4" ADJUSTABLE SLIDING TRACK (ALUMINUM) STYLE: DESIGN 2 W/ C3 COUNTERBALANCE SYST. 45 TRACK COLOR: ML LINE (ALUMINUM)
- 3. ALLOTTED SPACE FOR DOOR STORAGE (REQUIRED BY MANUF.)
- 4. 34.5" x 70.5" x 3/4" SLATWALL W/ GROOMETS AT 3" O.C. @ 15" SPACING (ALUMINUM) COLOR: WHITE MELAMINE
- 5. ADJUSTABLE GLIDE
- 6. 5/8" (MINIMUM) MDF BRIGHT WHITE LAMINATE STYLE: WHITE COLOR: BRITE WHITE
- 7. TAMBOUR DOOR LOCK (INCL. IN DOOR KIT) ROUTING AND BACKING REQ'D
- 8. TAMBOUR DOOR SLIDING TRACK (INCL. IN DOOR KIT)
- 9. CABINET DISPLAY LIGHT MFR: BARCO OR EQUAL STYLE: DISPLAY REMOTE BALLAST 1 MODEL: BR1287
- 10. GROMMET HOLE TO FEEL ELECTRICAL WIRE
- 11. SIGNAGE - BY OTHERS
- 12. GROMMET ON INTERIOR SIDE WALLS FOR DASY CHAIN LIGHTS
- 13. DASY CHAIN DISPLAY CABINET LIGHTS
- 14. UNITS GANGED TOGETHER WITH CONCEALED BRACKETS
- 15. SPACE FOR EXTRA STORAGE



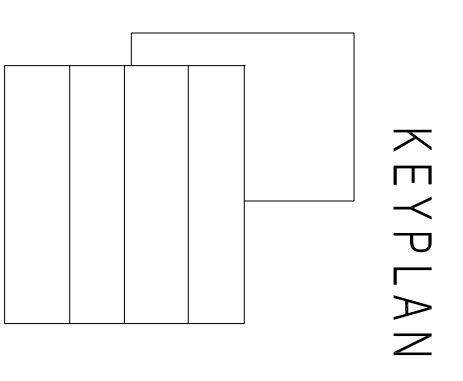
SLATWALL ACCESSORY LIST* (STORE INFORMATION IN DESCRIPTIVE NOTES)					
ITEM NO.	ITEM DESCRIPTION	QTY	DIMENSION	WEBSITE ITEM NO.	REMARKS
A	ACRYLIC SHELF DISPENSER	2	15"W x 6.5"H x 7.5"D	177310	USED FOR COASTERS, BOOKS, GIFT CARDS
B	BRACED DISPLAY SHELF	6	16"W x 10"D	177055	USED FOR WUGS.
C	T-SHIRT RECTANGULAR TUBING	1	12"	172002	T-SHIRT DISPLAY. COLOR: CHROME
D	MESSAGE SHELF	4	10"W x 4"D	177051	USED FOR GIFT CARDS / PHOTOGRAPHY.
E	ACRYLIC SQUARE BINS	5	5"W x 5"H x 5"D	177304	PENCIL HOLDER
F	PICTURE / BOOK HOLDER	6	11"D	177105-7	PICTURE / BOOK HOLDER



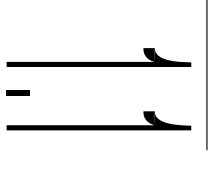
1545 W. THOMAS ROAD
PHOENIX, ARIZONA 85015
PH: 602.264.1955
FAX: 602.264.9234

AUGUST 26, 2011
Construction Documents
r+b Job #: 0209
U.A. #: 08-9826

LABORATORY OF TREE-RING RESEARCH
BRYANT BANNISTER TREE-RING BUILDING
The University of Arizona - Tucson, Arizona



GIFT SHOP FURNITURE
PROPOSAL



05/25/12

1"=10'