

Tentative Schedule & Itinerary for Summer Tree-Ring Fieldwork, Jemez Mountains, 2012

May 23, Wednesday: Tom & Suzanne drive from Tucson to Jemez Mountains. We will use my 4-WD Tundra truck, E2 pop-up camper, and doggies; We probably will head straight to Monument Canyon RNA, or other location where Don Falk & crew may already be camping (or in Valles Caldera National Preserve [VCNP]?).

May 24 - 26, Thursday through Saturday: We will be scouting potential collection sites, and checking in with Jemez RD and VCNP personnel, Craig Allen, Bandelier. Probably looking at collections sites at: Banco Bonito forest thinning/field house/terrace sites; Wabakwa ruin site; Redondo shrub field remnant wood site scouting.

May 27, Sunday: Go to Jemez Springs, VCNP Science & Education Center, set up pop-up camper there, rest, groceries, etc.

May 28 to June 4, Monday to Monday: North American Dendroecology Fieldweek at VCNP Sci & Ed Center; Tom is co-teaching with Peter Brown during this week.

June 4, Monday [or alternatively June 2 or 3, Saturday-Sunday]: LTRR fire history crew drives from Tucson, set up camp at Monument Canyon or other location TBD. This crew: Chris Baisan, Josh Farella, Chris Guiterman (?); Erica Bigio (?); one or two additional field assistants. (Guiterman only 1 week?)

June 5 - June 8, Tuesday to Friday: Fire history sampling with crew at Banco Bonito, Wabakwa, or other. During this week, or other work weeks below, try to coordinate to visit in the field during part of some days with Chris Roos and his crew on his fire history/stratigraphy work, Matt Liebmann and crew on surface ceramic survey work, and Rachel Loehman and crew on forest structure sampling for modeling. Also need to coordinate with Sara Chavarria on days that teacher trainees will join us in the field (for one to several days?).

June 9 - 10, Saturday, Sunday: Meet with Fire & Humans in Resilient Ecosystems (FHiRE), NSF project colleagues and archaeological crews at VCNP Sci & Ed Center, or other location (rental house that archaeologists will have?) for coordinating meeting, informal talks, socializing, showers, R&R, groceries, beer, etc.

June 11 - 15, Monday to Friday: Return to mesas on east side, i.e., Monument Canyon or Wabakwa camp areas, or Banco Bonito and continue searching/collecting in these areas.

June 16 Saturday [or 15 Friday]: Most of LTRR crew heads back to Tucson, with collections. Josh Farella, Tom & Suzanne, and probably one other student assistant remain in Jemez.

June 16-17, Saturday, Sunday: Rest days, groceries, and on Sunday or Monday move camp to somewhere on west mesas (see below).

June 17 – 18, Sunday, Monday: Set up camp, possibly at Amoxiumqua (this is the big ruin on Virgin Mesa right above Jemez Springs; we can get there via 4 WD road, (if dry and no fire closure!... I can give GPS coordinates and road map/instructions if some want to meet us there.)

June 18 – 22, Monday to Friday: Scouting and preliminary sampling on Virgin Mesa, Stable Mesa, Holiday Mesa. This will be a combination of 4WD road driving and hiking, and some chainsaw and increment core sampling. One objective here is to proceed to the far southern end of Virgin Mesa, and see a sizeable ruin down there (Hanakwa?), and possible un-logged pine stand nearby. Also, visit Kwastiyukwa, and Tovakwa. Also, need to check with archaeology crew led by Matt Liebmann and see where they plan to be.

June 23, Saturday: Drive home to Tucson

Miscellaneous Information:

Weblink for NSF proposal that funds FHiRE:

http://www.ltrr.arizona.edu/~tswetnam/MiscData/Swetnam_CNH_NSF_Proposal_2011_Abbreviated.pdf

A brief abstract describing the NSF project:

http://www.ltrr.arizona.edu/~tswetnam/MiscData/Swetnam_CNH1114898_Public_Abstract.pdf

UANews story about FHiRE project:

<http://uanews.org/node/42041>

Information on NADEF 2012:

<http://dendrolab.indstate.edu/nadef/>

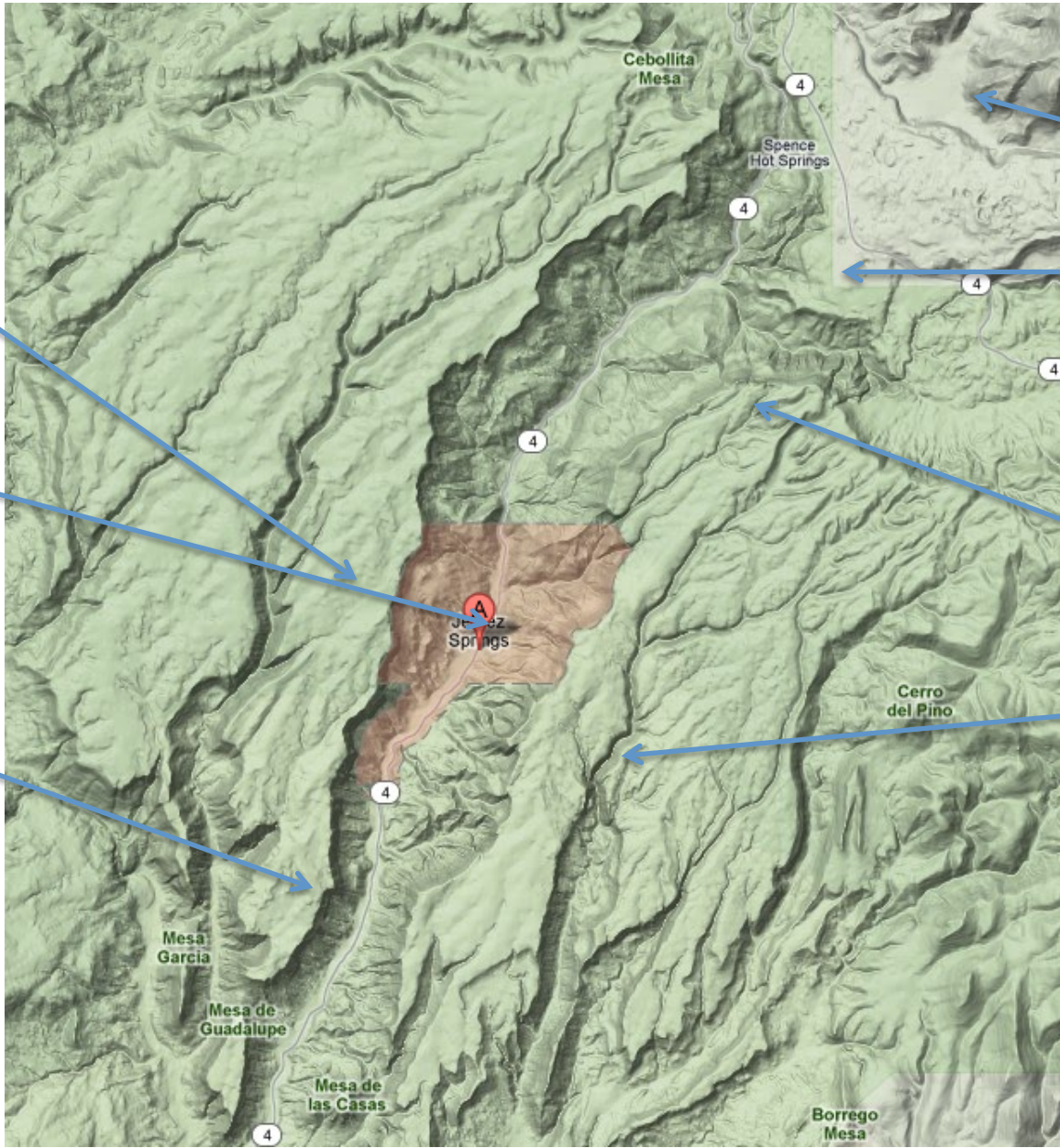
Website and pdf brochure for VCNP Science & Education Center

http://www.vallescaldera.gov/newsmedia/news/news_ScienceandEducationCenterBrochure.pdf

Tom Swetnam's cell number: 520-405-1832 tswetnam@ltrr.arizona.edu

Suzanne's cell number: 520-471-3450

[we may have intermittent phone/email coverage while camping in the mesas signal. We have battery power, generator and solar cell power for the E2 pop-up camper.]“??]



Redondo brush fields

Banco Bonito

Monument Canyon

Wabakwa

Amoxiumqua

VCNP Sci & Ed Center

Hanakwa

Cebolita Mesa

Spence Hot Springs

Cerro del Pino

Mesa Garcia

Mesa de Guadalupe

Mesa de las Casas

Borrego Mesa

Jemez Springs

4

4

4

4

4

4

4