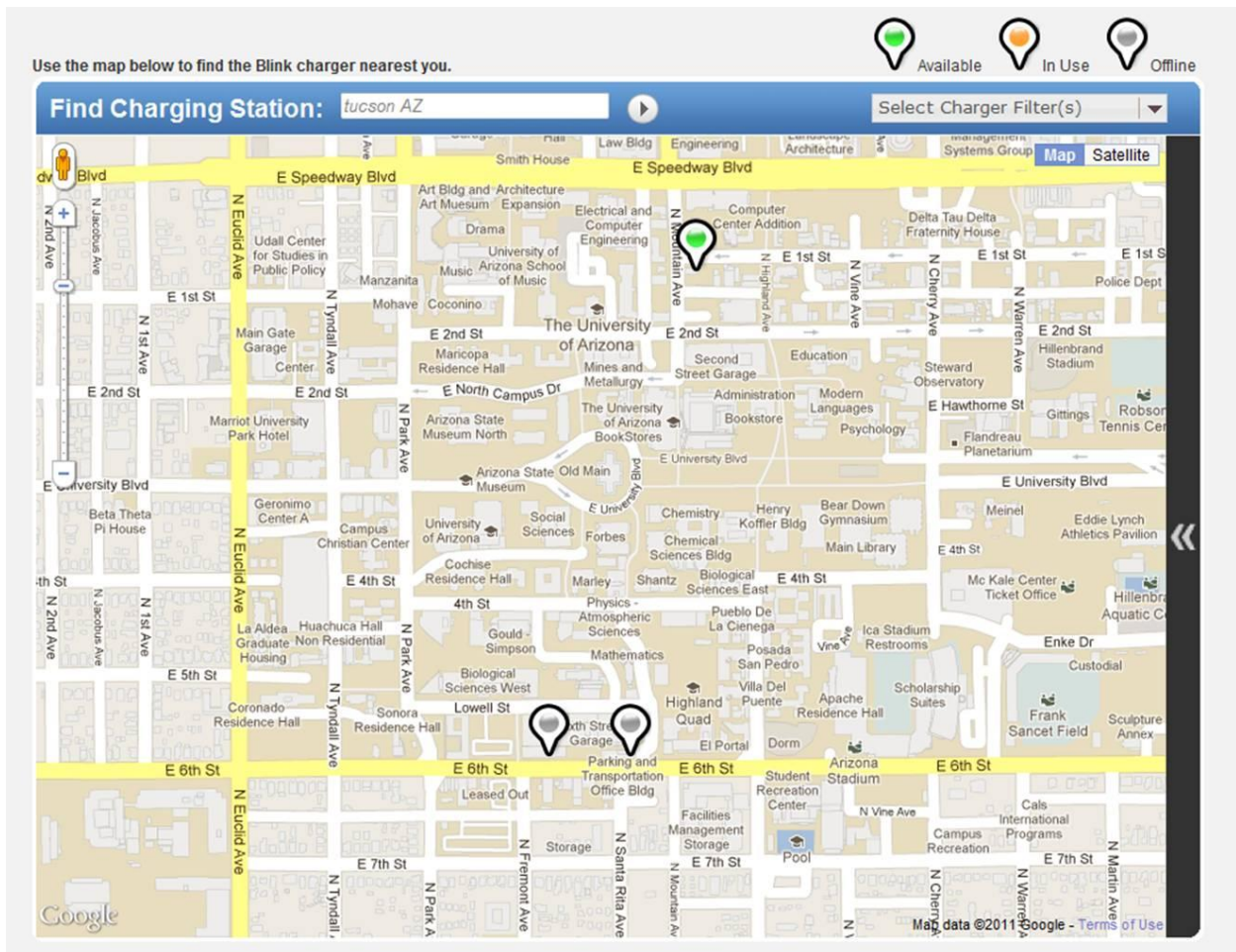


Re: the Blinks installed on the University of Arizona campus in Tucson AZ

The locations on the Blink Network Map as of 8/7/2011 are incorrect.



I have amended the UA Parking Map with information about the correct locations of the two UA Blink stations that are available for public access: one in the **Second Street Parking Garage** (mapped incorrectly on BlinkMap) and the other in the **Tyndall Ave Parking Garage** (not mapped at all on BlinkMap). There is a fee for parking in the garages during the week, but visitors have free access on Weekends & Holidays, pending special event parking restrictions as noted here: <http://parking.arizona.edu/parking/restrictions.php>

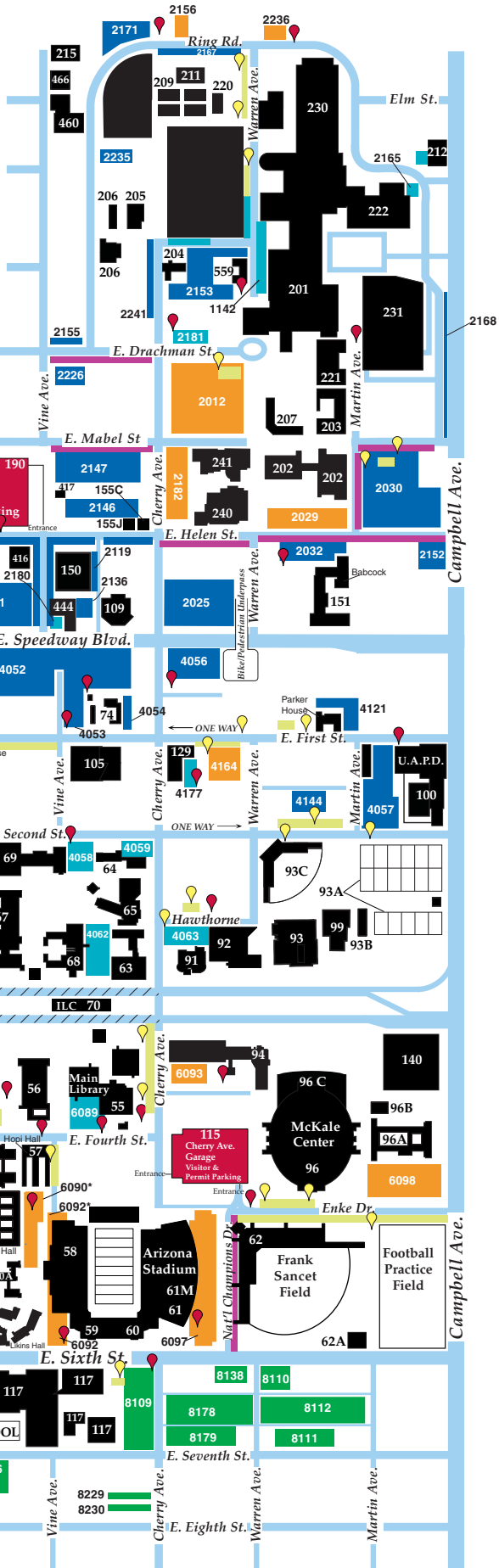
The two Blink stations mapped on BlinkMap in the Sixth Street Parking Garage may not be open to the public. The Blink is actually one station with two connections and is part of the UA EV rental fleet with reserved spots for the rental cars.

See the following for the correctly mapped public access Blink locations and additional information:

2011 - 2012 Campus Parking Map

Legend:

- EVSE's in the 2nd Street & Tyndall Ave Garages
- Permit Required ● Visitor Parking
- Zone 1*
- South of Sixth St. Lots*
- Lot Specific Permit Parking* (*Permit required till 9:00 pm)
- Misc. Lots: SV, Loading, Disabled*
- Street Specific Permit Parking*
- Parking Garages* ●
- Hourly Parking* ●
- ▨ Restricted Area
- ▨ Closed to Traffic (M-F 7:00am-4:30pm)
- ▨ Construction
- Buildings
- Car Share Location
- Hourly Parking Pay Station
- Motorcycle Parking*



Sixth St Garage EVSE is part of UA Rental Fleet - may not have public access.



Download the Campus Parking Map to your Smartphone



Following is the rundown on the three locations mapped on the Blink Network map. The two charging stations that are designated for "Public Use" are The **Second Street Parking Garage** and the **Tyndall Avenue Parking Garage**. I recently drove by to check out the Blinks and I also snapped some photos of each. The Second St. Garage Blink appeared to be working, but the Tyndall Ave Blink is offline. (I don't have my Leaf yet, so I couldn't try them out!)

Second Street Garage Blink

(This is the one incorrectly mapped as being located on 1st Street on the Blink Network Map).

The Second Street garage is just to the north of the UA Student Union -- it is entered via 2nd St which is a one way street going east (access it by going south down Mountain from Speedway and turning left on Second. The Blink EVSE and parking space is almost directly across from the Second Street entrance. It's the first parking spot -- and it was open!



Tyndall Avenue Garage Blink

(This one is not even mapped on the Blink Network Map)

The Tyndall Ave garage is on the west side of campus. The Blink there is offline at the moment, but should be back up soon. (Apparently they are waiting for a part to fix the wireless communication unit). The Blink is on the Tyndall Ave side of the garage, near the Tyndall entrance. The EVSE and parking space is at the left end of the parking spaces opposite you as you enter via the Tyndall Ave entrance. (Note: this garage can ALSO be entered directly from Euclid Ave by turning into the gate off of Euclid at 4th street.)



Sixth Street Garage Blink

(The Blink Network Map indicates that two offline Blinks are located in this garage.)

This garage actually has one Blink EVSE station with the capability of plugging in two EVs in two adjacent parking spaces. (The EVSE is located just to the left of the east entrance to the garage.) However, I was told that this EVSE station is part of the Hertz Connect campus rental program and that the UA's Hertz Connect Leaf has a reserved parking spot there.

See: <http://www.hertzdemand.com/UniversityofArizona>. Although the other parking spot has been open this summer, when the UA EV Rental Fleet expands this August, I was told that both spots will be reserved for the EV Rental fleet. So it appears that this location may NOT be open for charging by the general public (no photo of this one).