



FIRESTAT User's Guide

version 5.4

United States
Department of
Agriculture



Forest Service

Fire & Aviation
Management
November, 2003



Preface

Welcome to the *FIRESTAT User's Guide*. This guide is designed to help you access and use FIRESTAT version 5.4.

The Contents at the front of this guide help you find topics easily. Each chapter explains specific topics and tasks you must know to effectively use FIRESTAT. An appendix that contains additional coding information is located in the back.

We hope you find this guide friendly and easy-to-use. If you have any questions, comments, or concerns, please contact:

USDA Forest Service
National Fire and Aviation Management Information Systems Team
3833 S. Development Avenue
Boise, ID 83705-5354
1-800-253-5559

You can email us at:

fire_help@dms.nwcg.gov

Windows 95, Windows 98, Windows 2000, and Windows NT are registered trademarks of Microsoft Corporation. This guide employs many styles, conventions, and guidelines established in the "Microsoft Manual of Style for Technical Publications."

Contents

Chapter 1. About this guide	1.1
Before you begin	1.1
How to use this guide	1.1
Conventions	1.2
How to obtain a copy of this guide	1.2
Chapter 2. Getting started	2.1
What's new in FIRESTAT 5.4	2.1
<i>Introducing FIRESTAT</i>	2.2
<i>FIRESTAT access roles</i>	2.2
Navigating through the FIRESTAT system	2.4
<i>Using FIRESTAT menus</i>	2.4
Action menu	2.5
Fire Report menu	2.5
Local Limits menu	2.5
Query menu	2.6
Reports menu	2.6
Help menu	2.6
Window menu	2.7
Navigating through FIRESTAT	2.7
<i>Displaying function keys</i>	2.7
<i>Displaying the index <List></i>	2.8
<i>Searching for a specific index entry</i>	2.9
Defining and editing local limits	2.11
<i>Local Limits toolbar</i>	2.11
<i>Reporting Units form</i>	2.12
<i>State & Counties form</i>	2.14
<i>Fuel Models form</i>	2.15
<i>Fire Management Zones form</i>	2.16
<i>Principal Meridians form</i>	2.17
<i>Weather Stations form</i>	2.18
Chapter 3. Working with wildland fire reports	3.1
Creating a wildland fire report	3.1
<i>Fire Report toolbar</i>	3.2
<i>Format buttons</i>	3.2
<i>INDIVIDUAL WILDLAND FIRE REPORT - FMT1</i>	3.3
<i>INDIVIDUAL WILDLAND FIRE REPORT - FMT2</i>	3.7
<i>INDIVIDUAL WILDLAND FIRE REPORT- FMT3</i>	3.9
<i>INDIVIDUAL WILDLAND FIRE REPORT- FMT4</i>	3.11
<i>INDIVIDUAL WILDLAND FIRE REPORT- FMT5</i>	3.13
Searching for and printing fire reports	3.15
<i>Using a wildcard to perform a query</i>	3.15
<i>Printing screen captures</i>	3.16

Chapter 4. Generating and transmitting fire reports4.1

Setting up your logon ID and password4.1

DCC Password Management form4.2

Creating the fire report file4.3

Editing a transmitted fire report4.5

Correcting erroneous fire reports4.6

Transmitting fire report files to NITC4.9

Troubleshooting tips4.11

Appendix A. Codes A.1

4. State and principal meridian codes A.1

11. State postal codes A.3

17. Detection Method A.4

18-21 Statistical/General/Specific Cause/Class of People A.4

Statistical Cause A.4

General Cause A.5

Specific Cause A.5

Class of People A.6

27. Forces Used Up to Time of Attainment of Initial Strategy or Escape A.6

28. FFF Cost A.8

33. FMZ NVC per Acre (whole \$) A.8

34. Fire Intensity Level A.8

36. NFDRS Fuel Model/Cover Type A.9

NFDRS Fuel Model A.9

Cover Type A.9

41. Special Code A.10

County codes by state A.12

For State Code= 01 - Alabama A.13

For State Code = 02 - Alaska A.14

For State Code = 04 - Arizona A.14

For State Code = 05 - Arkansas A.14

For State Code = 06 - California A.16

For State Code = 08 - Colorado A.17

For State Code = 09 - Connecticut A.18

For State Code = 10 - Delaware A.18

For State Code = 11 - Washington, D.C. A.18

For State Code = 12 - Florida A.18

For State Code = 13 - Georgia A.20

For State Code = 15 - Hawaii A.23

For State Code = 16 - Idaho A.23

For State Code = 17 - Illinois A.23

For State Code = 18 - Indiana A.26

For State Code = 19 - Iowa A.28

For State Code = 20 - Kansas	A.30
For State Code = 21 - Kentucky	A.32
For State Code = 22 - Louisiana	A.33
For State Code = 23 - Maine	A.35
For State Code = 24 - Maryland	A.35
For State Code = 25 - Massachusetts	A.35
For State Code = 26 - Michigan	A.36
For State Code = 27 - Minnesota	A.38
For State Code = 28 - Mississippi	A.40
For State Code = 29 - Missouri	A.42
For State Code = 30 - Montana	A.44
For State Code = 31 - Nebraska	A.44
For State Code = 32 - Nevada	A.46
For State Code = 33 - New Hampshire	A.46
For State Code = 34 - New Jersey	A.46
For State Code = 35 - New Mexico	A.48
For State Code = 36 - New York	A.48
For State Code = 37 - North Carolina	A.50
For State Code = 38 - North Dakota	A.52
For State Code = 39 - Ohio	A.52
For State Code = 40 - Oklahoma	A.55
For State Code = 41 - Oregon	A.57
For State Code = 42 - Pennsylvania	A.57
For State Code = 44 - Rhode Island	A.58
For State Code = 45 - South Carolina	A.58
For State Code = 46 - South Dakota	A.60
For State Code = 47 - Tennessee	A.61
For State Code = 48 - Texas	A.63
For State Code = 49 - Utah	A.67
For State Code = 50 - Vermont	A.67
For State Code = 51 - Virginia	A.67
For State Code = 53 - Washington	A.70
For State Code = 54 - West Virginia	A.70
For State Code = 55 - Wisconsin	A.72
For State Code = 56 - Wyoming	A.73
Wilderness areas by Region	A.74
Region 1	A.74
Region 2	A.75
Region 3	A.77
Region 4	A.79
Region 5	A.81
Region 6	A.83
Region 8	A.87
Region 9	A.90
Region 10	A.91
Glossary	G.1

Chapter 1. About this guide

This *FIRESTAT User's Guide* shows you how to enter Individual Fire Report information using form FS-5100-29 and other sources. It is organized to help you locate and perform specific FIRESTAT functions quickly and easily.

Before you begin

Before using the FIRESTAT software, you must feel confident that:

- You are familiar with your personal computer and function keys and understand personal computer concepts.
- You are familiar with using the US Forest Service IBM hardware and software platform and can perform basic Windows 95 or Windows 2000 functions.
- You are familiar with fire reporting terminology and fire information concepts.

How to use this guide

Each chapter explains a specific functional area of the FIRESTAT system. Chapter titles are shown at the top of each page. At the beginning of each chapter you will find a chapter overview and a picture and related field descriptions of every form discussed within the chapter.

Chapter 1, "About this guide," introduces the *FIRESTAT User's Guide* and explains how to use it.

Chapter 2, "Getting started," explains some of the basic information you need to begin using FIRESTAT. It introduces access roles, basic navigation skills, and local limits.

Chapter 3, "Working with wildland fire reports," explains how to create, edit, and print wildland fire reports.

Chapter 4, "Transmitting fire reports to NIFMID," explains how to transfer fire reports to the National Interagency Fire Management Integrated Database (NIFMID). It also explains how to correct erroneous fire reports and lists troubleshooting tips.

Appendix A, "Codes," contains additional coding information you need to complete specific fields for Individual Fire Report form "FS-5100-29."

Conventions

The following conventions are used within this guide:

- Menu options and field names appear in bold, in the same case as on your screen or keyboard. Hard label keys appear in small capital letters. For example, a step in a procedure might instruct you to
 - On the **Help** menu, click **Show Keys** or press CTRL + F1.
- System responses, such as messages written to the screen, appear in the same case as displayed on your screen. For example, the following text might appear when you save a record

Enter value for : FIRE NAME
- A plus sign (+) between hard label keys, such as CTRL + F4, means to press and hold the first key, and then press the second key.
- FIRESTAT menu names, form names, and field names appear in the same case as shown on the screen. For example, a task might instruct you to

1 On the Fire Report menu, click Wildland Fire.
- Topics of special interest or hints that will help you perform a specific task show a line before and after the text. The text appears in italic type. For example

For more information about locating an existing fire report, see "Searching for fire reports in your local database" in the next section, "Viewing, searching for, and printing fire reports."

How to obtain a copy of this guide

The current version of this guide is available on the US Forest Service site on the World Wide Web. You can print the entire guide or individual chapters.

To print the current version or selected chapters of the FIRESTAT User's Guide

- 1 Log on to your Internet Service Provider.
- 2 Type www.fs.fed.us/fire/planning/nist in the Address bar, and then press ENTER.
- 3 Scroll down to the bottom of the page, and then click **Distribution**.
- 4 Click **FIRESTAT User's Guide**, then follow the instructions on your screen.

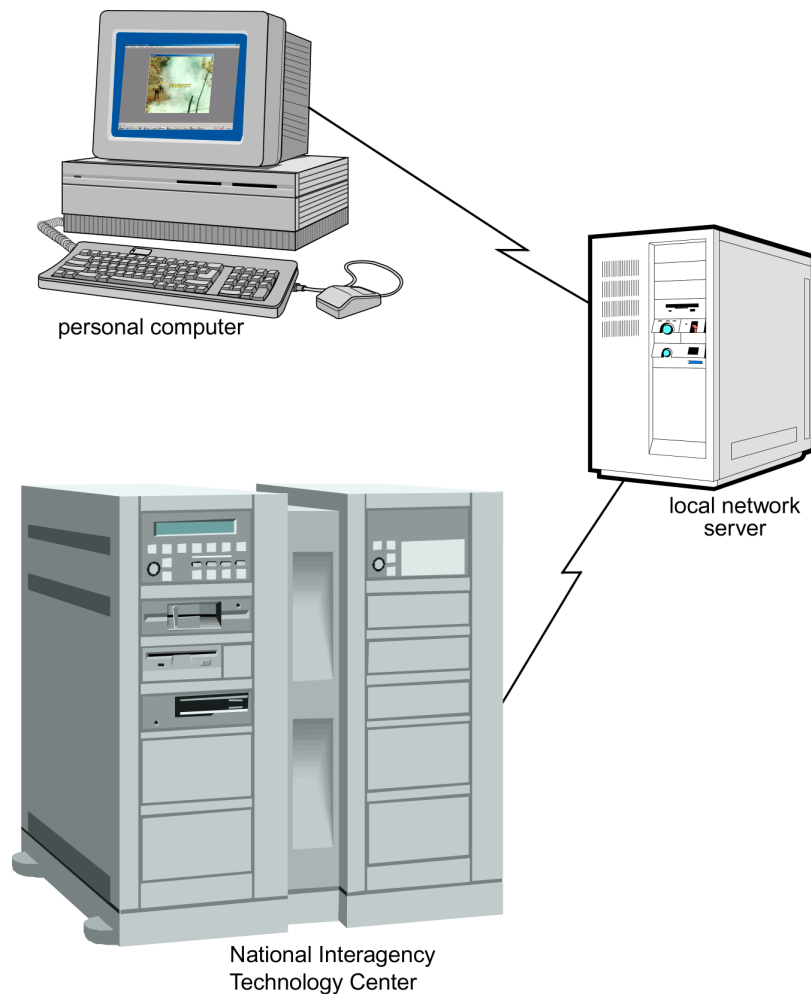
Chapter 2. Getting started

This chapter outlines some of the basic information you need to begin using FIRESTAT. Topics include:

- What's new in FIRESTAT version 5.4
- Navigating through FIRESTAT
- Defining and editing local limits.

What's new in FIRESTAT 5.4

FIRESTAT version 5.4 is a PC Client/Server software application. When you use FIRESTAT to create and save Individual Fire Reports, the information is saved in the Oracle database on your local network server. The fire reports are then loaded into the National Fire Management Integrated Database (NIFMID), the database for fire occurrence data, at the National Interagency Technology Center (NITC).



NIFMID is an Oracle[®] based relational database.

Introducing FIRESTAT

FIRESTAT allows you to electronically store the required data on the Individual Fire Report, form FS-5100-29. Once this data is stored in NIFMID, you can use the reports at NITC to prepare fire activity summaries to meet local, Regional, and National reporting requirements.

Using this information, individual Districts, Forests, Regions, and managers at the National level can plan and administer fire management activities, monitor and report program performance, and analyze operational fire activities.

FIRESTAT verifies data and compares it against your local limits during the data entry process and when the transfer file is created. When you send the transfer file to NITC, FIRESTAT verifies the data against valid codes and value ranges stored in NIFMID.

You can customize the error checking ability at your site and greatly improve the quality of your stored data. For more information, see "Creating and editing local limits," later in this chapter.

To obtain user support

- Contact your local Regional support group. To locate this group, check with your supervisor and/or computer specialist.

Your Regional support group may also contact the FIRESTAT support staff at 1-800-253-5559 or email us at:

fire_help@dms.nwcg.gov

FIRESTAT access roles

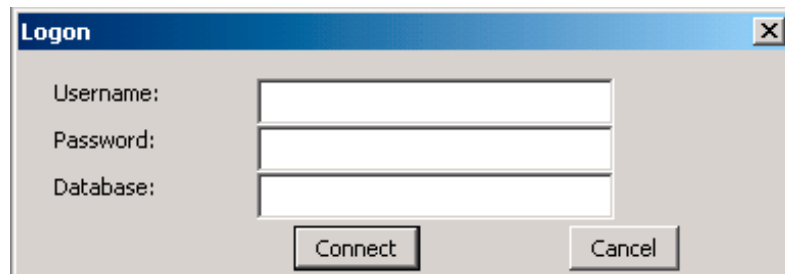
You have one FIRESTAT access role assigned to your Oracle user ID. An access role allows you to see and perform specific FIRESTAT functions on the FIRESTAT menu. These four access roles include:

- **Administrator.** Access to all FIRESTAT menus.
- **Manager.** Access to all FIRESTAT menus except Role Administration on the Action menu.
- **Data Entry.** Access to all FIRESTAT menus except Role Administration on the Action menu, the Local Limits menu, and the Generate/Transfer File menu.
- **Reports.** Access to the Query menu, the Reports menu, and Change Password on the Action menu.

To start FIRESTAT 5.3

- 1 On the **Start** menu, click **Programs**, point to **F&AM Applications**, and then click **FIRESTAT**.
- 2 In the **Logon** dialog box, type your **Username**, your **Password**, and **Database** name, and then click **Connect** or press ENTER.

The following diagram shows the Logon dialog box that displays when you first log on to FIRESTAT.



Your Username, Password, and Database name are case-sensitive. Be sure to enter this information using the appropriate uppercase and lowercase letters.

If you are having trouble logging on or do not know your Username, Password, or Database name, contact your local Regional support group.

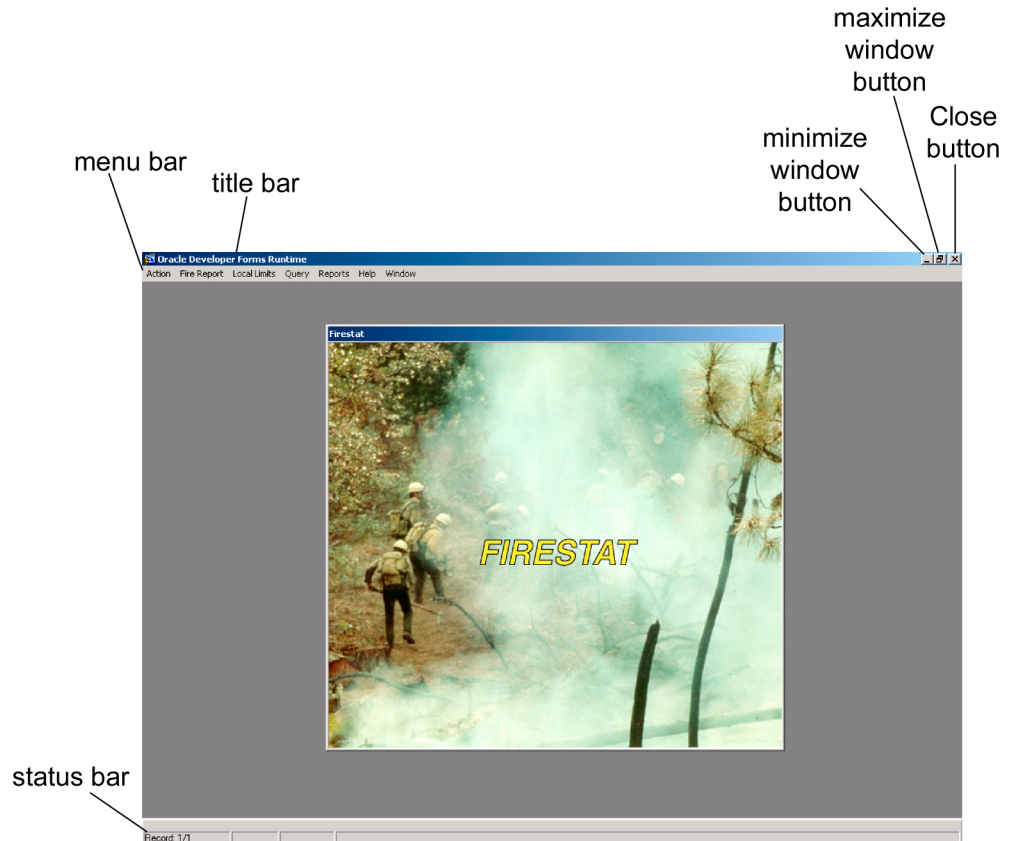
To log off FIRESTAT

- Press CTRL + q until you log off.

*You can also click **Exit** on the **File** menu until the FIRESTAT initial screen displays, and then click **Exit** on the **File** menu again to exit the FIRESTAT program.*

Navigating through the FIRESTAT system

The following diagram outlines some of the elements as they appear on the FIRESTAT initial screen. These terms will be used throughout this *FIRESTAT User's Guide*.



Using FIRESTAT menus

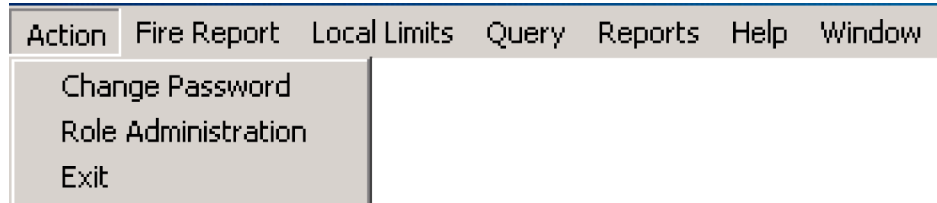
Each FIRESTAT menu contains one or more menu options or commands that allow you to display specific FIRESTAT forms or perform a specific function. You can select a menu option or command whenever the FIRESTAT menu bar is displayed.

When a menu options appears dimmed, it is unavailable to your access role. For more information, see "FIRESTAT access roles," earlier in this chapter.

Action menu

The Action menu allows you to perform the following functions:

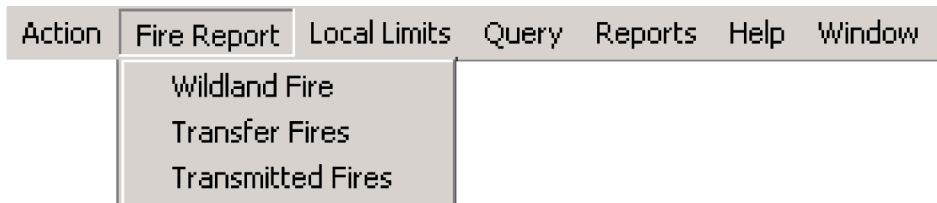
- change your password
- if authorized, assign access roles.



Fire Report menu

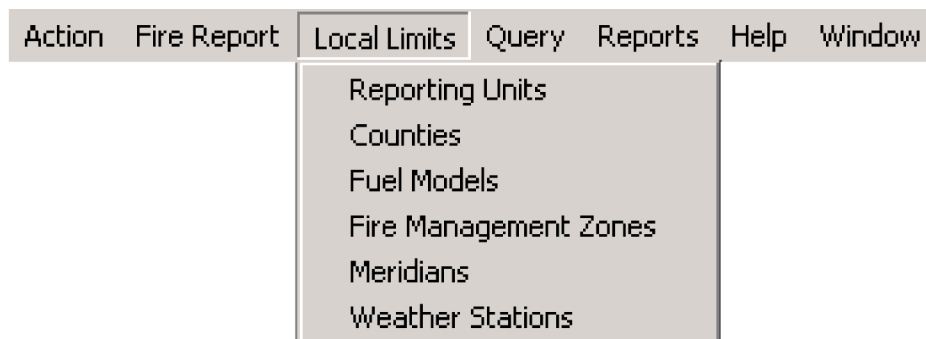
The Fire Report menu allows you to perform the following functions:

- create a wildland fire report
- create the fire report file
- transmit fire report files to NITC
- review transmitted fire report files.



Local Limits menu

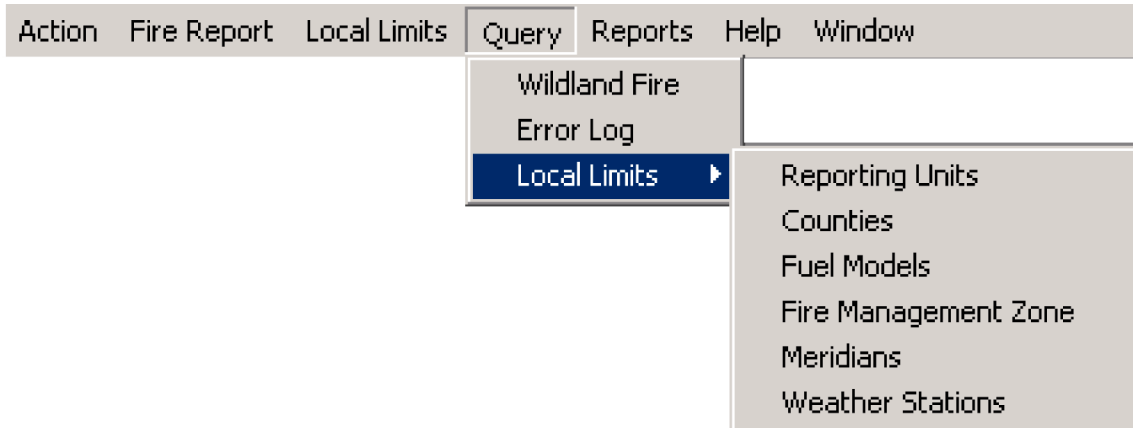
The Local Limits menu allows you to customize the error checking available in FIRESTAT to your specific site.



Query menu

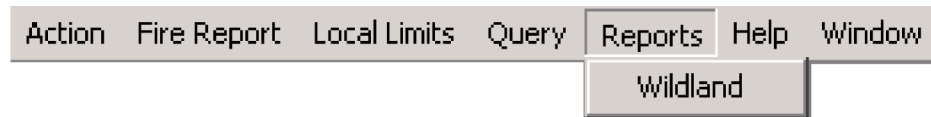
The Query menu allows you to perform the following functions:

- identify and locate specific Wildland Fire reports
- review the Error Log
- review local limits specific for your site.



Reports menu

The Reports menu allows you to print Wildland Fire reports.



Help menu

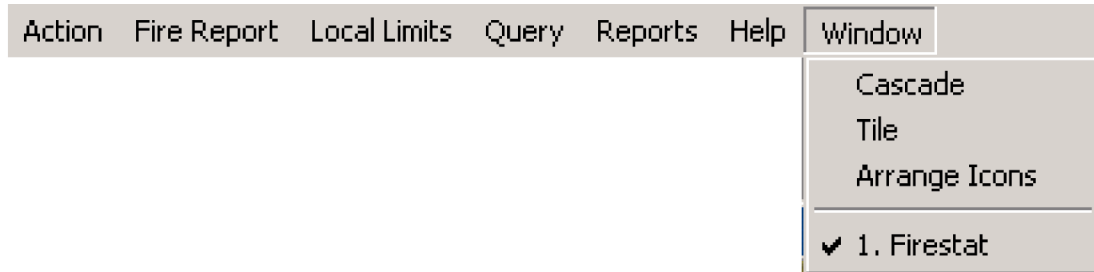
The Help menu allows you to perform the following functions:

- display informational error messages
- show available function keys
- find out more about this version of FIRESTAT.



Window menu

The Window menu displays standard Windows-based options.



Navigating through FIRESTAT

This section explains how to display function keys and the field-specific index to help you navigate through the FIRESTAT. Topics include:

- Displaying function keys
- Displaying the index
- Searching for a specific index entry
- Using the toolbar
- Displaying error information.

Displaying function keys

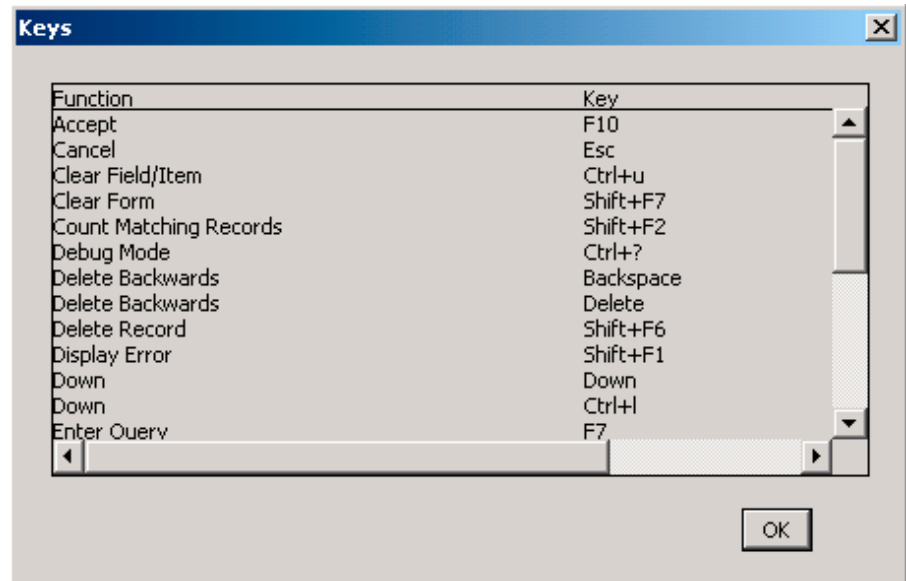
Function keys allow you to perform many common tasks quickly and easily. When you select Show Keys, you can display every function key combination currently assigned.

Show keys is function and menu-specific. Only the active function keys display on the Keys list.

To show active function keys

- On the **Help** menu, click **Show Keys**, or press CTRL + F1.

The following diagram shows the Show Keys window as it appears while displaying the INDIVIDUAL WILDLAND FIRE REPORT.



Displaying the index <List>

In FIRESTAT, an index identifies the possible values for any field in a form that has a defined set of entries. By displaying the index, you can choose from the list of values and save typing time.

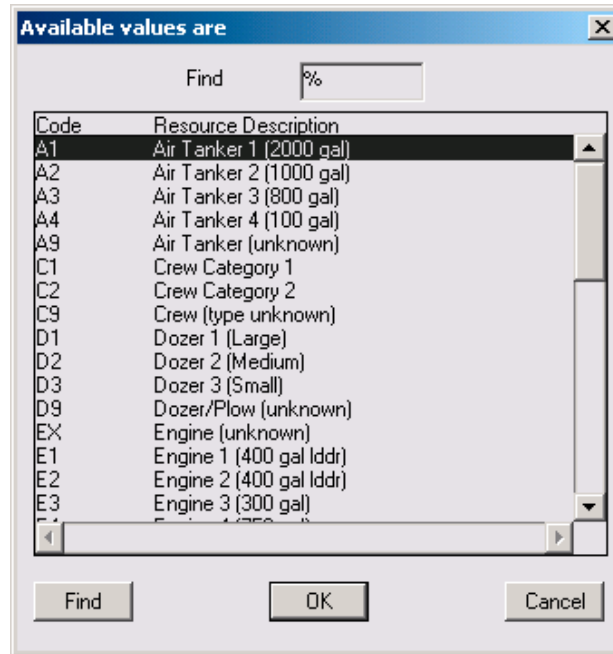


*An index is available for a specific field whenever **List of Values** displays on the status bar.*

To display the index for a specific field on a form

- 1 Click in the field of your choice.
- 2 If **List of Values** displays on the status bar, press F9 or double-click in that field.
- 3 Select the field value of your choice, then click **OK** to exit the index and return to the form.

The following index displays for the Resource Type field on the INDIVIDUAL WILDLAND FIRE REPORT - FMT2.



The index displays only those values that fall within your defined local limits. For example, when you display a list of values for county codes, only those defined for your site will appear on the list. For more information, see the next section, "Defining and editing local limits."

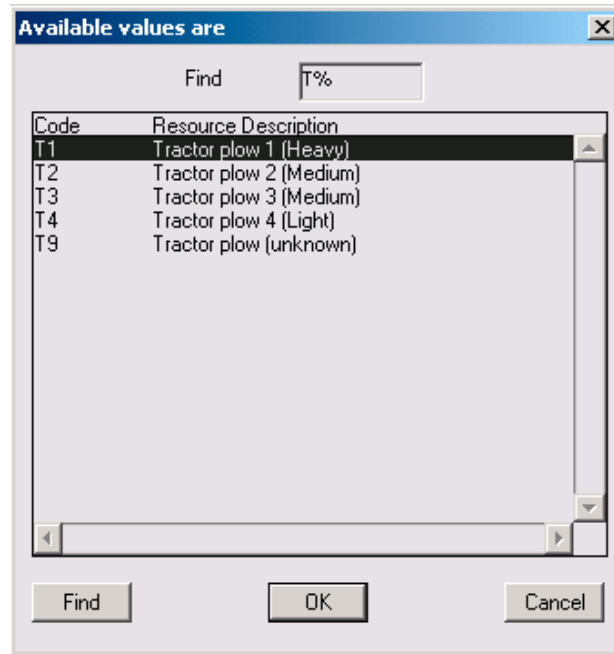
Searching for a specific index entry

The percent sign (%) is a wildcard that allows you to narrow your search when you are unsure of the exact value, or if the index contains a long list of available values.

To search for specific characters within an index of available values

- 1 Click in the field of your choice.
- 2 If **List of Values** displays on the status bar, press F9 or double-click in that field.
- 3 In the **Find** box, type the first one or two characters of the index entry of your choice, type % (the percent sign), and then click **Find**.
- 4 Select the field value of your choice, then click **OK** to exit the index and return to the form.

The following diagram shows a search for all Resource Types that begin with the letter "T."



Displaying error information

The key combination SHIFT + F1 allows you to display error information for individual fields on a FIRESTAT form.

If you are unable to solve the problem using FIRESTAT help information, contact your local FIRESTAT system administrator.

To display available error information for a completed field

- 1 Click in the field of your choice.
- 2 Press SHIFT + F1.
- 3 To exit the help screen and return to the current FIRESTAT form or menu, click **OK**.

Defining and editing local limits

This section explains how to define and print local values and preferences for your site. Before you can create a fire report, you must define your local limits. Defining your local limits includes:

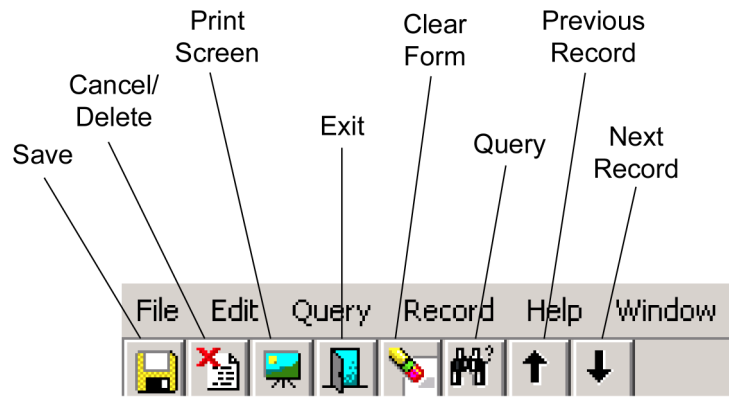
- defining all legal combinations of State, Region, Forests, and Districts
- defining the range of elevation and the latitude and longitude boundaries
- establishing all the weather stations and expected NFDRS fuel models
- identifying counties and wilderness areas.

For example, if you define your assigned Forest with a maximum elevation of 5000 feet and then create a fire report and enter an elevation greater than 5000 feet, FIRESTAT will flag that fire report as an error.

Local Limits toolbar

Toolbar buttons can help you define and edit the local limits for your site. You can use these buttons in place of function keys and menu options, or use a combination of buttons, function keys and menu options.

The following diagram outlines the functions on the Local Limits toolbar.



To access a Local Limits form

- On the **Local Limits** menu, click the local limits form of your choice.

Reporting Units form

Field	Description and action to be taken
<i>Enter one line for every legal combination valid for your site.</i>	
Unit	For every legal combination, type every Region or Unit number that your local site handles.
State	For every legal combination, type the two-character state postal code that your local site handles.
Dist.	For every legal combination, type every District number that your local site handles. <i>For example, a unit that has four Districts across two states could have up to eight entries.</i>
Elevation Maximum	Type the maximum elevation you expect for your local site, in feet above sea level. <i>Mt. McKinley in Alaska is 20,320 feet. The maximum elevation of your unit cannot exceed this number or the maximum elevation for the state.</i>
Elevation Minimum	Type the minimum elevation you expect for your local site, in feet above sea level. <i>Death Valley's minimum elevation is -284 feet. The minimum elevation of your unit cannot be less than this number.</i>
<i>For latitude and longitude entries, allow several minutes to account for fires that start outside your protection responsibility and either threaten or burn into NFS lands.</i>	
Latitude North Deg	Type the northernmost latitude just outside your local site, in degrees.

Latitude North Min	Type the northernmost latitude just outside your local site, in minutes.
Latitude North Sec	Type the northernmost latitude just outside your local site, in seconds.
Latitude South Deg	Type the southernmost latitude just outside your local site, in degrees.
Latitude South Min	Type the southernmost latitude just outside your local site, in minutes.
Latitude South Sec	Type the southernmost latitude just outside your local site, in seconds.
Longitude East Deg	Type the easternmost longitude just outside your local site, in degrees.
Longitude East Min	Type the easternmost longitude just outside your local site, in minutes.
Longitude East Sec	Type the easternmost longitude just outside your local site, in seconds.
Longitude West Deg	Type the westernmost longitude just outside your local site, in degrees.
Longitude West Min	Type the westernmost longitude just outside your local site, in minutes.
Longitude West Sec	Type the westernmost longitude just outside your local site, in seconds.

To complete the Reporting Units form

- 1 On the **Local Limits** menu, click **Reporting Units**.
- 2 Complete each field as instructed on the previous pages. Press TAB after each entry.
- 3 When finished, click **OK** and then click **Exit** on the **File** menu, click **Exit** on the **Fire Report** toolbar, or press CTRL + q.

To delete a reporting unit

You cannot delete a reporting unit that exists on a fire report.

- 1 On the **Local Limits** menu, click **Reporting Units**.
- 2 On the **Local Limits** toolbar, click **Previous Record** and **Next Record** to highlight the **Unit** of your choice, and then press SHIFT + F6.
- 3 On the **Delete Unit** dialog box, click **Yes** to confirm or click **No** to cancel.
- 4 To save, click **OK**, and then click **Save** on the **File** menu, click **Save** on the **Fire Report** toolbar, or press F10.

Fuel Models form

Local Use	Code	Description
<input type="checkbox"/>		
<input type="checkbox"/>		
<input type="checkbox"/>		
<input type="checkbox"/>		
<input type="checkbox"/>		
<input type="checkbox"/>		
<input type="checkbox"/>		
<input type="checkbox"/>		
<input type="checkbox"/>		
<input type="checkbox"/>		

To add a fuel model to your local site

- 1 On the **Local Limits** menu, click **Fuel Models**.
- 2 Under **Local Use**, click every appropriate fuel model check box that you plan to use for your local site.
- 3 When finished, click **OK** and then click **Exit** on the **File** menu, click **Exit** on the **Fire Report** toolbar, or press CTRL + q.

Fire Management Zones form

Unit	Fmz Code	Fmz Description

To include Fire Management Zone codes for your local site

- 1 On the **Local Limits** menu, click **Fire Management Zones**.
- 2 Type the **Unit** number to be included in your local site.
- 3 For each **Unit** number, type the **Fmz Code** and **Fmz Description** that you will use on your local site.
- 4 When finished, click **OK** and then click **Exit** on the **File** menu, click **Exit** on the **Fire Report** toolbar, or press CTRL + q.

To delete a Fire Management Zone code

- 1 On the **Local Limits** menu, click **Fire Management Zones**.
- 2 On the **Local Limits** toolbar, click **Previous Record** and **Next Record** to highlight the **Unit** of your choice, and then press SHIFT + F6.
- 3 On the **Delete FMZ Code** dialog box, click **Yes**.

- When finished, click **OK** and then click **Exit** on the **File** menu, click **Exit** on the **Fire Report** toolbar, or press CTRL + q.

Before you complete this task, see Appendix A, "Codes" to identify the principal meridians applicable for your site. If your Unit is not in the Public Lands Survey States, which includes the 13 original colonies and derived states, and Texas and Hawaii, do not select any meridian codes.

Weather Stations form

The screenshot shows a dialog box titled "Firestat" with a subtitle "Local Limits Weather Stations". It features a "State" dropdown menu, a "Local Use" section with a vertical list of checkboxes, and a table with columns for "Station Code", "Description", "Station Type", and "State". The table has 10 rows. At the bottom right are "OK" and "Cancel" buttons.

To include a predefined weather station in your local site

- On the **Local Limits** menu, click **Weather Stations**.
- In the **State** box, type or select the **State** of your choice.
- Under **Local Use**, click every appropriate weather station check box that you plan to use for your local site.
- When finished, click **OK** and then click **Exit** on the **File** menu, click **Exit** on the **Fire Report** toolbar, or press CTRL + q.

If the weather station you need does not appear on the list, contact the National Fire Applications support staff at 1-800-253-5559.

To add a new (uncataloged) weather station

You can add a weather station to your local limits to account for a fire report that does not identify any particular weather station, or to identify a weather station that is not defined.

- 1 On the **Local Limits** menu, click **Weather Stations**.
- 2 In the **State** box, type or select the **State** of your choice, then scroll down to the end of the Weather Stations list.
- 3 On the last line in the first blank row of text boxes, click to select the **Local Use** check box.
- 4 Complete the **Station Code**, **Description**, **Station Type**, and **State** text boxes, and then click **OK**.

For example, you can add the station "999999" to define a weather station that is "unknown."

To delete a weather station

You cannot delete a cataloged weather station that is defined in NIFMID or one that exists on a fire report.

- 1 On the **Local Limits** menu, click **Weather Stations**.
- 2 In the **State** box, type or select the **State** for the **Weather Station** of your choice.
- 3 On the **Local Limits** toolbar, click **Previous Record** and **Next Record** to highlight the **Weather Station** of your choice, and then press SHIFT + F6.
- 4 On the **Delete Weather Station** dialog box, click **Yes**.
- 5 To save, click **OK**, and then click **Save** on the **File** menu, click **Save** on the **Fire Report** toolbar, or press F10.

Chapter 3. Working with wildland fire reports

This chapter outlines the information you need to create, edit, and print wildland fire reports. Topics include:

- Creating a wildland fire report
- Viewing, searching for, and printing wildland fire reports.

To edit a fire report after you have created the fire report file, see “Correcting erroneous fire reports” in Chapter 4, “Generating and transmitting fire reports.”

Creating a wildland fire report

At the minimum, you must complete the following fields to save a fire report to the database:

- Region/Forest/District ID and SO Fire Number
- Ownership/State at Origin
- Discovery Date/Time.

The **INDIVIDUAL WILDLAND FIRE REPORT** consists of five formats:

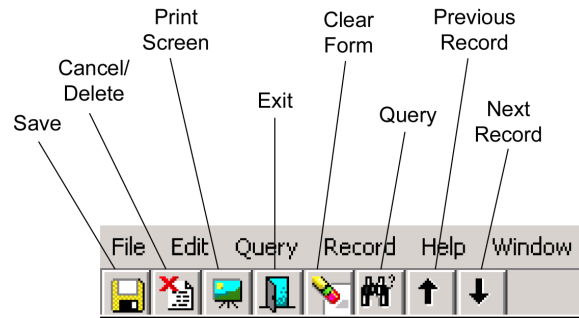
- **FMT1** identifies the name, number, and location of the fire, the agency identification, and occurrence information.
- **FMT2** identifies the type of action used for initial and final fire management actions.
- **FMT3** outlines the number of acres burned and a basic description of the fire site.
- **FMT4** identifies any special codes, additional remarks, and *submitted by* and *approved by* signatures.
- **FMT5** defines up to twenty protection agencies and the number of acres that each agency protects.

To access the INDIVIDUAL WILDLAND FIRE REPORT

- On the **Fire Report** menu, click **Wildland Fire**.

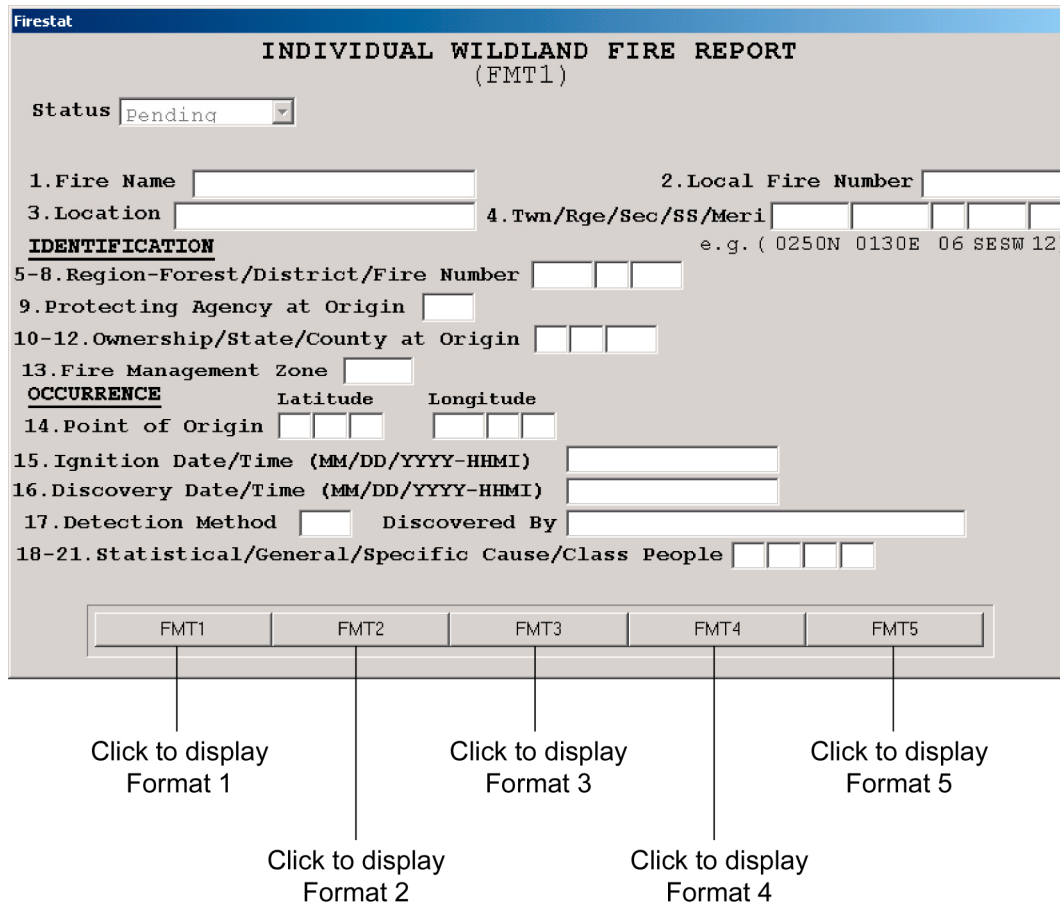
Fire Report toolbar

The Fire Report toolbar allows you to perform a variety of functions without entering a complex set of commands.



Format buttons

The Fire Report format buttons allow you to easily access each of the five INDIVIDUAL WILDLAND FIRE REPORT formats.



INDIVIDUAL WILDLAND FIRE REPORT - FMT1

Firestat	
INDIVIDUAL WILDLAND FIRE REPORT (FMT1)	
Status	<input type="text" value="Pending"/>
1. Fire Name	<input type="text"/>
2. Local Fire Number	<input type="text"/>
3. Location	<input type="text"/>
4. Twn/Rge/Sec/SS/Meri	<input type="text"/> <input type="text"/> <input type="text"/> <input type="text"/> <input type="text"/>
IDENTIFICATION	
5-8. Region-Forest/District/Fire Number	<input type="text"/> <input type="text"/> <input type="text"/> <input type="text"/>
9. Protecting Agency at Origin	<input type="text"/>
10-12. Ownership/State/County at Origin	<input type="text"/> <input type="text"/> <input type="text"/>
13. Fire Management Zone	<input type="text"/>
e.g. (0250N 0130E 06 SESW 12)	
OCCURRENCE	
14. Point of Origin	Latitude <input type="text"/> <input type="text"/> <input type="text"/> Longitude <input type="text"/> <input type="text"/> <input type="text"/>
15. Ignition Date/Time (MM/DD/YYYY-HHMM)	<input type="text"/>
16. Discovery Date/Time (MM/DD/YYYY-HHMM)	<input type="text"/>
17. Detection Method	<input type="text"/> Discovered By <input type="text"/>
18-21. Statistical/General/Specific Cause/Class People	<input type="text"/> <input type="text"/> <input type="text"/> <input type="text"/>
<input type="button" value="FMT1"/> <input type="button" value="FMT2"/> <input type="button" value="FMT3"/> <input type="button" value="FMT4"/> <input type="button" value="FMT5"/>	

Field	Description and action to be taken
Status	This field identifies the status of the fire report: <ul style="list-style-type: none"> • pending • complete • failed.
1. Fire Name	Type the assigned name of the fire. <i>Do not include Dispatch or District number or "fire" as part of the Fire Name. If the assigned name of the fire is greater than 20 characters, abbreviate it where possible.</i>
2. Local Fire Number (optional)	Type the local number assigned to the fire. <i>This number is for local purposes only. It is not retained in the NIFMID database. If directed by your unit, type the District or Dispatch fire number here.</i>
3. Location (optional)	Type a description of the location, particularly if the fire is not in a public land survey State. <i>Enter the legal location in the Twn/Rge/Sec/SS/Mer field. The Location field is for local purposes only and is not retained in the NIFMID database.</i>

<p>4. Twn/Rge/Sec/SS/Meri</p>	<p>For fires in the 30 public land survey system states, type the township, range, section, subsection, and principal meridian to locate the fire origin.</p> <p>Township:</p> <p>In the first box, type the full township number, a value from 001 to 199. Use the following code to denote a full or partial township, type the N or S direction.</p> <p>0 full township (most common) 1 1/4 township (very rare) 2 1/2 township (common in some areas) 3 3/4 township (very rare).</p> <p><i>For example, code township 103 1/2 North as "1032N."</i></p> <p>Range:</p> <p>In the second box, type the range as instructed above in "Township," type the E or W direction.</p> <p><i>For example, code range 12 East as "0120E."</i></p> <p>Section:</p> <p>In the third box, type a section number, a value from 1 to 99.</p> <p>Subsection:</p> <p>In the fourth box, type the smallest subdivision first, to the nearest quarter section (160 acres) or quarter quarter (40 acres).</p> <p><i>For example, code the southwest quarter of the northeast quarter as "SWNE."</i></p> <p>Meridian:</p> <p>In the fifth box, type or select the appropriate principal meridian code.</p> <p><i>The legal location should correspond directly to the latitude and longitude coordinates.</i></p>
<p>IDENTIFICATION: 5-8. Region-Forest / District / Fire Number <i>(required)</i></p>	<p>Type the Region, Forest, and District IDs, and SO Fire Number that identify the reporting unit.</p> <p>Region-Forest:</p> <p>In the first box, type or select the appropriate Region and Forest numbers.</p> <p>District:</p> <p>In the second box, type or select the appropriate district number.</p> <p>SO Fire Number:</p> <p>In the third box, type the SO fire number, a number from 1 to 999.</p> <p><i>Unless your unit has a compelling local need, the SO Fire Number should be the next available consecutive number. Enter the Dispatch number in the Local Fire Number field.</i></p>

9. Protecting Agency at Origin	Type or select the appropriate code of the agency that is legally responsible to provide primary protection for the land on which the fire started.
10-12. Ownership / State / County at origin (required)	Select the ownership, state, and county at the point of origin. Ownership: In the first box, type or select the appropriate ownership status code. State: In the second box, type or select the appropriate state postal code. County: In the third box, type or select the appropriate Federal Information Processing System (FIPS) county code.
13. Fire Management Zone	Type the Fire Management Zone (FMZ) in which the fire burned. <i>If more than one FMZ is involved, enter the FMZ with the most burned area. If the fire burned predominately on non-National Forest land that is not in an FMZ, type "9999."</i>
OCCURRENCE: 14. Point of Origin-Latitude Longitude	Type the latitude and longitude at the fire's point of origin. Latitude: In the first box, type the degrees of latitude at the point of origin. In the second box, type the minutes of latitude. In the third box, type the seconds of latitude. Longitude: In the first box, type the degrees of longitude at the point of origin. In the second box, type the minutes of longitude. In the third box, type the seconds of longitude.
15. Ignition Date/Time	Type the month, day, year, hour, and minute (in military time) when the fire started, in the format MM/DD/YYYY HHMI. <i>If the date and/or time is unknown, enter the best estimate. Time is a value from "0000" (midnight) to "2359."</i>
15. Discovery Date/Time (required)	Type the month, day, year, hour, and minute (in military time) when the fire was discovered, in the format MM/DD/YYYY HHMI. <i>Ignition Date/Time and Discovery Date/Time may be identical.</i>
17. Detection Method	Type or select the appropriate initial detection method code.
Discovered By	Type the name of the lookout or person who discovered the fire.

18-21. Statistical /General / Specific Cause/ Class People	<p>Select the appropriate statistical, general, specific cause codes, and class of people code that best describe the actual cause of the fire.</p> <p>Statistical:</p> <p>In the first box, type or select the appropriate statistical cause code - <i>required</i>.</p> <p><i>All previously existing fire reports without a statistical cause will be updated in the database. These fire reports will contain a miscellaneous code of "9."</i></p> <p>General:</p> <p>In the second box, type or select the appropriate general cause code.</p> <p>Specific Cause:</p> <p>In the third box, type or select the appropriate specific cause code.</p> <p>Class People:</p> <p>In the fourth box, type or select the appropriate class of people code.</p>
---	---

To complete the INDIVIDUAL WILDLAND FIRE REPORT - FMT1

- 1 Complete the fields in the form as instructed on the previous pages.
- 2 When finished, click **FMT2**.

INDIVIDUAL WILDLAND FIRE REPORT - FMT2

Field	Description and action to be taken
Fire	This field is a consecutive number assigned by FIRESTAT. <i>This field is the Fire ID number that is displayed on FMT1, field 8.</i>
22. (a) Wildland fire used for resource benefits	Select this check box if this wildland fire was used for resource benefit.
22 (b). Initial Suppression Strategy	Click the appropriate option button to identify the initial suppression strategy.
23. Escaped Fire	Select the Escaped Fire check box if the fire was declared an escaped fire. Clear the Escaped Fire check box if the planned suppression strategy for the fire was achieved by the planned initial action/first reinforcement forces.
24. Initial Action Date/Time	Type the month, day, year, hour, and minute (in military time) when initial suppression action was started at the site of the fire, in the format MM/DD/YYYY HHMM. <i>Time of Initial Action must be at least one minute after Time of Discovery. For confinement and surveillance fires, enter the time of the first surveillance.</i>

<p>25. Suppression Strategy Attained Date/Time</p>	<p>Type the month, day, year, hour, and minute (in military time) when the initial suppression action was achieved, in the format MM/DD/YYYY HHMI.</p> <p><i>Suppression Strategy Attained Date/Time must be at least one minute after Initial Action Date/Time. For confinement and surveillance fires, enter the time of the last surveillance.</i></p> <p><i>If this is an escaped fire, type the date and time the final suppression strategy for the escaped fire situation analysis was attained.</i></p>
<p>26. Fire Out Date/Time</p>	<p>Type the month, day, year, hour, and minute (in military time) when the fire was declared out, in the format MM/DD/YYYY HHMI.</p> <p><i>Fire Out Date/Time must be at least one minute after Suppression Strategy Attained Date/Time.</i></p>
<p>27. Forces Used up to Time of Escape or Time Initial Strategy Met</p> <div data-bbox="425 772 574 827" style="border: 1px solid gray; padding: 2px; width: fit-content; margin: 10px auto;">Add Dup</div>	<p>Select the resource codes, agencies, and the quantities of the suppression forces used up until the initial selected suppression strategy was attained. Complete as many boxes as appropriate to adequately describe the forces used.</p> <p>Resource Type:</p> <p style="padding-left: 20px;">In the first box, type or select the appropriate resource code.</p> <p>Agency:</p> <p style="padding-left: 20px;">In the second box, type or select the appropriate agency.</p> <p>Quantity:</p> <p style="padding-left: 20px;">In the third box, type the quantity of the resource type used.</p> <ul style="list-style-type: none"> • Click Add Dup to add a duplicate row of resource information. <p><i>If this is an escaped fire, enter the codes for and the quantities of the suppression forces used up until the time the fire escaped.</i></p> <p><i>For Incident Command System (ICS) terminology and resource module types, refer to Appendix A in the "Fireline Handbook, FSH 5109.32a."</i></p>

To complete the INDIVIDUAL WILDLAND FIRE REPORT - FMT2

- 1 Complete the fields in the form as instructed on the previous pages.
- 2 When finished, click **FMT3**.

To delete a row of resource information

- In **FMT2**, click to highlight the **Resource Type** of your choice, and then press SHIFT + F6.

Your changes are saved automatically.

INDIVIDUAL WILDLAND FIRE REPORT- FMT3

Firestat	
Fire <input type="text"/>	INDIVIDUAL WILDLAND FIRE REPORT (FMT3)
DESCRIPTION	
28.FFF Cost(\$)	<input type="text"/>
29.FS Acres (All Forests)	<input type="text"/>
30.Non-FS Acres Protected by FS	<input type="text"/>
31.Non-FS Acres Not Protected by FS	<input type="text"/>
32.Acres Managed for Resource Benefit	<input type="text"/>
Total Acres Burned	<input type="text"/>
33.FMZ NVC per Acre(\$)	<input type="text"/>
34.Fire Intensity Level	<input type="text"/>
35.Reporting Weather Station	<input type="text"/>
36.NFDRS Fuel Model	<input type="text"/>
37.Cover Class	<input type="text"/>
38.Aspect	<input type="text"/>
39.Slope Percentage	<input type="text"/>
40.Elevation (feet)	<input type="text"/>
<input type="button" value="FMT1"/> <input type="button" value="FMT2"/> <input type="button" value="FMT3"/> <input type="button" value="FMT4"/> <input type="button" value="FMT5"/>	

Field	Description and action to be taken
28. FFF Cost	Type the estimated total emergency Fire Fighting Funds (FFF), in whole dollars, expended by the Forest Service as a result of this fire. <i>Include G (fires managed for resource benefit) and P (wildland fire) codes.</i>
29. FS Acres (All Forests)	Type the total number of acres, to the nearest one-hundredth, of National Forest Service lands burned on all Forests.
30. Non-FS Acres Protected by FS	Type the number of acres, to the nearest one-hundredth, of non-National Forest System lands protected by the Forest Service within the fire perimeter.
31. Non-FS Acres Not Protected by FS	Type the number of acres, to the nearest one-hundredth, of non-National Forest System lands outside Forest Service protection within the fire perimeter.
<i>The minimum fire size is 0.01 acre. For example, a fire may be 123.25 of FS acres in size.</i>	
32. Acres Managed for Resource Benefit	Type the number of acres, to the nearest one-hundredth, burned under prescription using the rules that govern wildland fire for resource benefits. <i>This amount must be less than or equal to the total number of acres burned, and will usually be less than or equal to NFS acres.</i>

Total Acres Burned	This field identifies the total number of acres burned and the corresponding fire size class, where: A identifies fires up to 0.25 acres B identifies fires from 0.26 to 9.9 acres C identifies fires from 10 to 99.5 acres D identifies fires from 100 to 299 acres E identifies from 300 to 999 acres F identifies from 1000 to 4999 acres G identifies fires greater or equal to 5000 acres.
33. FMZ NVC per acre	Type the average per acre net resource value change (NVC), in whole dollars, developed for the National Fire Management Analysis System (NFMAS) planning for the Fire Management Zone (FMZ). <i>Enter damages (losses) as a positive number and benefits as a negative number. Do not recalculate nor include fire effects or NVC for this specific fire. If the fire occurred on non-National Forest and the Fire Management Zone is "9999," enter "0" (zero).</i>
34. Fire Intensity Level	Type or select the appropriate fire intensity level (FIL) code for the predominant or typical sustained average flame length observed at the head of the fire during the initial attack.
35. Reporting Weather Station	Type or select the appropriate six-digit weather station number that represents conditions similar to those at the fire site. <i>The closest weather station may not necessarily represent the fire site.</i>
36. NFDRS Fuel Model	Type or select the appropriate one-character code of the prevailing NFDRS fuel model where the fire was burning at the same time and place where the Fire Intensity Level was observed.
37. Cover Class	Type or select the appropriate two-digit code of the regional vegetation cover type where the fire burned during the initial attack.
38. Aspect	Type or select the appropriate general aspect code where the fire was burning at the time of initial suppression action.
39. Slope Percentage	Type the slope percent at the fire's origin, a value from 0 to 150 percent.
40. Elevation (feet)	Type the elevation, in feet, at the head of the fire at initial action stage.

To complete the INDIVIDUAL WILDLAND FIRE REPORT - FMT3

- 1 Complete the fields in the form as instructed on the previous pages.
- 2 When finished, click **FMT4**.

45. Approved By	Follow required Forest or Regional instructions for report preparation, review, and approval.
46. Date	Type the date the fire report was approved, in the format MMDDYYYY.


To complete the INDIVIDUAL WILDLAND FIRE REPORT - FMT4

- 1 Complete the fields in the form as instructed on the previous pages.
- 2 When finished, click **FMT5**.

INDIVIDUAL WILDLAND FIRE REPORT- FMT5

FMT5 redisplay the number of acres entered in FMT3 fields 29, "FS Acres (All Forests)," 30, "Non-FS Acres Protected by FS," and 31, "Non-FS Acres Not Protected by FS." FMT 5 allow you to further define the ownership and/or management, in acres for these fields. You must complete at least one line per field. If you entered an amount in all three fields, you must complete at least three lines.

For example, if you entered "1000 acres" in field 29, "NFS Acres (All Forests)," and the fire burned on two national forests, complete two lines to define the number of acres that burned on each national forest.

Field	Description and action to be taken
Prot Agcy 	For the number of acres specified for fields 29, “FS Acres (All Forests),” 30, “Non-FS Acres Protected by FS,” and 31, “Non-FS Acres Not Protected by FS,” type or select every agency that provided primary fire protection. <ul style="list-style-type: none"> For fires smaller than 100 acres, click Auto Fill.
Land Owner	For each identified protection agency, press F9, then click the appropriate two or three-character Federal, state, local, or private owner group code that owns the land where fire protection was provided. <i>Land Owner may or may not be the same as protection agency.</i>
FS Unit	For each protection agency or land owner defined as “USF,” type or select the appropriate Region and Forest code where the fire occurred. <i>For non-Forest Service lands outside NFS protection, leave this field blank.</i>
Acres	Type the number of acres, to the nearest one-hundredth, for each line defined by Prot Agcy, FS Unit, and Land Owner fields. <i>The number of acres cannot be greater than the total number of acres specified for fields 29, “NFS Acres (All Forests),” 30, “Non-FS Acres Inside,” and 31, “Non-FS Acres Outside.”</i>

To complete the INDIVIDUAL WILDLAND FIRE REPORT - FMT5

- 1 Complete the fields in the form as instructed on the previous pages.
- 2 When finished, click **Save** on the **File** menu, click **Save** on the **Fire Report** toolbar, or press F10.

To edit a wildland fire report

To edit a fire report after you have created the fire report file, see “Correcting erroneous fire reports” in Chapter 4, “Generating and transmitting fire reports.”

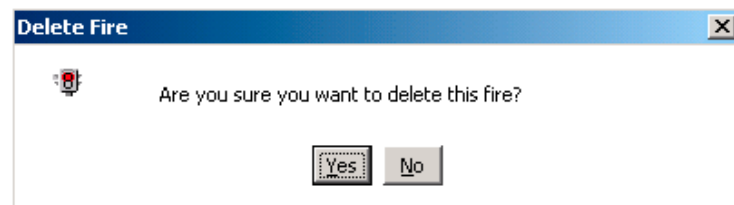
- 1 On the **Fire Report** menu, click **Wildland Fire**.
- 2 Locate the fire report of your choice.
- 3 Change the appropriate fields, and then click **Save** on the **File** menu, click **Save** on the **Fire Report** toolbar, or press F10.

For more information about locating fire reports, see the task, “To locate the fire report of your choice” in “Using a wildcard to perform a query,” in the next section.

To delete a wildland fire report

- 1 On the **Fire Report** menu, click **Wildland Fire**.
- 2 Locate the fire report of your choice.
- 3 Press SHIFT + F6, and then click **Yes** on the **Delete Fire** dialog box.

The following diagram shows the Delete Fire dialog box.



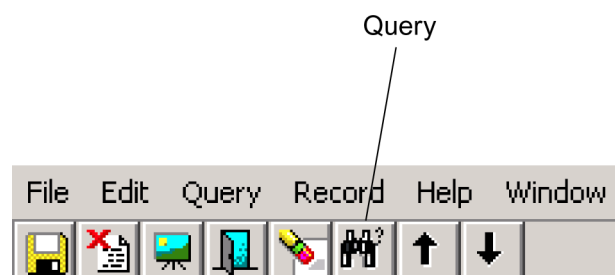
For more information about locating fire reports, see the task, "To locate the fire report of your choice" in "Using a wildcard to perform a query," in the next section.

Searching for and printing fire reports

This section explains how to perform basic FIRESTAT utilities, including how to perform a query to locate the fire report of your choice and how to print a fire report.

Using a wildcard to perform a query

A wildcard query allows you to locate any fire report by simply typing the first few characters of a field followed by a percent sign (%). After executing the query, every fire report is reviewed for records that begin with those first few characters. Those fire reports matching the basic criteria are listed in consecutive order.



FIRESTAT is case-sensitive. Remember to use uppercase and lowercase letters as appropriate when you perform queries.

To locate the fire report of your choice

- 1 From the FIRESTAT initial screen, click **Wildland Fire** on the **Query** menu.

- 2 To locate the fire report of your choice, press F7, click **Enter Query** on the **Query** menu, or press **Query** on the **Fire Report** toolbar.

When you change to Query mode, the fire report form changes from light gray to dark gray.

- 3 In the **1. Fire Name field**, type the first one or two characters of the Fire Name, and then type % (percent sign).
- 4 On the **Query** menu, click **Execute Query**, press F8, or press **Query** on the **Fire Report** toolbar.
- 5 On the **Record** menu, click **Next Record** or **Previous Record** until the fire report of your choice displays on your screen.

You can also use the up arrow (↑) and down arrow keys (↓) on your keyboard to locate the fire report of your choice.

- 6 To return to the FIRESTAT initial screen, click **Exit** on the **File** menu, click **Exit** on the **Fire Report** toolbar, or press CTRL + q.

Printing screen captures

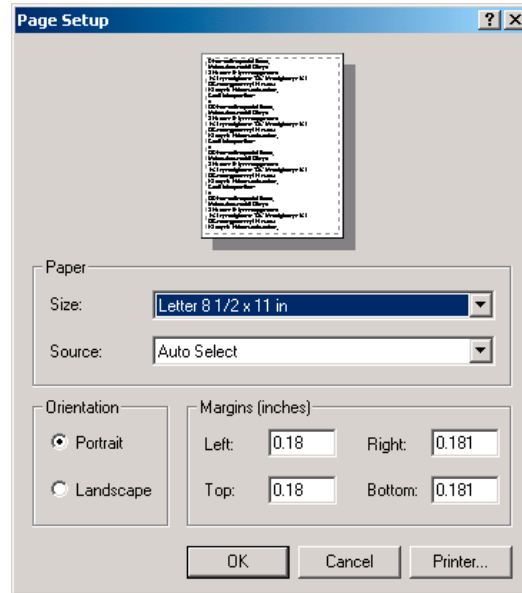
You can use the screen capture utility in FIRESTAT to obtain snapshots of each INDIVIDUAL WILDLAND FIRE REPORT format.



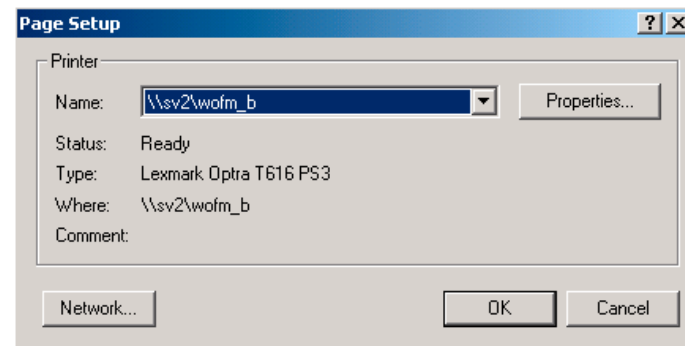
To print a screen capture of the fire report of your choice

- 1 Locate the fire report of your choice, and then click the FMT button of your choice.
- 2 On the **Fire Report** toolbar, click the **Print Screen** icon.
- 3 Complete the dialog boxes as needed. Be sure to select the appropriate printer for your location.

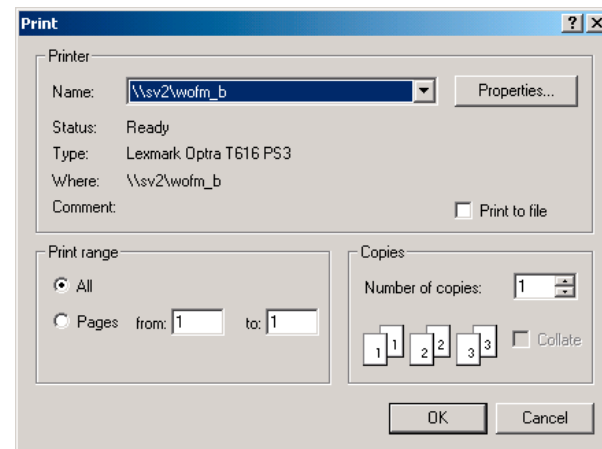
The following Page Setup dialog box allows you to choose the size and orientation of your paper. You can also click **Printer** to change the printer designation.



The following dialog box allows you to change the printer designation.



The following Print dialog box allows you to specify how many copies of the screen capture you wish to print.



Chapter 4. Transmitting fire reports to NIFMID

This chapter outlines the information you need to transmit fire reports to the National Interagency Fire Management Integrated Database (NIFMID).

Topics include:

- Transferring fire reports to the NIFMID database
- Troubleshooting tips.

Transferring your fire reports to the NIFMID database

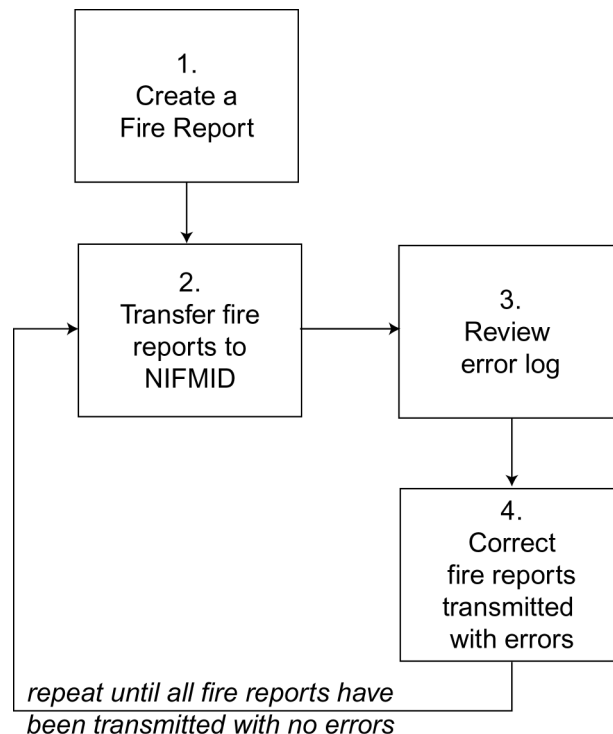
FIRESTAT 5.4 allows you to directly transfer your fire reports into NIFMID. To complete this process, you must perform the following steps:

1. Create a fire report.

For more information about creating a fire report, see Chapter 3, "Working with wildland fire reports."

2. Transfer the fire reports of your choice.
3. Review the error log for fire reports transmitted with errors.
4. Correct transmitted fire reports that contain errors
5. Repeat steps 2, 3, and 4 until all fire reports are transferred and no fire reports appear on the Transmitted with Errors error log.

The following diagram shows the basic process for transferring fire reports to NIFMID.



2. Transferring fire reports to NIFMID

This section explains how to transfer selected fire reports to the NIFMID database.

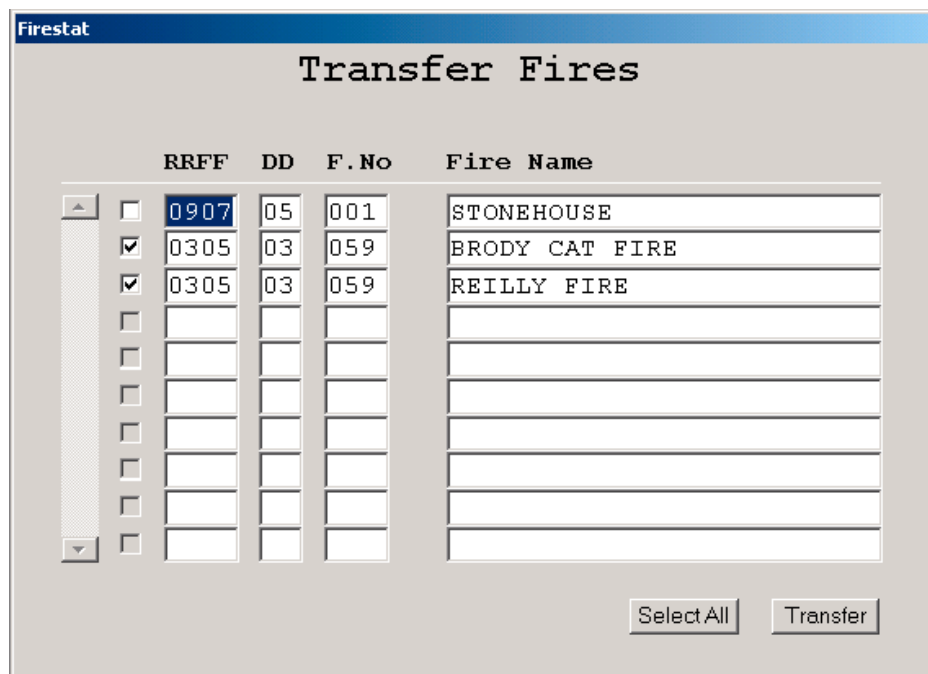
To select fire reports to be transferred

Select All

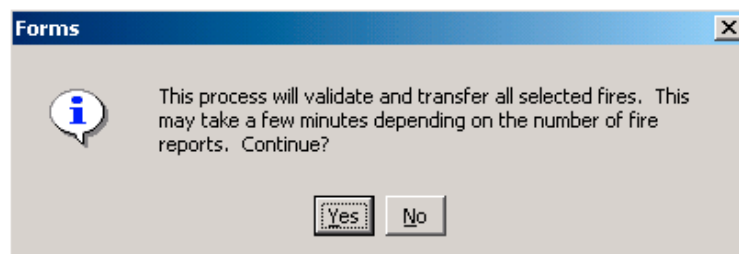
Transfer

- 1 On the **Fire Report** menu, click **Transfer Fires**.
- 2 On the **Transfer Fires** listing, select each check box next to the fire report of your choice. To choose all fire reports, click the **Select All** button.
- 3 Click the **Transfer** button.
- 4 On the **Forms** dialog box, click **Yes** to confirm the transfer or click **No** to cancel.
- 5 To return to the FIRESTAT initial screen, click **Exit** on the **File** menu, click **Exit** on the **Fire Report** toolbar, or press CTRL + q.

The following diagram shows the Transfer Fires screen. From here, you can select which fire reports you wish to transfer to the NIFMID database.



The following diagram shows the Forms dialog box.



3. Reviewing the error log for failed fire reports

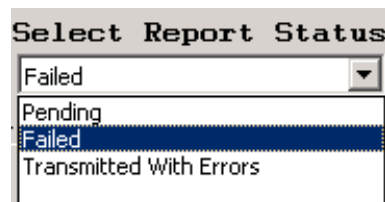
This section explains how to review the error log for fire reports that fail to pass Local Limits specifications and how to review fire reports that were transmitted with errors to NIFMID.

Fire reports are sorted by Region and Forest in numerical order.

To review a failed fire report

- 1 On the **Query** menu, click **Error Log**.
- 2 On the **Select Report Status** menu, click **Failed**.
- 3 Select the fire report of your choice, then click **Error**.
- 4 To print the list of error messages, click **Print Screen** on the **File** menu.
- 5 To return to the FIRESTAT initial screen, click **Exit** on the **File** menu, click **Exit** on the **Fire Report** toolbar, or press CTRL + q.

The following diagram shows the Select Report Status menu. From here, you can review Pending, Failed, and Transmitted fire reports.



The following diagram shows the FIRE STATUS REPORT screen listing failed fire reports.

Firestat									
FIRE STATUS REPORT									
									Select Report Status
									Failed
RFFF	DD	F.NO	Fire Name	State	Discovery Date	Status	Fire Type	Errors	
0907	05	001	Rainbow	MI	05/02/2003	F	Wildfire	6	
0907		001	Rainbow	MI	05/02/2002	F	Wildfire	9	
0501	01	002	Rainbow	CA	05/02/2002	F	Wildfire	6	
0412	01	002	ROCK	ID	05/03/2002	F	Wildfire	7	
0501	51	003	ORION	CA	09/10/2000	F	Wildfire	7	
0412	01	003	test	ID	10/01/2002	F	Wildfire	7	
0310	06	003	test1	NM	10/01/2002	F	Wildfire	7	
0310	06	006	test2	NM	02/01/2002	F	Wildfire	8	
0501	01	007	test	CA	07/01/2001	F	Wildfire	6	
0907	01	010	Blazing Saddles	MI	04/19/2001	F	Wildfire	4	
9999	01	021	WOSYS	NM	05/05/2000	F	Wildfire	2	
0412	01	041	ROCKY	ID	08/05/2000	F	Wildfire	5	
0807	17	072	FENCE WALKER	MS	02/25/1996	F	Wildfire	1	
0412	01	082	Puppy Dog	ID	08/01/2001	F	Wildfire	6	
0206	02	100	test	WY	01/03/2003	F	Wildfire	6	
0206	02	101	test	WY	01/04/2003	F	Wildfire	6	
0206	02	102	test	WY	01/04/2003	F	Wildfire	6	

Error

4. Correcting fire reports that failed or were transmitted with errors

This section explains how to correct fire reports that failed to pass the Local Limits specifications or were transmitted with errors to NIFMID.

To correct errors on a failed fire report

- 1 On the **Fire Report** menu, click **Wildland Fire**.
- 2 Press F7, click the **Status** drop-down arrow, and then click **Failed**.
- 3 In the **1. Fire Name** field, type the name of the failed fire report and then press F8.

For more information about locating fire reports, see the task "To locate the fire report of your choice" in "Using a wildcard to perform a query," in Chapter 3, "Working with wildland fire reports."

- 4 Correct the fire report fields as appropriate.
- 5 When finished, click **Save** on the **File** menu, click **Save** on the **Fire Report** toolbar, or press F10.

To edit a transmitted fire report that contained errors

- 1 On the **Fire Report** menu, click **Transmitted Fires**.
- 2 Perform a query to locate the fire report that you want to edit.

For more information about locating fire reports, see "To locate the fire report of your choice," in "Using a wildcard to perform a query," in Chapter 3, "Working with wildland fire reports."

- 3 Edit the fire report as appropriate.
- 4 To save your edits, click **Save** on the **File** menu, click **Save** on the **Fire Report** toolbar, or press F10.

At this point, the status of this fire report is "pending." To transfer this fire report, refer back to section, "4. Transferring fire reports to NIFMID."

Troubleshooting tips

The following chart outlines some of the problems you may encounter when using FIRESTAT version 5.4.

The most current troubleshooting tips are available on the Internet at:

<http://www.fs.fed.us/fire/planning/nist>

If you are still unable to fix the problem, email fire_help@dms.nwcg.gov or contact the Fire Applications Helpdesk at (800) 253-5559.

Problem	Solution
I can't save the fire report.	To save a fire report, you must complete <i>at least</i> the following fields: <ul style="list-style-type: none"> • Region/Forest/District ID • SO Fire Number • Ownership/State at Origin • Discovery Date/Time.
I entered the minimum data, but I still can't save the fire report.	Some of the Specific Cause and Class of People codes, when used, keeps FIRESTAT from saving the fire report. Clear the values in both the Specific Cause and Class People fields, and then try saving the fire report. If you are still having difficulties, contact the Fire Applications Helpdesk at (800) 253-5559.
The county code I typed in doesn't work.	You must press CTRL + 1 and select the appropriate county code.
I cannot save the fire report after I entered values in the Township and Range fields.	FIRESTAT will not save your fire report if you do not complete the Township and Range fields as instructed.
I completed and saved a fire report, but when I go back into FIRESTAT, I cannot find it.	You must enter Query mode to locate the saved fire report. First, press F7 to enter query mode. Type the search criteria in the field of your choice. Press F8 to execute the query.

Appendix A. Codes

This appendix contains additional coding information to complete specific fields for FS-5100-29.

4. State and principal meridian codes

Refer to this table when creating and/or editing your local limits.

Code	Meridian name	State	State name
01	1st Principal Meridian	IN	Indiana
01	1st Principal Meridian	OH	Ohio
02	2nd Principal Meridian	IL	Illinois
02	2nd Principal Meridian	IN	Indiana
03	3rd Principal Meridian	IL	Illinois
04	4th Principal Meridian	IL	Illinois
04	4th Principal Meridian	MN	Minnesota
04	4th Principal Meridian	WI	Wisconsin
05	5th Principal Meridian	AR	Arkansas
05	5th Principal Meridian	IA	Iowa
05	5th Principal Meridian	MN	Minnesota
05	5th Principal Meridian	MO	Missouri
05	5th Principal Meridian	ND	North Dakota
05	5th Principal Meridian	SD	South Dakota
06	6th Principal Meridian	CO	Colorado
06	6th Principal Meridian	KS	Kansas
06	6th Principal Meridian	NE	Nebraska
06	6th Principal Meridian	SD	South Dakota
06	6th Principal Meridian	WY	Wyoming
07	Black Hills	SD	South Dakota
08	Boise	ID	Idaho
09	Chicksaw	MS	Mississippi
10	Choctaw	MS	Mississippi
11	Cimarron	OK	Oklahoma
12	Copper River	AK	Alaska
13	Fairbanks	AK	Alaska
14	Gila and Salt River	AZ	Arizona
15	Humbolt	CA	California
16	Huntsville	AL	Alabama

16	Huntsville	MS	Mississippi
17	Indian	OK	Oklahoma
18	Louisiana	LA	Louisiana
19	Michigan	MI	Michigan
20	Principal	MT	Montana
21	Mt. Diablo	CA	California
21	Mt. Diablo	NV	Nevada
22	Navajo	AZ	Arizona
23	New Mexico	CO	Colorado
23	New Mexico	NM	New Mexico
24	St. Helena	LA	Louisiana
25	St. Stephens	AL	Alabama
25	St. Stephens	MS	Mississippi
26	Salt Lake	UT	Utah
27	San Bernardino	CA	California
28	Seward	AK	Alaska
29	Tallahassee	AL	Alabama
29	Tallahassee	FL	Florida
30	Uintah	UT	Utah
31	Ute	CO	Colorado
32	Washington	MS	Mississippi
33	Willamette	WA	Washington
34	Wind River	WY	Wyoming
35	Ohio	OH	Ohio
36	Great Miami River	OH	Ohio
37	Muskingum River	OH	Ohio
38	Ohio River	OH	Ohio
39	1st Scioto River	OH	Ohio
40	2nd Scioto River	OH	Ohio
41	3rd Scioto River	OH	Ohio
42	Ellicotts Line	OH	Ohio
43	12 Mile Square	OH	Ohio
44	Kateel River	AK	Alaska
45	Umiat	AK	Alaska

11. State postal codes

For fires that originate under State, local, or private protection, enter the two-character postal code.

Code	State or other	Code	State or other
AL	Alabama	MT	Montana
AK	Alaska	NE	Nebraska
AZ	Arizona	NV	Nevada
AR	Arkansas	NH	New Hampshire
CA	California	NJ	New Jersey
CO	Colorado	NM	New Mexico
CT	Connecticut	NY	New York
DE	Delaware	NC	North Carolina
DC	District of Columbia	ND	North Dakota
FL	Florida	OH	Ohio
GA	Georgia	OK	Oklahoma
HI	Hawaii	PA	Pennsylvania
ID	Idaho	PR	Puerto Rico
IL	Illinois	RI	Rhode Island
IN	Indiana	SC	South Carolina
IA	Iowa	SD	South Dakota
KS	Kansas	TN	Tennessee
KY	Kentucky	TX	Texas
LA	Louisiana	UT	Utah
ME	Maine	VT	Vermont
MD	Maryland	VI	Virgin Islands
MA	Massachusetts	VA	Virginia
MX	Mexico	WA	Washington
MI	Michigan	WV	West Virginia
MN	Minnesota	WI	Wisconsin
MS	Mississippi	WY	Wyoming
MO	Missouri		

17. Detection Method

Select the code that corresponds to the initial detection method.

Code	Detected by
1	Forest Service Lookout
2	Other Lookout
4	Forest Service Patrol
4	Other Forest Service Employee
5	Planned Cooperator (with who fire control cooperative arrangement exists, excluding aircraft)
6	Forest service Permittee (persons holding special use, free use, or grazing permits; timber sales and other contracts; their agents and employees)
7	Forest Service Aircraft Observer
8	Other Aircraft Observer
9	Infrared Detection
0	Other

18-21 Statistical/General/Specific Cause/Class of People

Statistical Cause

Select the codes that best describe the actual fire cause.

Code	Description
1	Lightning
2	Equipment Use
3	Smoking
4	Campfire
5	Debris Burning
6	Railroad
7	Arson
8	Children
9	Miscellaneous

General Cause

Select the appropriate general cause code to identify the human activity related to the fire ignition. Enter 0 (other) for unknown activities and lightning fires.

Code	Description
1	Timber harvest
2	Harvest other products
3	Forest/Range management activities
4	Highway
5	Power, reclamation
6	Hunting
7	Fishing
8	Other recreation
9	Resident
0	Other

Specific Cause

Select the appropriate specific cause code to further identify the cause of the fire. Enter 30 (other) for any unknown cause.

Code	Description	Code	Description
01	Lightning	16	Right-of-way burning
02	Aircraft	17	Resource management burning
03	Burning vehicle	18	Grudge fire
04	Exhaust-powersaw	19	Pyromania
05	Exhaust-other	20	Smoking out bees or game
06	Logging line	21	Insect/snake control
07	Brakeshoe	22	Job fire
08	Cooking fire	23	Blasting
09	Warming fire	24	Burning building
10	Smoking	25	Powerline
11	Trash burning	26	Fireworks
12	Burning dump	27	Playing with matches
13	Field burning	28	Repel predatory animals
14	Land clearing	29	Stove fuel sparks
15	Slash burning	30	Other

Class of People

Select the appropriate class of people code to identify the person or group involved with a human-caused fire. For lightning fires, enter 0 (not person-caused). For persons whose status cannot be determined, enter 8 (other).

Code	Description
1	Owner
2	Permittee
3	Contractor
4	Public employee
5	Local permanent
6	Seasonal
7	Transient
8	Other
9	Visitor
0	Not person-caused

27. Forces Used Up to Time of Attainment of Initial Strategy or Escape

Select the resource codes, agencies, and the quantities of the suppression forces used up until the initial selected suppression strategy was attained. Complete as many boxes as appropriate to adequately describe the forces used.

Do not enter data on aircraft other than for air tankers and helicopters that were used to drop water or retardant. Note that ICS types do not distinguish between permanent tanks and external buckets for helicopters.

List individual components or strike teams. Do not count personnel who are included in an ICS module. For example, if a D1 code is selected for a type 1 dozer, do not code the two accompanying personnel as separate individuals.

Select **P1** for non-ICS type crews. Enter the number of persons for each type in the quantity field. If more forces were used than space permits for data entry, consolidate forces by type. For smoke jumpers, helitack, and rappel personnel delivered by aircraft, select **P2**, **P3**, or **P4** as appropriate. However, for firefighters such as smoke jumpers delivered to a fire by ground vehicle, select **P1**.

Type engines based on tank, size, pump capacity, hoses, and other factors. Describe tank size in gallons and pump capacity in gallons per minute, separated by a slash. Select **M1** to record water tenders. Most water tenders do not qualify as engines under ICS rules due to pump size, hose capacity, and other factors.

Code	Class of Forces	ICS Type	Unit of Measure	Description
A1	Air Tanker	1	each aircraft	3000 gallon
A2		2		1800 gallon
A3		3		600 gallon
A4		4		100 gallon
H1	Helicopter	1	each aircraft	700 gallon
H2		2		300 gallon
H3		3		100 gallon
H4		4		75 gallon
E1	Engine (with crew)	1	each module	1-400 g/1000 gpm
E2		2		2-400 g/500 gpm
E3		3		3-300 g/500 gpm
E4	4	4		4-750 g/70 gpm
E5		5		5-500 g/50 gpm
E6		6		6-200 g/50 gpm
E7		7		7-125 g/20 gpm
E9	Patrol	-		
D1	Dozer/Plow (with crew)	1	each module	170 HP
D2		2		93 HP
D3		3		65 HP
C1	Crew (Category 1)	1	each crew	
C2	Crew (Category 2)	2		
P1	Suppression Pers. (Misc.)	-	each person	
P2	Smoke jumper (via para.)	-		
P3	Helitack (via heli.)	-		
P4	Rappeller (via heli.)	-		
M1	Misc., not listed above	-	not applicable	

After each Class of Forces code, select **F** for Forest Service or **C** for all other cooperators, and then enter the quantity. If the quantity for a single block exceeds 99, enter **99**.

If no forces were used (confinement/surveillance), enter **M1/F/99**.

28. FFF Cost

Type the estimated total emergency Fire Fighting Funds (FFF), in whole dollars, expended by the Forest Service as a result of this fire.

For a natural prescribed fire that changes to wildfire, include both GG and PP costs.

For smaller fires, develop costs based on current wage rates and approximate hours charged and equipment contract or use rates.

For project fires, use estimated FFF costs from the final Incident Status Summary, form FS-5100-11.

33. FMZ NVC per Acre (whole \$)

Type the average per acre net resource value change (NVC), in whole dollars, developed for the National Fire Management Analysis System (NFMAS) planning for the Fire Management Zone (FMZ) and the predominant fire intensity level in which the fire burned.

Enter damages (losses) as a positive number and benefits as a negative number. Do not recalculate nor include fire effects or NVC for this specific fire. If the fire occurred on non-National Forest and the Fire Management Zone is "9999," enter 0 (zero).

When fire burns significant acreage in each of two or more FMZs, calculate and enter a weighted average per acre NVC based on the NFMAS average NVC and the acreage burned in each. Forests that have not developed NVC tables for NFMAS must obtain and use NVC data applicable to the area from the National Forest(s) that represent them.

34. Fire Intensity Level

Select the appropriate fire intensity level (FIL) code for the predominant or typical sustained average flame length observed at the head of the fire during the initial attack.

36. NFDRS Fuel Model/Cover Type

NFDRS Fuel Model

Select the appropriate one-character code of the prevailing NFDRS fuel model where the fire was burning at the same time and place where the Fire Intensity Level was observed.

Code	Description
A	Annual grasses
B	Mature brush
C	Open pine with grass
D	Southern rough
E	Hardwood litter (fall)
F	Intermountain west brush
G	West coast conifers
H	Short needle conifers
I	Heavy slash
J	Intermediate slash
K	Light slash
L	Perennial grasses
N	Saw/march grasses
O	High pocosin
P	Southern long-needle pine
Q	Alaska black spruce
R	Hardwood litter (summer)
S	Tundra
T	Sagebrush with grass
U	Western long-leaf pine.

To designate fires burning in non-vegetative fuels where there is a significant separation from wildland fuels, including burning buildings and vehicles on paved roadways, select **X**.

Cover Type

Select the appropriate two-digit code of the regional vegetation cover type where the fire burned during the initial attack.

41. Special Code

Select the appropriate Special Codes for information not recorded elsewhere on the form. Complete as many boxes as appropriate.

Code	Definition	Description and action to be taken
IG	Ignition sites. The number of multiple ignition points within the fire perimeter. (optional)	Type the number of separate ignitions that are contained within the fire perimeter. Use this code only when the number of separate ignitions is more than one.
PP	Fire Accounting Project Code. PP ties the fire report to the FS fire accounting code assigned to one or more fires. (required for all D class and larger fires; recommended for all fires)	Type the five-digit value. Exclude the leading "P" or "R." For example, if the accounting code assigned to the fire is P71503, select PP , and then type 71503 . Use this code for fires assigned a reimbursable account. Up to four accounting codes are allowed to handle situations where several accounting codes are used over the life of the fire. You can also select accounting codes for other agencies.
WL	Wilderness area. A fire burning in designated wilderness areas.	Select the three-digit wilderness code. For example, to code a fire in the Bob Marshall wilderness area, select WL and then type 049 . <i>Use this code only for fires that occur within wilderness boundaries designated by Congress.</i>
ZA	Fire size when declared a wildfire. The fire size in acres when a prescribed natural fire was declared a wildfire.	Type the fire size in whole acres when the prescribed fire was declared a wildfire. For example, if a fire was 0.4 acres, type 0 (zero). If the fire was 1023 acres, type 1023 . If a fire was greater than 99,999 acres, type 99999 .
ZC	Date declared contained. The month and day a prescribed fire (either natural or management ignited) was declared contained.	Type the two-digit month and two-digit-day the fire was contained, in the format MMDD. The default time is "1200." For example, if a fire was contained on August 19th, type 0819 . The year is determined using other data fields.
ZD	Total resource damage in ten thousand dollar increments. The total resource damage on National Forest System Lands determined by analysis.	Type the total resource damage determined by analysis, in \$10,000 increments. For example, if a fire damages \$4,999 in resources, type 0 (zero). If a fire damaged \$10,000,000 type 1000 . The maximum codable value is \$999.99 million, types as 99999 . Use this code only for large fires that have significant resource damage.

ZW	Data declared wildfire. The month and day a prescribed fire (either natural or management ignited) was declared a wildfire.	Type the two-digit month and two-digit-day the fire was contained, in the format MMDD. The default time is "1200." For example, if a fire was declared a wildfire on August 19th, type 0819 . The year is determined using other data fields.
----	---	---

Do not substitute local codes for the national codes defined in this section. National codes are defined so that local units can collect data in a consistent manner.

To define special codes for Regional or local use, send a definition of the code and related values to your national FIRESTAT support personnel to fire_help@dms.nwcg.gov.

County codes by state

The county codes below are listed in alphabetical order by state.

For State Code= 01 - Alabama

State	County	County Name	State	County	County Name
AL	001	Autauga	AL	069	Houston
AL	003	Baldwin	AL	071	Jackson
AL	005	Barbour	AL	073	Jefferson
AL	007	Bibb	AL	075	Lamar
AL	009	Blount	AL	077	Lauderdale
AL	011	Bullock	AL	079	Lawrence
AL	013	Butler	AL	081	Lee
AL	015	Calhoun	AL	083	Limestone
AL	017	Chambers	AL	085	Lowndes
AL	019	Cherokee	AL	087	Macon
AL	021	Chilton	AL	089	Madison
AL	023	Choctaw	AL	091	Nfarengo
AL	025	Clarke	AL	093	Marion
AL	027	Clay	AL	095	Marshall
AL	029	Cleburne	AL	097	Mobile
AL	031	Coffee	AL	099	Monroe
AL	033	Colbert	AL	101	Montgomery
AL	035	Conecuh	AL	103	Morgan
AL	037	Coosa	AL	105	Perry
AL	039	Covington	AL	107	Pickens
AL	041	Crenshaw	AL	109	Pike
AL	043	Cullman	AL	111	Randolph
AL	045	Dale	AL	113	Russell
AL	047	Dallas	AL	115	Saint Clair
AL	049	De Kalb	AL	117	Shelby
AL	051	Elmore	AL	119	Sumter
AL	053	Escambia	AL	121	Talladega
AL	055	Etowah	AL	123	Tallapoosa
AL	057	Fayette	AL	125	Tuscaloosa
AL	059	Franklin	AL	127	Walker
AL	061	Geneva	AL	129	Washington
AL	063	Greene	AL	131	Wilcox
AL	065	Hale	AL	133	Winston
AL	067	Henry			

For State Code = 02 - Alaska

State	County	County Name	State	County	County Name
AK	013	Aleutians East	AK	170	Matanuska-Susitna
AK	016	Aleutians West	AK	180	Nome
AK	020	Anchorage	AK	185	North Slope
AK	050	Bethel	AK	188	Northwest Artic
AK	060	Bristol Bay	AK	201	Prince of Wales-Oute
AK	070	Dillingham	AK	220	Sitka
AK	090	Fairbanks North Star	AK	231	Skagway-Yakutat-Ango
AK	100	Haines	AK	240	Southeast Fairbanks
AK	110	Juneau	AK	261	Valdez-Cordova
AK	122	Kenai Peninsula	AK	270	Wade Hampton
AK	130	Ketchikan Gateway	AK	280	Wrangell-Petersburg
AK	150	Kodiak Island	AK	290	Yukon-Koyukuk
AK	164	Lake and Peninsula			

For State Code = 04 - Arizona

State	County	County Name	State	County	County Nome
AZ	001	Apache	AZ	015	Mohave
AZ	003	Cochise	AZ	017	Navajo
AZ	005	Coconino	AZ	019	Pima
AZ	007	Gila	AZ	021	Pinal
AZ	009	Graham	AZ	023	Santa Cruz
AZ	011	Greenlee	AZ	025	Yavapai
AZ	012	La Paz	AZ	027	Yuma
AZ	013	Maricopa			

For State Code = 05 - Arkansas

State	County	County Name	State	County	County Name
AR	001	Arkansas	AR	077	Lee
AR	003	Ashley	AR	079	Lincoln
AR	005	Baxter	AR	081	Little River
AR	007	Benton	AR	083	Logan
AR	009	Boone	AR	085	Lonoke
AR	011	Bradley	AR	087	Madison
AR	013	Calhoun	AR	089	Marion
AR	015	Carroll	AR	091	Miller

AR	017	Chicot	AR	093	Mississippi
AR	019	Clark	AR	095	Monroe
AR	021	Clay	AR	097	Montgomery
AR	023	Cleburne	AR	099	Nevada
AR	025	Cleveland	AR	101	Newton
AR	027	Columbia	AR	103	Ouachita
AR	029	Conway	AR	105	Perry
AR	031	Craighead	AR	107	Phillips
AR	033	Crawford	AR	109	Pike
AR	035	Crittenden	AR	111	Poinsett
AR	037	Cross	AR	113	Polk
AR	039	Dallas	AR	115	Pope
AR	041	Desha	AR	117	Prairie
AR	043	Drew	AR	119	Pulaski
AR	045	Faulkner	AR	121	Randolph
AR	047	Franklin	AR	123	Saint Francis
AR	049	Fulton	AR	125	Saline
AR	051	Garland	AR	127	Scott
AR	053	Grant	AR	129	Searcy
AR	055	Greene	AR	131	Sebastian
AR	057	Hempstead	AR	133	Sevier
AR	059	Hot Spring	AR	135	Sharp
AR	061	Howard	AR	137	Stone
AR	063	Independence	AR	139	Union
AR	065	Izard	AR	141	Van Buren
AR	067	Jackson	AR	143	Washington
AR	069	Jefferson	AR	145	White
AR	071	Johnson	AR	147	Woodruff
AR	073	Lafayette	AR	149	Yell
AR	075	Lawrence			

For State Code = 06 - California

State	County	County Name	State	County	County Name
CA	001	Alameda	CA	059	Orange
CA	003	Alpine	CA	061	Placer
CA	005	Amador	CA	063	Plumas
CA	007	Butte	CA	065	Riverside
CA	009	Calaveras	CA	067	Sacramento
CA	011	Colusa	CA	069	San Benito
CA	013	Contra Costa	CA	071	San Bernardino
CA	015	Del Norte	CA	073	San Diego
CA	017	El Dorado	CA	075	San Francisco
CA	019	Fresno	CA	077	San Joaquin
CA	021	Glenn	CA	079	San Luis Obispo
CA	023	Humboldt	CA	081	San Mateo
CA	025	Imperial	CA	083	Santa Barbara
CA	027	Inyo	CA	085	Santa Clara
CA	029	Kern	CA	087	Santa Cruz
CA	031	Kings	CA	089	Shasta
CA	033	Lake	CA	091	Sierra
CA	035	Lassen	CA	093	Siskiyou.
CA	037	Los Angeles	CA	095	Solano
CA	039	Madera	CA	097	Sonoma
CA	041	Marin	CA	099	Stanislaus
CA	043	Mariposa	CA	101	Sutter
CA	045	Mendocino	CA	103	Tehama
CA	047	Merced	CA	105	Trinity
CA	049	Modoc	CA	107	Tulare
CA	051	Mono	CA	109	Tuolumne
CA	053	Monterey	CA	111	Ventura
CA	055	Napa	CA	113	Yolo
CA	057	Nevada	CA	115	Yuba

For State Code = 08 - Colorado

State	County	County Name	State	County	County Name
CO	001	Adams	CO	065	Lake
CO	003	Alamosa	CO	067	La Plata
CO	005	Arapahoe	CO	069	Larimer
CO	007	Archuleta	CO	071	Las Animas
CO	009	Baca	CO	073	Uncoln
CO	011	Bent	CO	075	Logan
CO	013	Boulder	CO	077	Mesa
CO	015	Chaffee	CO	079	Mineral
CO	017	Cheyenne	CO	081	Moffat
CO	019	Clear Creek	CO	083	Montezuma
CO	021	Conejos	CO	085	Montrose
CO	023	Costilla	CO	087	Morgan
CO	025	Crowley	CO	089	Otero
CO	027	Custer	CO	091	Ouray
CO	029	Delta	CO	093	Park
CO	031	Denver	CO	095	Phinips
CO	033	Dolores	CO	097	Pitkin
CO	035	Douglas	CO	099	Prowers
CO	037	Eagle	CO	101	Pueblo
CO	039	Elbert	CO	103	Rio Blanco
co	041	El Paso	CO	105	Rio Grande
CO	043	Fremont	CO	107	Routt
CO	045	Garfield	CO	109	Saguache
CO	047	Gilpin	CO	111	San Juan
CO	049	Grand	CO	113	San Miguel
CO	051	Gunnison	CO	115	Sedgwick
CO	053	Hinsdale	CO	117	Summit
CO	055	Huerfano	CO	119	Teller
CO	057	Jackson	CO	121	Washington
CO	059	Jefferson	CO	123	Weld
CO	061	Kiowa	CO	125	Yuma
CO	063	Kit Carson			

For State Code = 09 - Connecticut

State	County	County Name	State	County	County Name
CT	001	Fairfield	CT	009	New Haven
CT	003	Hartford	CT	011	New London
CT	005	Litchfield	CT	013	Tolland
CT	007	Middlesex	CT	015	Windham

For State Code = 10 - Delaware

State	County	County Name	State	County	County Name
DE	001	Kent	DE	005	Sussex
DE	003	New Castle			

For State Code = 11 - Washington, D.C.

State	County	County Name	State	County	County Name
DC	001	District of Columbia			

For State Code = 12 - Florida

State	County	County Name	State	County	County Name
FL	001	Alachua	FL	069	Lake
FL	003	Baker	FL	071	Lee
FL	005	Bay	FL	073	Leon
FL	007	Bradford	FL	075	Levy
FL	009	Brevard	FL	077	Liberty
FL	011	Broward	FL	079	Madison
FL	013	Calhoun	FL	081	Manatee
FL	015	Charlotte	FL	083	Marion
FL	017	Citrus	FL	085	Martin
FL	019	Clay	FL	087	Monroe
FL	021	Collier	FL	089	Nassau
FL	023	Columbia	FL	091	Okaloosa
FL	025	Dade	FL	093	Okeechobee
FL	027	De Soto	FL	095	Orange
FL	029	Dixie	FL	097	Osceola
FL	031	Duval	FL	099	Palm Beach
FL	033	Escambia	FL	101	Pasco
FL	035	Flagler	FL	103	Pinellas
FL	037	Franklin	FL	105	Polk

FL	039	Gadsden	FL	107	Putnam
FL	041	Gilchrist	FL	109	Saint Johns
FL	043	Glades	FL	111	Saint Lucie
FL	1045	Gulf	FL	113	Santa Rosa
FL	047	Hamilton	FL	115	Sarasota
FL	049	Hardee	FL	117	Seminole
FL	051	Hendry	FL	119	Sumter
FL	053	Hernando	FL	121	Suwannee
FL	055	Highlands	FL	123	Taylor
FL	057	Hillsborough	FL	123	Union
FL	059	Holmes	FL	127	Volusia
FL	061	Indian River	FL	129	Wakulla
FL	063	Jackson	FL	131	Walton
FL	065	Jefferson	FL	133	Washington
FL	067	Lafayette			

For State Code = 13 - Georgia

State	County	County Name	State	County	County Name
GA	001	Appling	GA	163	Jefferson
GA	003	Atkinson	GA	165	Jenkins
GA	005	Bacon	GA	167	Johnson
GA	007	Baker	GA	169	Jones
GA	009	Baldwin	GA	171	Lamar
GA	011	Banks	GA	173	Lanier
GA	013	Barrow	GA	175	Laurens
GA	015	Bartow	GA	177	Lee
GA	017	Ben Hill	GA	179	Liberty
GA	019	Berrien	GA	181	Lincoln
GA	021	Bibb	GA	183	Long
GA	023	Bleckley	GA	185	Lowndes
GA	025	Brantley	GA	187	Lumpkin
GA	027	Brooks	GA	189	McDuffie
GA	029	Bryan	GA	191	McIntosh
GA	031	Bulloch	GA	193	Macon
GA	033	Burke	GA	195	Madison
GA	035	Butts	GA	197	Marion
GA	037	Calhoun	GA	199	Meriwether
GA	039	Camden	GA	201	Miller
GA	043	Candler	GA	205	Mitchell
GA	045	Carroll	GA	207	Monroe
GA	047	Catoosa	GA	209	Montgomery
GA	049	Chariton	GA	211	Morgan
GA	051	Chatham	GA	213	Murray
GA	053	Chattahoochee	GA	215	Muscogee
GA	055	Chattooga	GA	217	Newton
GA	057	Cherokee	GA	219	Oconee
GA	059	Clarke	GA	221	Oglethorpe
GA	061	Clay	GA	223	Paulding
GA	063	Clayton	GA	225	Peach
GA	065	Clinch	GA	227	Pickens
GA	067	Cobb	GA	229	Pierce
GA	069	Coffee	GA	231	Pike
GA	071	Colquitt	GA	233	Polk

GA	073	Columbia	GA	235	Pulaski
GA	075	Cook	GA	237	Putnam
GA	077	Coweta	GA	239	Quitman
GA	079	Crawford	GA	241	Rabun
GA	081	Crisp	GA	243	Randolph
GA	083	Dade	GA	245	Richmond
GA	085	Dawson	GA	247	Rockdale
GA	087	Decatur	GA	249	Schley
GA	089	DeKalb	GA	251	Screven
GA	091	Dodge	GA	253	Seminole
GA	093	Dooly	GA	255	Spalding
GA	093	Dougherty	GA	257	Stephens
GA	097	Douglas	GA	259	Stewart
GA	099	Early	GA	261	Sumter
GA	101	Echols	GA	263	Talbot
GA	103	Effingham	GA	265	Taliaferro
GA	105	Elbert	GA	267	Tattnall
GA	107	Emanuel	GA	269	Taylor
GA	109	Evans	GA	271	Telfair
GA	111	Fannin	GA	273	Terrell
GA	113	Fayette	GA	275	Thomas
GA	115	Floyd	GA	277	Tift
GA	117	Forsyth	GA	279	Toombs
GA	119	Franklin	GA	281	Towns
GA	121	Fulton	GA	283	Treutlen
GA	123	Gilmer	GA	285	Troup
GA	125	Glacocock	GA	287	Turner
GA	127	Glynn	GA	289	Twiggs
GA	129	Gordon	GA	291	Union
GA	131	Grady	GA	293	Upton
GA	133	Greene	GA	295	Walker
GA	135	Gwinnett	GA	297	Walton
GA	137	Habersham	GA	299	Ware
GA	139	Hall	GA	301	Warren
GA	141	Hancock	GA	303	Washington
GA	143	Haralson	GA	305	Wayne
GA	145	Harris	GA	307	Webster
GA	147	Hart	GA	309	Wheeler

GA	149	Heard	GA	311	White
GA	151	Henry	GA	313	Whitfield
GA	153	Houston	GA	315	Wilcox
GA	155	Irwin	GA	317	Wilkes
GA	157	Jackson	GA	319	Wilkinson
GA	159	Jasper	GA	321	Worth
GA	161	Jeff Davis			

For State Code = 15 - Hawaii

State	County	County Name	State	County	County Name
HI	001	Hawaii	HI	007	Kauai
HI	003	Honolulu	HI	009	Maui
HI	005	Kalawao			

For State Code = 16 - Idaho

State	County	County Name	State	County	County Name
ID	001	Ada	ID	045	Gem
ID	003	Adams	ID	047	Gooding
ID	005	Bannock	ID	049	Idaho
ID	007	Bear Lake	ID	051	Jefferson
ID	009	Benewah	ID	053	Jerome
ID	011	Bingham	ID	055	Kootenai
ID	013	Blaine	ID	057	Latah
ID	015	Boise	ID	059	Lemhi
ID	017	Bonner	ID	061	Lewis
ID	019	Bonneville	ID	063	Lincoln
ID	021	Boundary	ID	065	Madison
ID	023	Butte	ID	067	Minidoka
ID	025	Camas	ID	069	Nez Perce
ID	027	Canyon	ID	071	Oneida
ID	029	Caribou	ID	073	Owyhee
ID	031	Cassia	ID	075	Payette
ID	033	Clark	ID	077	Power
ID	035	Clearwater	ID	079	Shoshone
ID	037	Custer	ID	081	Teton
ID	039	Elmore	ID	083	Twin Falls
ID	041	Franklin	ID	085	Valley
ID	043	Fremont	ID	087	Washington

For State Code = 17 - Illinois

State	County	County Name	State	County	County Name
IL	001	Adams	IL	103	Lee
IL	003	Alexander	IL	105	Livingston
IL	005	Bond	IL	107	Logan
IL	007	Boone	IL	109	McDonough

IL	009	Brown	IL	111	McHenry
IL	011	Bureau	IL	113	McLean
IL	013	Calhoun	IL	115	Macon
IL	015	Carroll	IL	117	Macoupin
IL	017	Cass	IL	119	Madison
IL	019	Champaign	IL	121	Marion
IL	021	Christian	IL	123	Marshall
IL	023	Clark	IL	125	Mason
IL	025	Clay	IL	127	Massac
IL	027	Clinton	IL	129	Menard
IL	029	Coles	IL	131	Mercer
IL	031	Cook	IL	133	Monroe
IL	033	Crawford	IL	135	Montgomery
IL	035	Cumberland	IL	137	Morgan
IL	037	De Kalb	IL	139	Moultrie
IL	039	De Witt	IL	141	Ogle
IL	041	Douglas	IL	143	Peoria
IL	043	Du Page	IL	145	Perry
IL	045	Edgar	IL	147	Piatt
IL	047	Edwards	IL	149	Pike
IL	049	Effingham	IL	151	Pope
IL	051	Fayette	IL	153	Pulaski
IL	053	Ford	IL	155	Putnam
IL	055	Franklin	IL	157	Randolph
IL	057	Fulton	IL	159	Richland
IL	059	Gallatin	IL	161	Rock Island
IL	061	Greene	IL	163	Saint Clair
IL	063	Grundy	IL	165	Saline
IL	065	Hamilton	IL	167	Sangamon
IL	067	Hancock	IL	169	Schuyler
IL	069	Hardin	IL	171	Scott
IL	071	Henderson	IL	173	Shelby
IL	073	Henry	IL	175	Stark
IL	075	Iroquois	IL	177	Stephenson
IL	077	Jackson	IL	179	Tazewell
IL	079	jasper	IL	181	Union
IL	081	Jefferson	IL	183	Vermilion
IL	083	Jersey	IL	185	Wabash

IL	085	Jo Daviess	IL	187	Warren
IL	087	Johnson	IL	189	Washington
IL	089	Kane	IL	191	Wayne
IL	091	Kankakee	IL	193	White
IL	093	Kendall	IL	195	Whiteside
IL	095	Knox	IL	197	Will
IL	097	Lake	IL	199	Williamson
IL	099	La Salle	IL	201	Winnebago
IL	101	Lawrence	IL	203	Woodford

For State Code = 18 - Indiana

State	County	County Name	State	County	County Name
IN	001	Adams	IN	093	Lawrence
IN	003	Allen	N	095	Madison
IN	005	Bartholomew	IN	097	Marion
IN	007	Benton	IN	099	Marshall
IN	009	Blackford	N	101	Martin
IN	011	Boone	IN	103	Miami
IN	013	Brown	IN	105	Monroe
IN	015	Carroll	N	107	Montgomery
IN	017	Cass	IN	109	Morgan
IN	019	Clark	IN	111	Newton
IN	021	Clay	IN	113	Noble
IN	023	Clinton	IN	115	Ohio
N	025	Crawford	IN	117	Orange
IN	027	Daviess	IN	119	Owen
IN	029	Dearborn	IN	121	Parke
IN	031	Decatur	IN	123	Perry
IN	033	De Kalb	IN	125	Pike
IN	035	Delaware	IN	127	Porter
IN	037	Dubois	IN	129	Posey
IN	039	Elkhart	IN	131	Pulaski
IN	041	Fayette	IN	133	Putnam
IN	043	Floyd	IN	135	Randolph
IN	045	Fountain	IN	137	Ripley
IN	047	Franklin	IN	139	Rush
IN	049	Fulton	IN	141	Saint Joseph
IN	051	Gibson	IN	143	Scott
IN	053	Grant	IN	145	Shelby
IN	055	Greene	N	147	Spencer
IN	057	Hamilton	IN	149	Starke
IN	059	Hancock	IN	151	Steuben
IN	061	Harrison	IN	153	Sullivan
IN	063	Hendricks	IN	155	Switzerland
IN	065	Henry	IN	157	Tippecanoe
IN	067	Howard	IN	159	Tipton
IN	069	Huntington	IN	161	Union

IN	071	Jackson	IN	163	Vanderburgh
IN	073	Jasper	IN	165	Vermillion
IN	075	Jay	IN	167	Vigo
N	077	Jefferson	IN	169	Wabash
IN	079	Jennings	IN	171	Warren
IN	081	Johnson	IN	173	Warrick
IN	083	Knox	N	17	Washington
IN	085	Kosciusko	IN	177	Wayne
IN	087	Lagrange	IN	179	Wells
IN	089	Lake	IN	181	White
IN	091	La Porte	IN	183	Whitley

For State Code = 19 - Iowa

State	County	County Name	State	County	County Name
IA	001	Adair	IA	101	Jefferson
IA	003	Adams	IA	103	Johnson
IA	005	Allamakee	IA	105	Jones
IA	007	Appanoose	IA	107	Keokuk
IA	009	Audubon	IA	109	Kossuth
IA	011	Benton	IA	111	Lee
IA	013	Black Hawk	IA	113	Linn
IA	015	Boone	IA	115	Louisa
IA	017	Bremer	IA	117	Lucas
IA	019	Buchanan	IA	119	Lyon
IA	021	Buena Vista	IA	121	Madison
IA	023	Butler	IA	123	Mahaska
IA	025	Calhoun	IA	125	Marion
IA	027	Carroll	IA	127	Marshall
IA	029	Cass	IA	129	Mills
IA	031	Cedar	IA	131	Mitchell
IA	033	Cerro Gordo	IA	133	Monona
IA	035	Cherokee	IA	135	Monroe
IA	037	Chickasaw	IA	137	Montgomery
IA	039	Clarke	IA	139	Muscatine
IA	041	Clay	IA	141	O'Brien
IA	043	Clayton	IA	143	Osceola
IA	045	Clinton	IA	145	Page
IA	047	Crawford	IA	147	Palo Alto
IA	049	Dallas	IA	149	Plymouth
IA	051	Davis	IA	151	Pocahontas
IA	053	Decatur	IA	153	Polk
IA	055	Delaware	IA	155	Pottawattamie
IA	057	Des Moines	IA	157	Poweshiek
IA	059	Dickinson	IA	159	Ringgold
IA	061	Dubuque	IA	161	Sac
IA	063	Emmet	IA	163	Scott
IA	065	Fayette	IA	165	Shelby
IA	067	Floyd	IA	167	Sioux
IA	069	Franklin	IA	169	Story

IA	071	Fremont	IA	171	Tama
IA	073	Greene	IA	173	Taylor
IA	075	Grundy	IA	175	Union
IA	077	Guthrie	IA	177	Van Buren
IA	079	Hamilton	IA	179	Wapello
IA	081	Hancock	IA	181	Warren
IA	083	Hardin	IA	183	Washington
IA	085	Harrison	IA	185	Wayne
IA	087	Henry	IA	187	Webster
IA	089	Howard	IA	189	Winnebago
IA	091	Humboldt	IA	191	Winneshiek
IA	093	Ida	IA	193	Woodbury
IA	095	Iowa	IA	195	Worth
IA	097	Jackson	IA	197	Wright
IA	099	Jasper			

For State Code = 20 - Kansas

State	County	County Name	State	County	County Name
KS	001	Allen	KS	107	Linn
KS	003	Anderson	KS	109	Logan
KS	005	Atchison	KS	111	Lyon
KS	007	Barber	KS	113	McPherson
KS	009	Barton	KS	115	Manon
KS	011	Bourbon	KS	117	Marshall
KS	013	Brown	KS	119	Meade
KS	015	Butler	KS	121	Miami
KS	017	Chase	KS	123	Mitchell
KS	019	Chautauqua	KS	125	Montgomery
KS	021	Cherokee	KS	127	Morris
KS	023	Cheyenne	KS	129	Morton
KS	025	Clark	KS	131	Nemaha
KS	027	Clay	KS	133	Neosho
KS	029	Cloud	-KS	135	Ness
KS	031	Coffey	KS	137	Norton
KS	033	Comanche	KS	139	Osage
KS	035	Cowley	KS	141	Osborne
KS	037	Crawford	KS	143	Ottawa
KS	039	Decatur	KS	145	Pawnee
KS	041	Dickinson	KS	147	Phillips
KS	043	Doniphan	KS	149	Pottawatomie
KS	045	Douglas	KS	151	Pratt
KS	047	Edwards	KS	153	Rawlins
KS	049	Elk	KS	155	Reno
KS	051	Ellis	KS	157	Republic
KS	033	Ellsworth	KS	159	Rice
KS	055	Finney	KS	161	Riley
KS	057	Ford	KS	163	Rook.
KS	059	Franklin	KS	165	Rush
KS	061	Geary	KS	167	Russell
KS	063	Gove	KS	169	Saline
KS	065	Graham	KS	171	Scott
KS	067	Grant	KS	173	Sedgwick
KS	069	Gray	KS	175	Seward

KS	071	Greeley	KS	177	Shawnee
KS	073	Greenwood	KS	179	Sheridan
KS	075	Hamilton	KS	181	Sherman
KS	077	Harper	KS	183	Smith
KS	079	Harvey	KS	183	Stafford
KS	081	Haskell	KS	187	Stanton
KS	083	Hodgeman	KS	189	Stevens
KS	085	Jackson	KS	191	Sumner
KS	087	Jefferson	KS	193	Thomas
KS	089	Jewell	KS	195	Trego
KS	091	Johnson	KS	197	Wabaunsee
KS	093	Kearny	KS	199	Wallace
KS	095	Kingman	KS	201	Washington
KS	097	Kiowa	KS	203	Wichita
KS	099	Labette	KS	205	Wilson
KS	101	Lane	KS	207	Woodson
KS	103	Leavenworth	KS	209	Wyandotte
KS	105	Lincoln			

For State Code = 21 - Kentucky

State	County	County Name	State	County	County Name
KY	001	Adair	KY	121	Knox
KY	003	Allen	KY	123	Larue
KY	005	Anderson	KY	125	Laurel
KY	007	Ballard	KY	127	Lawrence
KY	009	Barren	KY	129	Lee
KY	011	Bath	KY	131	Leslie
KY	013	Bell	KY	133	Letcher
KY	015	Boone	KY	135	Lewis
KY	017	Bourbon	KY	137	Lincoln
KY	019	Boyd	KY	139	Livingston
KY	021	Boyle	KY	141	Logan
KY	023	Bracken	KY	143	Lyon
KY	025	Breathitt	KY	145	McCracken
KY	027	Breckinridge	KY	147	McCreary
KY	029	Bullitt	KY	149	McLean
KY	031	Butler	KY	151	Madison
KY	033	Caldwell	KY	153	Magoffin
KY	035	Calloway	KY	155	Manon
KY	037	Campbell	KY	157	Marshall
KY	039	Carlisle	KY	159	Martin
KY	041	Carroll	KY	161	Mason
KY	043	Carter	KY	163	Meade
KY	045	Casey	KY	165	Menifee
KY	047	Christian	KY	167	Mercer
KY	049	Clark	KY	169	Metcalfe
KY	051	Clay	KY	171	Monroe
KY	053	Clinton	KY	173	Montgomery
KY	055	Crittenden	KY	175	Morgan
KY	057	Cumberland	KY	177	Muhlenberg
KY	059	Daviess	KY	179	Nelson
KY	061	Edmonson	KY	181	Nicholas
KY	063	Elliott	KY	183	Ohio
KY	065	Estill	KY	185	Oldham
KY	067	Fayette	KY	187	Owen
KY	069	Fleming	KY	189	Owsley

KY	071	Floyd	KY	191	Pendleton
KY	073	Franklin	KY	193	Perry
KY	075	Fulton	KY	195	Pike
KY	077	Gallatin	KY	197	Powell
KY	079	Garrard	KY	199	Pulaski
KY	081	Grant	KY	201	Robertson
KY	083	Graves	KY	203	Rockcastle
KY	085	Grayson	KY	205	Rowan
KY	087	Green	KY'	207	Russell
KY	089	Greenup	KY	209	Scott
KY	091	Hancock	KY	211	Shelby
KY	093	Hardin	KY	213	Simpson
KY	095	Harlan	KY	215	Spencer
KY	097	Harrison	KY	217	Taylor
KY	099	Hart	KY	219	Todd
KY	101	Henderson	KY	221	Trigg
KY	103	Henry	KY	223	Trimble
KY	105	Hickman	KY	225	Union
KY	107	Hopkins	KY	227	Warren
KY	109	Jackson	KY	229	Washington
KY	111	Jefferson	KY	231	Wayne
KY	113	Jessamine	KY	233	Webster
KY	115	Johnson	KY	235	Whitley
KY	117	Kenton	KY	237	Wolfe
KY	119	Knott	KY	239	Woodford

For State Code = 22 - Louisiana

State	County	County Name	State	County	County Name
LA	001	Acadia	LA	065	Madison
LA	003	Allen	LA	067	Morehouse
LA	005	Ascension	LA	069	Natchitoches
LA	007	Assumption	LA	071	Orleans
LA	009	Avoyelles	LA	073	Ouachita
LA	011	Beauregard	LA	075	Plaquemines
LA	013	Bienville	LA	077	Pointe Coupee
LA	015	Bossier	LA	079	Rapides
LA	017	Caddo	LA	081	Red River
LA	019	Calcasieu	LA	083	Richland

LA	021	Caldwell	LA	085	Sabine
LA	023	Cameron	LA	087	Saint Bernard
LA	025	Catahoula	LA	089	Saint Charles
LA	027	Claiborne	LA	091	Saint Helena
LA	029	Concordia	LA	093	Saint James
LA	031	De Soto	LA	095	Saint John the Baptist
LA	033	East Baton Rouge	LA	097	Saint Landry
LA	035	East Carroll	LA	099	Saint Martin
LA	037	East Feliciana	LA	101	Saint Mary
LA	039	Evangeline	LA	103	Saint Tammany
LA	041	Franklin	LA	105	Tangipahoa
LA	043	Grant	LA	107	Tensas
LA	045	Iberia	LA	109	Terrebonne
LA	047	Iberville	LA	111	Union
LA	049	Jackson	LA	113	Vermilion
LA	051	Jefferson	LA	115	Vernon
LA	053	Jefferson Davis	LA	117	Washington
LA	055	Lafayette	LA	119	Webster
LA	057	Lafourche	LA	121	West Baton Rouge
LA	059	La Salle	LA	123	West Carroll
LA	061	Lincoln	LA	125	West Feliciana
LA	063	Livingston	LA.	127	Winn

For State Code = 23 - Maine

State	County	County Name	State	County	County Name
ME	001	Androscoggin	ME	017	Oxford
ME	003	Aroostook	ME	019	Penobscot
ME	005	Cumberland	ME	021	Piscataquis
ME	007	Franklin	ME	023	Sagadahoc
ME	009	Hancock	ME	025	Somerset
ME	011	Kennebec	ME	027	Waldo
ME	013	Knox	ME	029	Washington
ME	115	Lincoln	ME	031	York

For State Code = 24 - Maryland

State	County	County Name	State	County	County Name
MD	001	Allegany	MD	027	Howard
NM	003	Anne Arundel	MD	029	Kent
MD	005	Baltimore	MD	031	Montgomery
MD	009	Calvert	MD	033	Prince Georges
MD	011	Caroline	MD	035	Queen Annes
MD	013	Carroll	MD	037	Saint Marys
MD	015	Cecil	MD	039	Somerset
MD	017	Charles	MD	041	Talbot
MD	019	Dorchester	MD	043	Washington
MD	021	Frederick	MD	045	Wicomico
MD	023	Garrett	MD	047	Worcester
MD	025	Harford	MD	510	Baltimore City

For State Code = 25 - Massachusetts

State	County	County Name	State	County	County Name
MA	001	Barnstable	MA	015	Hampshire
MA	003	Berkshire	MA	017	Middlesex
MA	005	Bristol	MA	019	Nantucket
MA	007	Dukes	MA	021	Norfolk
MA	009	Essex	MA	023	Plymouth
MA	011	Franklin	MA	025	Suffolk
MA	013	Hampden	NIA	027	Worcester

For State Code = 26 - Michigan

State	County	County Name	State	County	County Name
MI	001	Alcona	MI	085	Lake
MI	003	Alger	MI	087	Lapeer
MI	005	Allegan	MI	089	Leelanau
MI	007	Alpena	ml	091	Lenawee
MI	009	Antrim	MI	093	Livingston
MI	011	Arenac	MI	095	Luce
MI	013	Baraga	MI	097	Mackinac
MI	015	Bany	ml	099	Macomb
MI	017	Bay	MI	101	Manistee
MI	019	Benzie	MI	103	Marquette
MI	021	Berrien	MI	105	Mason
MI	023	Branch	MI	107	Mecosta
MI	025	Calhoun	MI	109	Menominee
MI	027	Cass	MI	111	Midland
MI	029	Charlevoix	MI	113	Nessaukee
MI	031	Cheboygan	MI	115	Monroe
MI	033	Chippewa	MI	117	Montcahn
MI	035	Clare	MI	119	Montmorency
MI	037	Clinton	MI	121	Muskegon
MI	039	Crawford	MI	123	Newaygo
MI	041	Delta	MI	125	Oakland
MI	043	Dickinson	MI	127	Oceana
MI	045	Eaton	MI	129	Ogemaw
MI	047	Emmet	MI	131	Ontonagon
MI	049	Genesee	MI	133	Osceola
MI	051	Gladwin	MI	135	Oscoda
MI	053	Gogebic	MI	137	Otsego
MI	055	Grand Traverse	MI	139	Ottawa
MI	057	Gratiot	MI	141	Presque Isle
MI	059	Hillsdale	MI	143	Roscommon
MI	061	Houghton	MI	145	Saginaw
MI	063	Huron	MI	147	Saint Clair
MI	065	Ingham	MI	149	Saint Joseph
MI	067	Ionia	MI	131	Sanilac
MI	069	Iosco	ml	133	Schoolcraft

MI	071	Iron	MI	155	Shiawassee
MI	073	Isabella	MI	157	Tuscola
MI	075	Jackson	ml	159	Van Buren
MI	077	Kalamazoo	MI	161	Washtenaw
MI	079	Kalkaska	MI	163	Wayne
MI	081	Kent	MI	165	Wexford
MI	083	Keweenaw			

For State Code = 27 - Minnesota

State	County	County Name	State	County	County Name
MN	001	Aitkin	MN	089	Marshall
MN	003	Anoka	MN	091	Martin
MN	005	Becker	MN	093	Meeker
MN	007	Beltrami	MN	095	Mille Lacs
MN	009	Benton	MN	097	Morrison
MN	011	Big Stone	MN	099	Mower
MN	013	Blue Earth	MN	101	Murray
MN	015	Brown	MN	103	Nicollet
MN	017	Carlton	MN	105	Nobles
NW	019	Carver	MN	107	Norman
MN	021	Cass	MN	109	Olmsted
MN	023	Chippewa	MN	111	Otter Tail
MN	025	Chisago	MN	113	Pennington
MN	027	Clay	MN	113	Pine
MN	029	Clearwater	MN	117	Pipestone
MN	031	Cook	MN	119	Polk
MN	033	Cottonwood	MN	121	Pope
MN	035	Crow Wing	MN	123	Ramsey
MN	037	Dakota	MN	125	Red Lake
MN	039	Dodge	MN	127	Redwood
MN	041	Douglas	MN	129	Renville
MN	043	Faribault	MN	131	Rice
MN	045	Fillmore	MN	133	Rock
NN	047	Freeborn	MN	135	Roseau
MN	049	Goodhue	MN	137	Saint Louis
MN	051	Grant	MN	139	Scott
MN	053	Hennepin	MN	141	Sherburne
MN	055	Houston	MN	143	Sibley
NN	057	Hubbard	MN	145	Steams
MN	059	Isanti	MN	147	Steele
MN	061	Itasca	NN	149	Stevens
MN	063	Jackson	MN	151	Swift
MN	065	Kanabec	MN	153	Todd
MN	067	Kandiyohi	MN	155	Traverse
MN	069	Kittson	MN	157	Wabasha

MN	071	Koochiching	MN	159	Wadena
MN	073	Lac Qui Parie-	MN	161	Waseca
MN	075	Lake	MN	163	Washington
MN	077	Lake of the Woods	MN	165	Watonwan
MN	079	Le Sueur	MN	167	Wilkin
MN	081	Lincoln	MN	169	Winona
MN	083	Lyon	MN	171	Wright
MN	085	McLeod	MN	173	Yellow Medicine
MN	087	Mahnomen			

For State Code = 28 - Mississippi

State	County	County Name	State	County	County Name
MS	001	Adams	MS	083	Leflore
MS	003	Alcom	MS	085	Lincoln
Ms	005	Amite	MS	087	Lowndes
MS	007	Attala	MS	089	Madison
MS	009	Benton	MS	091	Marion
MS	011	Bohvar	MS	093	Marshall
MS	013	Calhoun	MS	095	Monroe
MS	015	Carroll	MS	097	Montgomery
MS	017	Chickasaw	MS	099	Neshoba
MS	019	Choctaw	MS	101	Newton
MS	021	Claiborne	MS	103	Noxubee
MS	023	Clarke	MS	105	Oktibbeha
MS	025	Clay	MS	107	Panola
MS	027	Coahoma	MS	109	Pearl River
MS	029	Copiah	MS	111	Perry
MS	031	Covington	MS	113	Pike
MS	033	De Soto	MS	115	Pontotoc
MS	035	Forrest	MS	117	Prentiss
MS	037	Franklin	MS	119	Quitma
MS	039	George	MS	121	Rankin
MS	041	Greene	MS	123	Scott
MS	043	Grenada	MS	125	Sharke
MS	045	Hancock	MS	127	Simpson
MS	047	Harrison	MS	129	Smith
MS	049	Hinds	MS	131	Stone
MS	051	Holmes	MS	133	Sunflower
MS	053	Humphreys	MS	135	Tallahatchie
MS	055	Issaquena	MS	137	Tate
Ms	057	Itawamba	MS	139	Tippah
Ms	059	Jackson	MS	141	Tishomingo
MS	061	Jasper	MS	143	Tunica
MS	063	Jefferson	MS	145	Union
MS	065	Jefferson Davis	MS	147	Walthall
MS	067	Jones	MS	149	Warren
MS	069	Kemper	MS	151	Washington

MS	071	Lafayette	MS	153	Wayne
MS	073	Lamar	MS	155	Wester
MS	075	Lauderdale	MS	157	Wilkinson
MS	077	Lawrence	MS	159	Winston
MS	079	Leake	MS	161	Yalobusha
MS	081	Lee	MS	163	Yazoo

For State Code = 29 - Missouri

State	County	County Name	State	County	County Name
MO	001	Adair	MO	117	Livingston
MO	003	Andrew	MO	119	McDonald
MO	005	Atchison	MO	121	Macon
MO	007	Audrain	MO	123	Madison
MO	009	Barry	MO	125	Maries
MO	011	Barton	MO	127	Marion
MO	013	Bates	MO	129	Mercer
MO	015	Benton	MO	131	Miller
MO	017	Bollinger	MO	133	Mississippi
MO	019	Boone	MO	135	Moniteau
MO	021	Buchanan	MO	137	Monroe
MO	023	Butler	MO	139	Montgomery
MO	025	Caldwell	MO	141	Morgan
MO	027	Callaway	MO	143	New Madrid
MO	029	Camden	MO	145	Newton
MO	031	Cape Girardeau	MO	147	Nodaway
MO	033	Carroll	MO	149	Oregon
MO	035	Carter	MO	151	Osage
MO	037	Cass	MO	153	Ozark
MO	039	Cedar	MO	155	Perniscot
MO	041	Chariton	MO	157	Perry
MO	043	Christian	MO	159	Pettis
MO	045	Clark	MO	161	Phelps
MO	047	Clay	MO	163	Pike
MO	049	Clinton	MO	165	Platte
MO	051	Cole	MO	167	Polk
MO	053	Cooper	MO	169	Pulaski
MO	055	Crawford	MO	171	Putnam
MO	057	Dade	MO	173	Ralls
MO	059	Dallas	MO	175	Randolph
MO	061	Daviess	MO	177	Ray
MO	063	De Kalb	MO	179	Reynolds
MO	065	Dent	MO	181	Ripley
MO	067	Douglas	MO	183	Saint Charles
MO	069	Dunklin	MO	185	Saint Clair

MO	071	Franklin	MO	186	Sainte Genevieve
MO	073	Gasconade	MO	187	Saint Francois
MO	075	Gentry	MO	189	Saint Louis
MO	077	Creene	MO	195	Saline
MO	079	Grundy	MO	197	Schuyler
MO	081	Harrison	MO	199	Scotland
MO	083	Henry	MO	201	Scott
MO	085	Hickory	MO	203	Shannon
MO	087	Holt	MO	205	Shelby
MO	089	Howard	MO	207	Stoddard
MO	091	Howell	MO	209	Stone
MO	093	Iron	MO	211	Sullivan
MO	095	Jackson	MO	213	Taney
MO	097	Jasper	MO	215	Texas
MO	099	Jefferson	MO	217	Vernon
MO	101	Johnson	MO	219	Warren
MO	103	Knox	MO	221	Washington
MO	105	Laclede	MO	223	Wayne
MO	107	Lafayette	MO	225	Webster
MO	109	Lawrence	MO	227	Worth
MO	111	Lewis	MO	229	Wright
MO	113	Lincoln	MO	310	Saint Louis City
MO	115	Linn			

For State Code = 30 - Montana

State	County	County Name	State	County	County Name
MT	001	Beaverhead	MT	059	Meagher
MT	003	Big Horn	MT	061	Mineral
MT	005	Blaine	MT	063	Missoula
MT	007	Broadwater	MT	065	Musselshell
MT	009	Carbon	MT	067	Park
MT	011	Carter	MT	069	Petroleum
MT	013	Cascade	MT	071	Phillips
MT	015	Chouteau	MT	073	Pondera
MT	017	Custer	MT	075	Powder River
MT	019	Daniels	MT	077	Powell
MT	021	Dawson	MT	079	Prairie
MT	023	Deer Lodge	MT	081	Ravalli
MT	025	Fallon	MT	083	Richland
MT	027	Fergus	MT	085	Roosevelt
MT	029	Flathead	MT	087	Rosebud
MT	031	Gallatin	w	089	Sanders
MT	033	Garfield	MT	091	Sheridan
MT	035	Glacier	MT	093	Silver Bow
MT	037	Golden Valley	MT	095	Stillwater
MT	039	Granite	MT	097	Sweet Grass
MT	041	Hill	MT	099	Teton
MT	043	Jefferson	MT	101	Toole
MT	045	Judith Basin	MT	103	Treasure
MT	047	Lake	MT	105	Valley
MT	049	Lewis And Clark	MT	107	Wheatland
MT	051	Liberty	MT	109	Wibaux
MT	053	Lincoln	MT	111	Yellowstone
MT	055	McCone	MT	113	Yellowstone Natl Park
MT	057	Madison			

For State Code = 31 - Nebraska

State	County	County Name	State	County	County Name
NE	001	Adams	NE	095	Jefferson
NE	003	Antelope	NE	097	Johnson
NE	005	Arthur	NE	099	Kearney

NE	007	Banner	NE	101	Keith
NE	009	Blaine	NE	103	Keya Paha
NE	011	Boone	NE	105	Kimball
NE	013	Box Butte	NE	107	Knox
NE	015	Boyd	NE	109	Lancaster
NE	017	Brown	NE	111	Lincoln
NE	019	Buffalo	NE	113	Logan
NE	021	Burt	NE	115	Loup
NE	023	Butler	NE	117	McPherson
NE	025	Cass	NE	119	Madison
NE	027	Cedar	NE	121	Merrick
NE	029	Chase	NE	123	Morrill
NE	031	Cherry	NE	125	Nance
NE	033	Cheyenne	NE	127	Nemaha
NE	035	Clay	NE	129	Nuckolls
NE	037	Colfax	NE	131	Otoe
NE	039	Cuming	NE	133	Pawnee
NE	041	Custer	NE	135	Perkins
NE	043	Dakota	NE	137	Phelps
NE	045	Dawes	NE	139	Pierce
NE	047	Dawson	NE	141	Platte
NE	049	Deuel	NE	143	Polk
NE	051	Dixon	NE	145	Red Willow
NE	053	Dodge	NE	147	Richardson
NE	055	Douglas	NE	149	Rock
NE	057	Dundy	NE	151	Saline
NE	059	Fillmore	NE	153	Sarpy
NE	061	Franklin	NE	155	Saunders
NE	063	Frontier	NE	157	Scotts Bluff
NE	065	Furnas	NE	159	Seward
NE	067	Gage	NE	161	Sheridan
NE	069	Garden	NE	163	Sherman
NE	071	Garfield	NE	165	Sioux
NE	073	Gosper	NE	167	Stanton
NE	075	Grant	NE	169	Thayer
NE	077	Greeley	NE	171	Thomas
NE	079	Hall	NE	173	Thurston
NE	081	Hamilton	NE	175	Valley

NE	083	Harlan	NE	177	Washington
NE	085	Hayes	NE	179	Wayne
NE	087	Hitchcock	NE	181	Webster
NE	089	Holt	NE	183	Wheeler
NE	091	Hooker	NE	185	York
NE	093	Howard			

For State Code = 32 - Nevada

State	County	County Name	State	County	County Name
NV	001	Churchill	NV	019	Lyon
NV	003	Clark	NV	021	Nffneral
NV	005	Douglas	NV	023	Nye
NV	007	Elko	NV	027	Pershing
NV	009	Esmeralda	NV	029	Storey
NV	011	Eureka	NV	031	Washoe
NV	013	Humboldt	NV	033	White Pine
NV	015	Lander	NV	510	Carson City
NV	017	Lincoln			

For State Code = 33 - New Hampshire

State	County	County Name	State	County	County Name
NH	001	Belknap	NH	011	Hillsborough
NH	003	Carroll	NH	013	Merrimack
NH	005	Cheshire	NH	015	Rockingham
NH	007	Coos	NH	017	Strafford
NH	009	Grafton	NH	019	Sullivan

For State Code = 34 - New Jersey

State	County	County Name	State	County	County Name
NJ	001	Atlantic	NJ	023	Middlesex
NJ	003	Bergen	NJ	025	Monmouth
NJ	005	Burlington	NJ	027	Morris
NJ	007	Camden	NJ	029	Ocean
NJ	009	Cape May	NJ	031	Passaic
NJ	011	Cumberland	NJ	033	Salem
NJ	013	Essex	NJ	035	Somerset
NJ	015	Gloucester	NJ	037	Sussex

NJ	017	Hudson	NJ	039	Union
NJ	019	Hunterdon	NJ	041	Warren
NJ	021	Mercer			

For State Code = 35 - New Mexico

State	County	County Name	State	County	County Name
NM	001	Bernalillo	NM	031	McKinley
NM	003	Catron	NM	033	Mora
NM	005	Chaves	NM	035	Otero
NM	006	Cibola	NM	037	Quay
NM	007	Colfax	NM	039	Rio Arriba
NM	009	Curry	NM	041	Roosevelt
NM	011	De Baca	NM	043	Sandoval
NM	013	Dona Ana	NM	045	San Juan
NM	015	Eddy	NM	047	San Miguel
NM	017	Grant	NM	049	Santa Fe
NM	019	Guadalupe	NM	051	Sierra
NM	021	Harding	NM	053	Socorro
NM	023	Hidalgo	NM	055	Taos
NM	025	Lea	NM	057	Torrance
NM	027	Lincoln	NM	059	Union
NM	028	Los Alamos	NM	061	Valencia
NM	029	Luna			

For State Code = 36 - New York

State	County	County Name	State	County	County Name
NY	001	Albany	NY	063	Niagara
NY	003	Allegany	NY	065	Oneida
NY	005	Bronx	NY	067	Onondaga
NY	007	Broome	NY	069	Ontario
NY	009	Cattaraugus	NY	071	Orange
NY	011	Cayuga	NY	073	Orleans
NY	013	Chautauqua	NY	075	Oswego
NY	015	Chemung	NY	077	Otsego
NY	017	Chenango	NY	079	Putnam
NY	019	Clinton	NY	081	Queens
NY	021	Columbia	NY	083	Rensselaer
NY	023	Cortland	NY	085	Richmond
NY	025	Delaware	NY	087	Rockland
NY	027	Dutchess	NY	089	Saint Lawrence
NY	029	Erie	NY	091	Saratoga

NY	031	Essex	NY	093	Schenectady
NY	033	Franklin	NY	095	Schoharie
NY	035	Fulton	NY	097	Schuyler
NY	037	Genesee	NY	099	Seneca
NY	039	Greene	NY	101	Steuben
NY	041	Hamilton	NY	103	Suffolk
NY	043	Herkimer	NY	105	Sullivan
NY	045	Jefferson	NY	107	Tioga
NY	047	Kings	NY	109	Tompkins
NY	049	Lewis	NY	111	Ulster
NY	051	Livingston	NY	113	Warren
NY	053	Madison	NY	115	Washington
NY	055	Monroe	NY	117	Wayne
NY	057	Montgomery	NY	119	Westchester
NY	059	Nassau	NY	121	Wyoming
NY	061	New York	NY	123	Yates

For State Code = 37 - North Carolina

State	County	County Name	State	County	County Name
NC	001	Alamance	NC	101	Johnston
NC	003	Alexander	NC	103	Jones
NC	005	Alleghany	NC	105	Lee
NC	007	Anson	NC	107	Lenoir
NC	009	Ashe	NC	109	Lincoln
NC	011	Avery	NC	111	McDowell
NC	013	Beaufort	NC	113	Macon
NC	015	Bertie	NC	115	Madison
NC	017	Bladen	NC	117	Martin
NC	019	Brunswick	NC	119	Mecklenburg
NC	021	Buncombe	NC	121	Mitchell
NC	023	Burke	NC	123	Montgomery
NC	025	Cabarrus	NC	125	Moore
NC	027	Caldwell	NC	127	Nash
NC	029	Camden	NC	129	New Hanover
NC	031	Carteret	NC	131	Northampton
NC	033	Caswell	NC	133	Onslow
NC	035	Catawba	NC	135	Orange
NC	037	Chatham	NC	137	Pamlico
NC	039	Cherokee	NC	139	Pasquotank
NC	041	Chowan	NC	141	Pender
NC	043	Clay	NC	143	Perquimans
NC	045	Cleveland	NC	145	Person
NC	047	Columbus	NC	147	Pitt
NC	049	Craven	NC	149	Polk
NC	051	Cumberland	NC	151	Randolph
NC	053	Currituck	NC	153	Richmond
NC	055	Dare	NC	155	Robeson
NC	057	Davidson	NC	157	Rockingham
NC	059	Davie	NC	159	Rowan
NC	061	Duplin	NC	161	Rutherford
NC	063	Durham	NC	163	Sampson
NC	065	Edgecombe	NC	165	Scotland
NC	067	Forsyth	NC	167	Stanly
NC	069	Franklin	NC	169	Stokes

NC	071	Gaston	NC	171	Surry
NC	073	Gates	NC	173	Swam
NC	075	Graham	NC	175	Transylvania
NC	077	Granville	NC	177	Tyrrell
NC	079	Greene	NC	179	Union
NC	081	Guilford	NC	181	Vance
NC	083	Halifax	NC	183	Wake
NC	085	Harnett	-NC	185	Warren
NC	087	Haywood	NC	187	Washington
NC	089	Henderson	NC	189	Watauga
NC	091	Hertford	NC	191	Wayne
NC	093	Hoke	NC	193	Wilkes
NC	095	Hyde	NC	119	Wilson
NC	097	Iredell	NC	197	Yadkin
NC	099	Jackson	NC	199	Yancey

For State Code = 38 - North Dakota

State	County	County Name	State	County	County Name
ND	001	Adams	ND	055	McLean
ND	003	Barnes	ND	057	Mercer
ND	005	Benson	ND	059	Morton
ND	007	Billings	ND	061	Mountrail
ND	009	Bottineau	ND	063	Nelson
ND	011	Bowman	ND	065	Oliver
ND	013	Burke	ND	067	Pembina
ND	015	Burleigh	ND	069	Pierce
ND	017	Cass	ND	071	Ramsey
ND	019	Cavalier	ND	073	Ransom
ND	021	Dickey	ND	075	Renville
ND	023	Divide	ND	077	Richland
ND	025	Dunn	ND	079	Rolette
ND	027	Eddy	ND	081	Sargent
ND	029	Emmons	ND	083	Sheridan
ND	031	Foster	ND	085	Sioux
ND	033	Golden Valley	ND	087	Slope
ND	035	Grand Forks	ND	089	Stark
ND	037	Grant	ND	091	Steele
ND	039	Griggs	ND	093	Stutsman
ND	041	Hettinger	ND	095	Towner
ND	043	Kidder	ND	097	Traill
ND	045	La Moure	ND	099	Walsh
ND	047	Logan	ND	101	Ward
ND	049	McHenry	ND	103	Wells
ND	051	McIntosh	ND	105	Williams
ND	053	McKenzie			

For State Code = 39 - Ohio

State	County	County Name	State	County	County Name
OH	001	Adams	OH	089	Licking
OH	003	Allen	OH	091	Logan
OH	005	Ashland	OH	093	Lorain
OH	007	Ashtabula	OH	095	Lucas
OH	009	Athens	OH	097	Madison

OH	011	Auglaize	OH	099	Mahoning
OH	013	Belmont	OH	101	Manon
OH	015	Brown	OH	103	Medina
OH	017	Butler	OH	105	Meigs
OH	019	Carroll	OH	107	Mercer
OH	021	Champaign	OH	109	Miami
OH	023	Clark	OH	111	Monroe
OH	025	Clermont	OH	113	Montgomery
OH	027	Clinton	OH	115	Morgan
OH	029	Columbiana	OH	117	Morrow
OH	031	Coshocton	OH	119	Muskingum
OH	033	Crawford	OH	121	Noble
OH	035	Cuyahoga	OH	123	Ottawa
OH	037	Darke	OH	125	Paulding
OH	039	Defiance	OH	127	Perry
OH	041	Delaware	OH	129	Pickaway
OH	043	Erie	OH	131	Pike
OH	045	Fairfield	OH	133	Portage
OH	047	Fayette	OH	135	Preble
OH	049	Franklin	OH	137	Putnam
OH	051	Fulton	OH	130	Richland
OH	053	Gallia	OH	141	Ross
OH	055	Geauga	OH	143	Sandusky
OH	057	Greene	OH	145	Scioto
OH	059	Guernsey	OH	147	Seneca
OH	061	Hamilton	OH	149	Shelby
OH	063	Hancock	OH	151	Stark
OH	065	Hardin	OH	153	Summit
OH	067	Harrison	OH	155	Trumbull
OH	069	Henry	OH	157	Tuscarawas
OH	071	Highland	OH	159	Union
OH	073	Hocking	OH	161	Van Wert
OH	075	Holmes	OH	163	Vinton
OH	077	Huron	OH	165	Warren
OH	079	Jackson	OH	167	Washington
OH	081	Jefferson	OH	169	Wayne
OH	083	Knox	OH	171	Williams
OH	085	Lake	OH	173	Wood

OH	087	Lawrence	OH	175	Wyandot
----	-----	----------	----	-----	---------

For State Code = 40 - Oklahoma

State	County	County Name	State	County	County Name
OK	001	Adair	OK	079	Le Flore
OK	003	Alfalfa	OK	081	Lincoln
OK	005	Atoka	OK	083	Logan
OK	007	Beaver	OK	085	Love
OK	009	Beckham	OK	087	McClain
OK	011	Blaine	OK	089	McCurtain
OK	013	Bryan	OK	091	McIntosh
OK	015	Caddo	OK	093	Major
OK	017	Canadian	OK	095	Marshall
OK	019	Carter	OK	097	Mayes
OK	021	Cherokee	OK	099	Murray
OK	023	Chactaw	OK	101	Muskogee
OK	025	Cimarron	OK	103	Noble
OK	027	Cleveland	OK	105	Nowata
OK	029	Coal	OK	107	Okfuskee
OK	031	Comanche	OK	109	Oklahoma
OK	033	Cotton	OK	111	Okmulgee
OK	035	Craig	OK	113	Osage
OK	037	Creek	OK	115	Ottawa
OK	039	Custer	OK	117	Pawnee
OK	041	Delaware	OK	119	Payne
OK	043	Dewey	OK	121	Pittsburg
OK	045	Ellis	OK	123	Pontotoc
OK	047	Garfield	OK	125	Pottawatomie
OK	049	Garvin	OK	127	Pushmataha
OK	051	Grady	OK	129	Roger Mills
OK	053	Grant	OK	131	Rogers
OK	055	Greer	OK	133	Seminole
OK	057	Harmon	OK	135	Sequoyah
OK	059	Harper	OK	137	Stephens
OK	061	Haskell	OK	139	Texas
OK	063	Hughes	OK	141	Tillman
OK	065	Jackson	OK	143	Tulsa
OK	067	Jefferson	OK	145	Wagoner
OK	069	Johnston	OK	147	Washington

OK	071	Kay	OK	149	Washita
OK	073	Kingfisher	OK	151	Woods
OK	075	Kiowa	OK	153	Woodward
OK	077	Latimer			

For State Code = 41 - Oregon

State	County	County Name	State	County	County Name
OR	001	Baker	OR	037	Lake
OR	003	Benton	OR	039	Lane
OR	005	Clackamas	OR	041	Lincoln
OR	007	Clatsop	OR	043	Linn
OR	009	Columbia	OR	045	Malheur
OR	011	Coos	OR	047	Marion
OR	013	Crook	OR	049	Morrow
OR	015	Curry	OR	051	Multnomah
OR	017	Deschutes	OR	053	Polk
OR	019	Douglas	OR	035	Sherman
OR	021	Gilliam	OR	057	Tillamook
OR	023	Grant	OR	059	UmatiHa
OR	025	Hamey	OR	061	Union
OR	027	Hood River	OR	063	Wallowa
OR	029	Jackson	OR	065	Wasco
OR	031	Jefferson	OR	067	Washington
OR	033	Josephine	OR	069	Wheeler
OR	035	Klamath	OR	071	Yamhill

For State Code = 42 - Pennsylvania

State	County	County Name	State	County	County Name
PA	001	Adams	PA	069	Lackawanna
PA	003	Allegheny	PA	071	Lancaster
PA	005	Armstrong	PA	073	Lawrence
PA	007	Beaver	PA	075	Lebanon
PA	009	Bedford	PA	077	Lehigh
PA	011	Berks	PA	079	Luzerne
PA	013	Blair	PA	081	Lycoming
PA	015	Bradford	PA	083	McKean
PA	017	Bucks	PA	085	Mercer
PA	019	Butler	PA	087	Mifflin
PA	021	Cambria	PA	089	Monroe
PA	023	Cameron	PA	091	Montgomery
PA	025	Carbon	PA	093	Montour
PA	027	Centre	PA	095	Northampton

PA	029	Chester	PA	097	Northumberland
PA	031	Clarion	PA	099	Perry
PA	033	Clearfield	PA	101	Philadelphia
PA	035	Clinton	PA	103	Pike
PA	037	Columbia	PA	105	Potter
PA	039	Crawford	PA	107	Schuylkill
PA	041	Cumberland	PA	109	Snyder
PA	043	Dauphin	PA	111	Somerset
PA	045	Delaware	PA	113	Sullivan
PA	047	Elk	PA	115	Susquehanna
PA	049	Erie	PA	117	Tioga
PA	051	Fayette	PA	119	Union
PA	053	Forest	PA	121	Venango
PA	055	Franklin	PA	123	Warren
PA	057	Fulton	PA	125	Washington
PA	059	Greene	PA	127	Wayne
PA	061	Huntingdon	PA	129	Westmoreland
PA	063	Indiana	PA	131	Wyoming
PA	065	Jefferson	PA	133	York
PA	067	Juniata			

For State Code = 44 - Rhode Island

State	County	County Name	State	County	County Name
RI	001	Bristol	RI	007	Providence
RI	003	Kent	RI	009	Washington
RI	005	Newport			

For State Code = 45 - South Carolina

State	County	County Name	State	County	County Name
SC	001	Abbeville	SC	047	Greenwood
SC	003	Aiken	SC	049	Hampton
SC	005	Allendale	SC	051	Horry
SC	007	Anderson	SC	053	Jasper
SC	009	Bamberg	SC	055	Kershaw
SC	011	Barnwell	SC	057	Lancaster
SC	013	Beaufort	SC	059	Laurens
SC	015	Berkeley	SC	061	Lee

SC	017	Calhoun	SC	063	Lexington
SC	019	Charleston	SC	065	McCormick
SC	021	Cherokee	SC	067	Marion
SC	023	Chester	SC	069	Marlboro
SC	025	Chesterfield	SC	071	Newberry
SC	027	Clarendon	SC	073	Oconee
SC	029	Colleton	SC	075	Orangeburg
SC	031	Darlington	SC	077	Pickens
SC	033	Dillon	SC	079	Richland
SC	035	Dorchester	SC	081	Saluda
SC	037	Edgefield	SC	083	Spartanburg
SC	039	Fairfield	SC	085	Sumter
SC	041	Florence	SC	087	Union
SC	043	Georgetown	SC	089	Williamsburg
SC	045	Greenville	SC	091	York

For State Code = 46 - South Dakota

State	County	County Name	State	County	County Name
SD	001	Armstrong	SD	069	Hyde
SD	003	Aurora	SD	071	Jackson
SD	005	Beadle	SD	073	Jerauld
SD	007	Bennett	SD	075	Jones
SD	009	Bon Homme	SD	077	Kingsbury
SD	011	Brookings	SD	079	Lake
SD	013	Brown	SD	081	Lawrence
SD	015	Brule	SD	083	Lincoln
SD	017	Buffalo	SD	085	Lyman
SD	019	Butte	SD	087	McCook
SD	021	Campbell	SD	089	McPherson
SD	023	Charles Mix	SD	091	Marshall
SD	025	Clark	SD	093	Meade
SD	027	Clay	SD	095	Mellette
SD	029	Codington	SD	097	Miner
SD	031	Corson	SD	099	Minnehaha
SD	033	Custer	SD	101	Moody
SD	035	Davison	SD	103	Pennington
SD	037	Day	SD	105	Perkins
SD	039	Deuel	SD	107	Potter
SD	041	Dewey	SD	109	Roberts
SD	043	Douglas	SD	111	Sanborn
SD	045	Edmunds	SD	113	Shannon
SD	047	Fall River	SD	115	Spink
SD	049	Faulk	SD	117	Stanley
SD	051	Grant	SD	119	Sully
SD	053	Gregory	SD	121	Todd
SD	055	Haakon	SD	123	Tripp
SD	057	Hamlin	SD	125	Turner
SD	059	Hand	SD	127	Union
SD	061	Hanson	SD	129	Walworth
SD	063	Harding	SD	133	Washington
SD	065	Hughes	SD	135	Yankton
SD	067	Hutchinson	SD	137	Ziebach

For State Code = 47 - Tennessee

State	County	County Name	State	County	County Name
TN	001	Anderson	TN	097	Lauderdale
TN	003	Bedford	TN	099	Lawrence
TN	005	Benton	TN	101	Lewis
TN	007	Bledsoe	TN	103	Lincoln
TN	009	Blount	TN	105	Loudon
TN	011	Bradley	TN	107	McMinn
TN	013	Campbell	TN	109	McNairy
TN	015	Cannon	TN	111	Macon
TN	017	Carroll	TN	113	Madison
TN	019	Carter	TN	115	Marion
TN	021	Cheatham	TN	117	Marshall
TN	023	Chester	TN	119	Maury
TN	025	Claiborne	TN	121	Meigs
TN	027	Clay	TN	123	Monroe
TN	029	Cocke	TN	125	Montgomery
TN	031	Coffee	TN	127	Moore
TN	033	Crockett	TN	129	Morgan
TN	035	Cumberland	TN	131	Obion
TN	037	Davidson	TN	133	Overton
TN	039	Decatur	TN	135	Perry
TN	041	De Kalb	TN	137	Pickett
TN	043	Dickson	TN	139	Polk
TN	045	Dyer	TN	141	Putnam
TN	047	Fayette	TN	143	Rhea
TN	049	Fentress	TN	145	Roane
TN	051	Franklin	TN	147	Robertson
TN	053	Gibson	TN	149	Rutherford
TN	055	Giles	TN	151	Scott
TN	057	Grainger	TN	153	Sequatchie
TN	059	Greene	TN	155	Sevier
TN	061	Grundy	TN	157	Shelby
TN	063	Hamblen	TN	159	Smith
TN	065	Hamilton	TN	161	Stewart
TN	067	Hancock	TN	163	Sullivan
TN	069	Hardeman	TN	165	Sumner

TN	071	Hardin	TN	167	Tipton
TN	073	Hawkins	TN	169	Trousdale
TN	075	Haywood	TN	171	Unicoi
TN	077	Henderson	TN	173	Union
TN	079	Henry	TN	175	Van Buren
TN	081	Hickman	TN	177	Warren
TN	083	Houston	TN	179	Washington
TN	085	Humphreys	TN	181	Wayne
TN	087	Jackson	TN	183	Weakley
TN	089	Jefferson	TN	185	White
TN	091	Johnson	TN	187	Williamson
TN	093	Knox	TN	189	Wilson
TN	095	Lake			

For State Code = 48 - Texas

State	County	County Name	State	County	County Name
TX	001	Anderson	TX	255	Karnes
TX	003	Andrews	TX	257	Kaufman
TX	005	Angelina	TX	259	Kendall
TX	007	Aransas	TX	261	Kenedy
TX	009	Archer	TX	263	Kent
TX	011	Armstrong	TX	265	Kerr
TX	013	Atascosa	TX	267	Kimble
TX	015	Austin	TX	269	King
TX	017	Bailey	TX	271	Kinney
TX	019	Bandera	TX	273	Kleberg
TX	021	Bastrop	TX	275	Knox
TX	023	Baylor	TX	277	Lamar
TX	025	Bee	TX	279	Lamb
TX	027	Bell	TX	281	Lampasas
TX	029	Bexar	TX	283	LaSalle
TX	031	Blanco	TX	285	Lavaca
TX	033	Borden	TX	287	Lee
TX	035	Bosque	TX	289	Leon
TX	037	Bowie	TX	291	Liberty
TX	039	Brazoria	TX	293	Limestone
TX	041	Brazos	TX	295	Lipscomb
TX	043	Brewster	TX	297	LiveOak
TX	045	Briscoe	TX	299	Llano
TX	047	Brooks	TX	301	Loving
TX	049	Brown	TX	303	Lubbock
TX	051	Burleson	TX	305	Lynn
TX	053	Burnet	TX	307	McCulloch
TX	055	Caldwell	TX	309	McLennan
TX	057	Calhoun	TX	311	McMullen
TX	059	Callahan	TX	313	Madison
TX	061	Cameron	TX	315	Marion
TX	063	Camp	TX	317	Martin
TX	065	Carson	TX	319	Mason
TX	067	Cass	TX	321	Matagorda
TX	069	Castro	TX	323	Maverick

TX	071	Chambers	TX	325	Medina
TX	073	Cherokee	TX	327	Menard
TX	075	Childress	TX	329	Midand
TX	077	Clay	TX	331	Milam
TX	079	Cochran	TX	333	Mills
TX	081	Coke	TX	335	Mitchell
TX	083	Coleman	TX	337	Montague
TX	085	Collin	TX	339	Montgomery
TX	087	Collingsworth	TX	341	Moore
TX	089	Colorado	TX	343	Morris
TX	091	Comal	TX	345	Motley
TX	093	Comanche	TX	347	Nacogdoches
TX	095	Concho	TX	349	Navarro
TX	097	Cooke	TX	351	Newton
TX	099	CoryeH	TX	353	Nolan
TX	101	Cottle	TX	355	Nueces
TX	103	Crane	TX	357	Ochiltree
TX	105	Crockett	TX	359	Oldham
TX	107	Crosby	TX	361	Orange
TX	109	Culberson	TX	363	Palo Pinto
TX	111	Dallam	TX	365	Panola
TX	113	Dallas	TX	367	Parker
TX	115	Dawson	TX	369	Parmer
TX	117	Deaf Smith	TX	371	Pecos
TX	119	Delta	TX	373	Polk
TX	121	Denton	TX	375	Potter
TX	123	De Witt	TX	377	Presidio
TX	125	Dickens	TX	379	Rains
TX	127	Dimmit	TX	381	Randall
TX	129	Donley	TX	383	Reagan
TX	131	Duval	TX	385	Real
TX	133	Eastland	TX	387	Red River
TX	135	Ector	TX	389	Reeves
TX	137	Edwards	TX	391	Refugio
TX	139	Ellis	TX	393	Roberts
TX	141	El Paso	TX	395	Robertson
TX	143	Erath	TX	397	Rockwall
TX	145	Falls	TX	399	Runnels

TX	147	Fannin	TX	401	Rusk
TX	149	Fayette	TX	403	Sabine
TX	151	Fisher	TX	405	San Augustine
TX	153	Floyd	TX	407	San Jacinto
TX	155	Foard	TX	409	San Patricio
TX	157	Fort Bend	TX	411	San Saba
TX	159	Franklin	TX	413	Schleicher
TX	161	Freestone	TX	415	Scurry
TX	163	Frio	TX	417	Shackelford
TX	165	Gaines	TX	419	Shelby
TX	167	Galveston	TX	421	Sherman
TX	169	Garza	TX	423	Smith
TX	171	Gillespie	TX	425	Somervell
TX	173	Glasscock	TX	427	Starr
TX	175	Goliad	TX	429	Stephens
TX	177	Gonzales	TX	1431	Sterling
TX	179	Gray	TX	433	Stonewall
TX	181	Grayson	TX	435	Sutton
TX	183	Gregg	TX	437	Swisher
TX	185	Grimes	TX	439	Tarrant
TX	187	Guadalupe	TX	441	Taylor
TX	189	Hale	TX	443	Terrell
TX	191	Hall	TX	445	Terry
TX	193	Hamilton	TX	447	Throckmorton
TX	195	Hansford	TX	449	Titus
TX	197	Hardeman	TX	451	Tom Green
TX	199	Hardin	TX	453	Trams
TX	201	Harris	TX	455	Trinity
TX	203	Harrison	TX	457	Tyler
TX	205	Hartley	TX	459	Upshur
TX	207	Haskell	TX	461	Upton
TX	209	Hays	TX	463	Uvalde
TX	211	HemphW	TX	465	Val Verde
TX	213	Henderson	TX	467	Van Zandt
TX	215	Hidalgo	TX	469	Victoria
TX	217	Hill	TX	471	Walker
TX	219	Hockley	TX	473	Waller
TX	221	Hood	TX	475	Ward

TX	223	Hopkins	TX	477	Washington
TX	225	Houston	TX	479	Webb
TX	227	Howard	TX	481	Wharton
TX	229	Hudspeth	TX	483	Wheeler
TX	231	Hunt	TX	485	Wichita
TX	233	Hutchinson	TX	487	Wilbarger
TX	235	Irion	TX	489	Willacy
TX	237	Jack	TX	491	Williamson
TX	239	Jackson	TX	493	Wilson
TX	241	Jasper	TX	495	Winkler
TX	243	Jeff Davis	TX	497	Wise
TX	245	Jefferson	TX	499	Wood
TX	247	Jim Hogg	TX	501	Yoakum
TX	249	Jim Wells	TX	503	Young
TX	251	Johnson	TX	505	Zapata
TX	253	Jones	TX	507	Zavala

For State Code = 49 - Utah

State	County	County Name	State	County	County Name
UT	001	Beaver	UT	031	Piute
UT	003	Box Elder	UT	033	Rich
UT	005	Cache	UT	035	Salt Lake
UT	007	Carbon	UT	037	San Juan
UT	009	Daggett	UT	039	Sanpete
UT	011	Davis	UT	041	Sevier
UT	013	Duchesne	UT	043	Summit
UT	015	Emery	UT	045	Tooele
UT	017	Garfield	UT	047	Uintah
UT	019	Grand	UT	049	Utah
UT	021	Iron	UT	051	Wasatch
UT	023	Juab	UT	053	Washington
UT	025	Kane	UT	055	Wayne
UT	027	Millard	UT	057	Weber
UT	029	Morgan			

For State Code = 50 - Vermont

State	County	County Name	State	County	County Name
VT	001	Addison	VT	015	Lamoille
VT	003	Bennington	VT	017	Orange
VT	005	Caledonia	VT	019	Orleans
VT	007	Chittenden	VT	021	Rutland
VT	009	Essex	VT	023	Washington
VT	011	Franklin	VT	025	Windham
VT	013	Grand Isle	VT	027	Windsor

For State Code = 51 - Virginia

State	County	County Name	State	County	County Name
VA	001	Accomack	VA	143	Pittsylvania
VA	003	Albemarle	VA	145	Powhatan
VA	005	Alleghany	VA	147	Prince Edward
VA	007	Amelia	VA	149	Prince George
VA	009	Amherst	VA	153	Prince William
VA	011	Appomattox	VA	155	Pulaski
VA	013	Arlington	VA	157	Rappahannock

VA	015	Augusta	VA	159	Richmond
VA	017	Bath	VA	161	Roanoke
VA	019	Bedford	VA	163	Rockbridge
VA	021	Bland	VA	165	Rockingham
VA	023	Botetourt	VA	167	Russell
VA	023	Brunswick	VA	169	Scott
VA	027	Buchanan	VA	171	Shenandoah
VA	029	Buckingham	VA	173	Smyth
VA	031	Campbell	VA	175	Southampton
VA	033	Caroline	VA	177	Spotsylvania
VA	035	Carroll	VA	179	Stafford
VA	036	Charles City	VA	181	Surry
VA	037	Charlotte	VA	183	Sussex
VA	041	Chesterfield	VA	185	Tazewell
VA	043	Clarke	VA	187	Warren
VA	045	Craig	VA	191	Washington
VA	047	Culpeper	VA	193	Westmoreland
VA	049	Cumberland	VA	195	Wise
VA	051	Dickenson	VA	197	Wythe
VA	053	Dinwiddie	VA	199	York
VA	057	Essex	VA	510	Alexandria
VA	059	Fairfax	VA	515	Bedford
VA	061	Fauquier	VA	520	Bristol
VA	063	Floyd	VA	530	Buena Vista
VA	065	Fluvanna	VA	540	Charlottesville
VA	067	Franklin	VA	550	Chesapeake
VA	069	Frederick	VA	560	Clifton Forge
VA	071	Giles	VA	570	Colonial Heights
VA	073	Gloucester	VA	580	Covington
VA	075	Goochland	VA	590	Danville
VA	077	1 Grayson	VA	595	Emporia
VA	079	Greene	VA	600	Fairfax
VA	081	Greensville	VA	610	Falls Church
VA	083	Halifax	VA	620	Franklin
VA	085	Hanover	VA	630	Fredericksburg
VA	087	Henrico	VA	640	Galax
VA	089	Henry	VA	650	Hampton
VA	091	Highland	VA	660	Harrisonburg

VA	093	Isle of Wight	VA	670	Hopewell
VA	095	James City	VA	678	Lexington
VA	097	King and Queen	VA	680	Lynchburg
VA	099	King George	VA	683	Manassas
VA	101	King William	VA	685	Manassas Park
VA	103	Lancaster	VA	690	Martinsville
VA	105	Le	VA	700	Newport News
VA	107	Loudoun	VA	710	Norfolk
VA	109	Louisa	VA	720	Norton
VA	111	Lunenburg	VA	730	Petersburg
VA	113	Madison	VA	735	Poguoson
VA	115	Mathews	VA	740	Portsmouth
VA	117	Mecklenburg	VA	750	Radford
VA	119	Middlesex	VA	760	Richmond
VA	121	Montgomery	VA	770	Roanoke
VA	123	Nansemond	VA	775	Salem
VA	125	Nelson	VA	780	South Boston
VA	127	New Kent	VA	790	Staunton
VA	131	Northampton	VA	800	Suffolk
VA	133	Northumberland	VA	810	Virginia Beach
VA	135	Nottoway	VA	820	Waynesboro
VA	137	Orange	VA	830	Williamsburg
VA	139	Page	VA	840	Winchester
VA	141	Patrick			

For State Code = 53 - Washington

State	County	County Name	State	County	County Name
WA	001	Adams	WA	041	Lewis
WA.	003	Asotin	WA	043	Lincoln
WA	005	Benton	WA	045	Mason
WA	007	Chelan	WA	047	Okanogan
WA	009	Clallam	WA	049	Pacific
WA	011	Clark	WA	051	Pend Oreille
WA	013	Columbia	WA	053	Pierce
WA	015	Cowlitz	WA	055	San Juan
WA	017	Douglas	WA	057	Skagit
WA	019	Ferry	WA	059	Skamania
WA	021	Franklin	WA	061	Snohomish
WA	023	Garfield	WA	063	Spokane
WA	025	Grant	WA	065	Stevens
WA	027	Grays Harbor	WA	067	Thurston
WA	029	Island	-WA	069	Wahkiakum
WA	031	Jefferson	WA	071	Walla Walla
WA	033	King	WA	073	Whatcom
WA	035	Kitsap	WA	075	Whitman
WA	037,	Kittitas	WA	077	Yakima
WA	039	Klickitat			

For State Code = 54 - West Virginia

State	County	County Name	State	County	County Name
WV	001	Barbour	WV	057	Mineral
WV	003	Berkeley	WV	059	Mingo
WV	005	Boone	WV	061	Monongalia
WV	007	Braxton	WV	063	Monroe
WV	009	Brooke	WV	065	Morgan
WV	011	Cabell	WV	067	Nicholas
WV	013	Calhoun	WV	069	Ohio
WV	015	Clay	WV	071	Pendleton
WV	017	Doddridge	WV	073	Pleasants
WV	019	Fayette	WV	075	Pocahontas
WV	021	Gilmer	WV	077	Preston
WV	023	Grant	WV	079	Putnam

WV	025	Greenbrier	WV	081	Raleigh
WV	027	Hampshire	WV	083	Randolph
WV	029	Hancock	WV	085	Ritchie
WV	031	Hardy	WV	087	Roane
WV	033	Harrison	WV	089	Summers
WV	035	Jackson	WV	091	Taylor
WV	037	Jefferson	WV	093	Tucker
WV	039	Kanawha	WV	095	Tyler
WV	041	Lewis	WV	097	Upshur
WV	043	Lincoln	WV	099	Wayne
WV	045	Logan	WV	101	Webster
WV	047	McDowell	WV	103	Wetzel
WV	049	Marion	WV	105	Wirt
WV	051	Marshall	WV	107	Wood
WV	053	Mason	WV	109	Wyoming
WV	055	Mercer			

For State Code = 55 - Wisconsin

State	County	County Name	State	County	County Name
WI	001	Adaras	WI	073	Marathon
WI	003	Ashland	WI	075	Marinette
WI	005	Barron	WI	077	Marquette
WI	007	Bayfield	WI	078	Menominee
WI	009	Brown	WI	079	Milwaukee
WI	011	Buffalo	WI	081	Monroe
WI	013	Burnett	WI	083	Oconto
WI	015	Calumet	WI	085	Oneida
WI	017	Chippewa	WI	087	Outagamie
WI	019	Clark	WI	089	Ozaukee
WI	021	Columbia	WI	091	Pepin
WI	023	Crawford	WI	093	Pierce
WI	025	Dane	WI	095	Polk
WI	027	Dodge	WI	097	Portage
WI	029	Door	WI	099	Price
WI	031	Douglas	WI	101	Racine
WI	033	Dunn	WI	103	Richland
WI	035	Eau Claire	WI	105	Ro,-Il
WI	037	Florence	WI	107	Rusk
WI	039	Fond Du Lac	WI	109	Saint Croix
WI	041	Forest	WI	111	Sauk
WI	043	Grant	WI	113	Sawyer
WI	045	Green	WI	115	Shawano
WI	047	Green Lake	WI	117	Sheboygan
WI	049	Iowa	WI	119	Taylor
WI	051	Iron	WI	121	Trempealeau
WI	053	Jackson	WI	123	Vernon
WI	055	Jefferson	WI	125	Vilas
WI	057	Juneau	WI	127	Walworth
WI	059	Kenosha	WI	129	Washburn
WI	061	Kewaunee	WI	131	Washington
WI	063	La Crosse	WI	133	Waukesha
WI	065	Lafayette	WI	135	Waupaca
WI	067	Langlade	WI	137	Waushara
WI	069	Lincoln	WI	139	Winnebago

WI	071	Manitowoc	WI	141	Wood
----	-----	-----------	----	-----	------

For State Code = 56 - Wyoming

State	County	County Name	State	County	County Name
WY	001	Albany	WY	025.	Natrona
WY	003	Big Horn	WY	027	Niobrara
WY	005	Campbell	WY	029	Park
WY	007	Carbon	WY	031	Platte
WY	009	Converse	WY	033	Sheridan
WY	011	Crook	WY	035	Sublette
WY	013	Fremont	WY	037	Sweetwater
WY	015	Goshen	WY	039	Teton
WY	017	Hot Springs	WY	041	Uinta
WY	019	Johnson	WY	043	Washakie
WY	021	Laramie	WY	045	Weston
WY	023	Lincoln			

Wilderness areas by Region

Region 1

Adm Unit	Forest	State	Wilderness	ID
0102	Beaverhead NF	MT	Anaconda-Pintlar	47
0102	Beaverhead NF	MT	Lee Metcalf	188
0103	Bitterroot NF	MT	Anaconda-Pintlar	47
0103	Bitterroot NF	ID	Frank Church-River of No Return	136
0103	Bitterroot NF	ID	Selway-Bitterroot	44
0103	Bitterroot NF	MT_	Selway-Bitterroot	44
0104	Kaniksu NF	MT	Cabinet Mountains	50
0104	Kaniksu NF	WA	Salmo-Priest	239
0105	Clearwater NF	ID	Selway-Bitterroot	44
0108	Custer NF	MT	Absaroka-Beartooth	131
0109	Deerlodge NF	MT	Anaconda-Pintlar	47
0110	Flathead NF	MT	Bob Mars .hall	49
0110	Flathead NF	MT	Great Bear	135
0110	Flathead NF	MT	Mission Mountains	52
0111	Gallatin NF	MT	Absaroka-Beartooth	131
0111	Gallatin NF	MT	Lee Metcalf	188
0112	Helena NF	MT	Gates of the Mountains	51
0112	Helena NF	MT	Scapegoat	90
0114	Kootenai NF	MT	Cabinet Mountains	50-
0115	Lewis & Clark NF	MT	Bob Marshall	49
0115	Lewis & Clark NF	MT	Scapegoat	90
0116.	Lolo NF	MT	Rattlesnake	137
0116	Lolo NF	MT	Scapegoat	90
0116	Lolo NF	MT	Selway-Bitterroot	44
0116	Lolo NF	MT	Welcome Creek	123
0117	Nez Perce NF	ID	Frank Church-River of No Return	136
0117	Nez Perce NF	ID	Gospel Hump	122
0117	Nez Perce NF	ID	Hells Canyon	92
0117	Nez Perce NF	ID	Selway-Bitterroot	44

Region 2

Adm Unit	Forest	State	Wilderness	ID
0202	Bighorn NF	WY	Cloud Peak	80
0203	Black Hills NF	SD	Black Elk	172
0204	Gunnison NF	CO	Collegiate Peaks	161
0204	Gunnison NF	CO	Fossil Ridge	416
0204	Gunnison NF	CO	La Garita	32
0204	Uncompahgre NF	CO	Lizard Head	40
0204	Gunnison NF	CO	Maroon Bells-Snowmass	33
0204	Uncompahgre NF	CO	Mount Sneffels	167
0204	Gunnison NF	CO	Powderhorn	413
0204	Gunnison NF	CO	Raggeds	170
0204	Uncompahgre NF	CO	Uncompahgre	37
0204	Uncompahgre NF	CO	Uncompahgre	37
0204	Gunnison NF	CO	West Elk	39
0206	Medicine Bow NF	WY	Encampment River	327
0206	Routt NF	CO	Flat Tops	30
0206	Medicine Bow NF	WY	Huston Park	326
0206	Routt NF	CO	Mount Zirkel	34
0206	Routt NF	CO	Mount Zirkel	34
0206	Routt NF	CO	Neota	168
0206	Routt NF	CO	Never Summer	169
0206	Routt NF	CO	Platte River	348
0206	Medicine Bow NF	WY	Platte River	348
0206	Routt NF	CO	Rawah	35
0206	Routt NF	CO	Sarvis Creek	417
0206	Medicine Bow NF	WY	Savage Run	130
0207	Nebraska NF	NE	Soldier Creek	359
0209	Rio Grande NF	CO	La Garita	32
0209	Rio Grande NF	CO	La Garita	32
0209	San Juan NF @	CO	Lizard Head	40
0209	Rio Grande NF	CO	Sangre de Cristo	414
0209	San Juan NF	CO	South San Juan	171
0209	Rio Grande NF	CO	South San Juan	171
0209	San Juan NF	CO	South San Juan	171
0209	San Juan NF	CO	Wen-dnuche	36
0209	Rio Grande NF	CO	Wen-dnuche	36

0210	Arapaho NF	CO	Byers Peak	412
0210	Roosevelt NF	CO	Cache La Poudre	160
0210	Roosevelt NF	CO	Comanche Peak	162
0210	Arapaho NF	CO	Eagles Nest	31
0210	Roosevelt NF	CO	Indian Peaks	134
0210	Arapaho NF	CO	Mount Evans	165
0210	Roosevelt NF	CO	Neota	168
0210	Arapaho NF	CO	Never Summer	169
0210	Arapaho N-F	CO	Never Summer	169
0210	Arapaho NF	CO	Ptarmigan Peak	418
0210	Roosevelt NF	CO	Rawah	33
0210	Arapaho NF	CO	Vasquez Peak	415
0212	San Isabel NF	CO	Buffalo Peaks	410
0212	Pike NF	CO	Buffalo Peaks	410
0212	San Isabel NF	CO	Collegiate Peaks	161
0212	San Isabel NF	CO	Greenhorn Mountain	411
0212	San Isabel NF	CO	Holy Cross	163
0212	Pike NF	CO	Lost Creek	164
0212	Pike NF	CO	Lost Creek	164
0212	Pike NF	CO	Mount Evans	165
0212	San Isabel NF	CO	Mount Massive	166
0212	San Isabel NF	CO	Sangre de Cristo	414
0214	Shoshone NF	WY	Absaroka-Beartooth	131
0214	Shoshone NF	WY	Fitzpatrick	117
0214	Shoshone NF	WY	North Absaroka	82
0214	Shoshone NF	WY	Popo Agie	83
0214	Shoshone NF	WY	Washakie	85
0215	White River NF	CO	Collegiate Peaks	161
0215	White River NF	CO	Eagles Nest	31
0215	White River NF	CO	Flat Tops	30
0215	White River NF	CO	Holy Cross	163
0215	White River NF	CO	Hunter-Fryingpan	121
0215	White River NF	CO	Hunter-Fryingpan	121
0215	White River NF	CO	Maroon Bells-Snowmass	33
0215	White River NF	CO	Raggeds	170
0415	Targhee NF	WY	Jedediah Smith	325
0415	Targhee NF	WY	Winegar Hole	324

Region 3

Adm Unit	Forest	State	Wilderness	ID
0301	Apache NF	AZ	Bear Wallow	256
0301	Apache NF	NM	Blue Range	154
0301	Apache MF	AZ	Escudilla	251
0301	Apache NF	AZ	Mount Baldy	5
0302	Carson NF	NM	Chama River Canyon	124
0302	Carson NF	NM	Cruces Basin	156
0302	Carson NF	NM	Latir Peak	158
0302	Carson NF	NM	Pecos	59
0302	Carson NF	NM	Wheeler Peak	61
0303	Cibola NF	NM	Apache Kid	133
0303	Cibola NF	NM	Manzano Mountain	125
0303	Cibola NF	NM	Sandia Mountain	126
0303	Cibola NF	NM	Withington	159
0304	Coconino NF	AZ	Fossil Springs	258
0304	Coconino NF	AZ	Kachina Peaks	245
0304	Coconino NF	AZ	Kendrick Mountain	263
0304	Coconino NF	AZ	Mazatzal	4
0304	Coconino.NF	AZ	Munds Mountain	266
0304	Coconino NF	AZ	Red Rock-Secret Mountain	268
0304	Coconino NF	AZ	Strawberry Crater	250
0304	Coconino NF	AZ	Sycamore Canyon	9
0304	Coconino NF	AZ	West Clear Creek	247
0304	Coconino NF	AZ	Wet Beaver	248
0305	Coronado NF	AZ	Chiricahua	2
0305	Coronado NF	AZ	Galiuro	3
0305	Coronado NF	AZ	Miller Peak	264
0305	Coronado NF	AZ	Mount Wrightson	265
0305	Coronado NF	AZ	Pajarita	267
0305	Coronado NF	AZ	Pusch Ridge	118
0305	Coronado NF	AZ	Rincon Mountain	269
0305	Coronado NF	AZ	Santa Teresa	246
0306	Gila NF	NM	Aldo Leopold	152
0306	Gila NF	NM	Blue Range	154
0306	Gila NF	NM	Gila	58
0307	Kaibab NF	AZ	Kanab Creek	252

0307	Kaibab NF	AZ	Kendrick Mountain	263
0307	Kaibab NF	AZ	Saddle Mountain	253
0307	Kaibab NF	AZ	Sycamore Canyon	9
0308	Lincoln NF	NM	Capitan Mountain	155
0308	Lincoln NF	NM	White Mountain	62
0309	Prescott NF	AZ	Apache Creek	254
0309	Prescott NF	AZ	Castle Creek	7
0309	Prescott NF	AZ	Cedar Bench	255
0309	Prescott NF	AZ	Granite Mountain	260
0309	Prescott NF	AZ	Juniper Mesa	262
0309	Prescott NF	AZ	Pine Mountain	6
0309	Prescott NF	AZ	Sycamore Canyon	9
0309	Prescott NF	AZ	Woodchute	249
0310	Santa Fe NF	NM	Chama River Canyon	124
0310	Santa Fe NF	NM	Dome	157
0310	Santa Fe NF	NM	Pecos	59
0310	Santa Fe NF	NM	San Pedro Parks	60
0312	Tonto NF	AZ	Four Peaks	259
0312	Tonto	AZ	Hellsgate	261
0312	Tonto NF	AZ	Mazatzal	4
0312	Tonto NF	AZ	Pine Mountain	6
0312	Tonto NF	AZ	Salome	270
0312	Tonto NF	AZ	Salt River Canyon	271
0312	Tonto NF	AZ	Sierra Ancha	7
0312	Tonto NF	AZ	Superstition	8

Region 4

Adm Unit	Forest	State	Wilderness	ID
0401	Ashley NF	UT	High Uintas	299
0402	Boise NF	ID	Frank Church-River of No Return	136
0402	Boise NF	ID	Sawtooth	43
0403	Bridger NF	WY	Bridger	79
0403	Teton NF	WY	Gros Ventre	323
0403	Teton NF	WY	Teton	86
0406	Chalhs NF	ID	Frank Church-River of No Return	136
0406	Challis NF	ID	Sawtooth	43
0407	Dixie NF	UT	Ashdown Gorge	303
0407	Dixie NF	UT	Box-Death Hollow	304
0407	Dixie	UT	Pine VaHey Mountain	305
0409	Humboldt NF	NV	Currant Mountain	381
0409	Humboldt NF	NV	East Humboldts	382
0409	Humboldt NF	NV	Grant Range	385
0409	Humboldt NF	NV	Jarbidge	54
0409	Humboldt NF	NV	Mount Moriah	386
0409	Humboldt NF	NV	Quinn Canyon	383
0409	Humboldt NF	NV	Ruby Mountains	384
0409	Humboldt NF	NV	Santa Rosa - Paradise Peak	387
0410	Manti-La Sal NF	UT	Dark Canyon	302
0412	Payette NF	ID	Frank Church-River of No Return	136
0412	Payette NF	ID	Hells Canyon	92
0413	Salmon NF	ID	Frank Church-River of No Return	136
0414	Sawtooth NF	ID	Sawtooth	43
0417	Toiyabe NF	NV	Alta Toquima	377
0417	Toiyabe NF	NV	Arc Dome	378
0417	Toiyabe NF	CA	Carson-Iceberg	272
0417	Toiyabe NF	CA	Hoover	18
0417	Toiyabe NF	CA	Mokelumne	20
0417	Toiyabe NF	NV	Mount Charleston	380
0417	Toiyabe NF	NV	Mount Rose	379
0417	Toiyabe NF	NV	Table Mountain	376
0418	Uinta NF	UT	Lone Peak	128
0418	Uinta NF	UT	Mount Nebo	301
0418	Uinta	UT	Mount Timpanogos	300

0419	Wasatch NF	UT	Deseret Peak	306
0419	Wasatch NF	UT	High Uintas	299
0419	Wasatch NF	UT	Lone Peak	128
0419	Cache NF	UT	Mount Naomi	295
0419	Wasatch NF	UT	Mount Olympus	297
0419	Wasatch NF	UT	Twin Peaks	298
0419	Cache NF	UT	Wellsville Mountain	296

Region 5

Adm Unit	Forest	State	Wilderness	ID
0501	Angeles NF	CA	Cucamonga	12
0501	Angeles NF	CA	San Gabriel	14
0501	Angeles NF	CA	Sheep Mountain	287
0502	Cleveland NF	CA	Agua Tibia	10
0502	Cleveland NF	CA	Hauser	278
0502	Cleveland NF	CA	Pine Creek	283
0502	Cleveland NF	CA	San Mateo Canyon	285
0503	Eldorado NF	CA	Desolation	13
0503	Eldorado NF	CA	Mokelumne	20
0504	Inyo NF	CA	Ansel Adams	21
0504	Inyo NF	NV	Boundary Peak	404
0504	Inyo NF	CA	Golden Trout	119
0504	Inyo NF	CA	Hoover	18
0504	Inyo NF	CA	John Muir	87
0504	Inyo NF	CA	South Sierra	290
0505	Klamath NF	CA	Marble Mountain	19
0505	Klamath NF	CA	Russian	284
0505	Klamath NF	CA	Siskiyou	288
0505	Klamath NF	CA	Trinity Alps	291
0506	Lassen NF	CA	Caribou	11
0506	Lassen NF	CA	Ishi	279
0506	Lassen NF	CA	Thousand Lakes	27
0507	Los Padres NF	CA	Chumash	408
0507	Los Padres NF	CA	Dick Smith	275
0507	Los Padres NF	CA	Garcia	407
0507	Los Padres NF	CA	Machesna Mountain	293
0507	Los Padres NF	CA	Matilija	406
0507	Los Padres NF	CA	San Rafael	25
0507	Los Padres NF	CA	Santa Lucia	120
0507	Los Padres NF	CA	Sespe	405
0507	Los Padres NF-	CA	Silver Peak	409
0507	Los Padres NF	CA	Ventana	28
0507	Los Padres NF	CA	Ventana	28
0508	Mendocino NF	CA	Snow Mountain	289
0508	Mendocino NF	CA	Yolla Bolly-Middle Eel	29

0509	Modoc NF	CA	South Warner	26
0510	Six Rivers NF	CA	North Fork	282
0510	Six Rivers NF	CA	Siskiyou	288
0510	Six Rivers NF	CA	Trinity Alps	291
0510	Six Rivers NF	CA	Yolla Bolly-Middle Eel	29
0511	Plumas NF	CA	Bucks Lake	292
0512	San Bernardino NF	CA	Cucamonga	12
0512	San Bernardino NF	CA	San Gorgonio	23
0512	San Bernardino NF	CA	San Jacinto	24
0512	San Bernardino NF	CA	Santa Rosa	286
0512	San Bernardino NF.	CA	Sheep Mountain	287
0513	Sequoia NF	CA	Dome Land	15
0513	Sequoia NF	CA	Golden Trout	119
0513	Sequoia NF	CA	Jennie Lakes	294
0513	Sequoia NF	CA	Monarch	280
0513	Sequoia NF	CA	South Sierra	290
0514	Shasta NF	CA	Castle Crags	273
0514	Trinity NF	CA	Chanchelulla	274
0514	Shasta NF	CA	Mount Shasta	281
0514	Shasta NF	CA	Trinity Alps	291
0514	Trinity NF	CA	Trinity Alps	291
0514	Trinity NF	CA	Yolla Bolly-Middle Eel	29
0515	Sierra NF	CA	Ansel Adams	21
0515	Sierra NF	CA	Dinkey Lakes	276
0515	Sierra NF	CA	John Muir	87
0515	Sierra NF	CA	Kaiser	94
0515	Sierra NF	CA	Monarch	280
0516	Stanislaus NF	CA	Carson-Iceberg	272
0516	Stanislaus NF	CA	Emigrant	16
0516	Stanislaus NF	CA	Mokelumne	20
0517	Tahoe NF	CA	Granite Chief	277

Region 6

Adm Unit	Forest	State	Wilderness	ID
0601	Deschutes NF	OR	Diamond Peak	64
0601	Deschutes NF	OR	Mount Jefferson	69
0601	Deschutes NF	OR	Mount Thielsen	226
0601	Deschutes NF	OR	Mount Washington	70
0601	Deschutes NF	OR	Three Sisters	73
0602	Fremont NF	OR	Gearhart Mountain	66
0603	Gifford Pinchot NF	WA	Glacier View	231
0603	Gifford Pinchot NF	WA	Goat Rocks	76
0603	Gifford Pinchot NF	WA	Indian Heaven	233
0603	Gifford Pinchot NF	WA	Mount Adams	77
0603	Gifford Pinchot NF	WA	Tatoosh	240
0603	Gifford Pinchot NF	WA	Trapper Creek	242
0603	Gifford Pinchot NF	WA	William O. Douglas	243
0604	Malheur NF	OR	Monument Rock	225
0604	Malheur NF	OR	Strawberry Mountain	72
0605	Snoqualmie NF	WA	Alpine Lakes	93
0605	Mt. Baker NF	WA	Boulder River	227
0605	Snoqualmie NF	WA	Clearwater	229
0605	Mt. Baker NF	WA	Glacier Peak	75
0605	Snoqualmie NF	WA	Goat Rocks	76
0605	Snoqualmie NF	WA	Henry M. Jackson	232
0605	Mt. Baker NF	WA	Henry M. Jackson	232
0605	Mt. Baker NF	WA	Mount Baker	235
0605	Mt. Baker NF	WA	Noisy-Diobsud	237
0605	Snoqualmie NF	WA	Norse Peak	238
0605	Mt. Baker NF	WA	Pasayten	89
0605	Snoqualmie NF	WA	William O. Douglas	243
0606	Mt. Hood NF	OR	Badger Creole	207
0606	Mt. Hood NF	OR	Bull of the Woods	208
0606	Mt. Hood NF	OR	Columbia	205
0606	Mt. Hood NF	OR	Mount Hood	68
0606	Mt. Hood NF	OR	Mount Jefferson	69
0606	Mt. Hood NF	OR	Salmon-Huckleberry	206
0607	Ochoco NF	OR	Black Canyon	222
0607	Ochoco NF	OR	Bridge Creek	220

0607	Ochoco NF	OR	Mill Creek	221
0605	Mt. Baker NF	WA	Henry M. Jackson	232
0605	Mt. Baker NF	WA	Mount Baker	235
0605	Mt. Baker NF	WA	Noisy-Diobsud	237
0605	Snoqualmie NF	WA	Norse Peak	238
0605	Mt. Baker NF	WA	Pasayten	89
0605	Snoqualmie NF	WA	William O. Douglas	243
0606	Mt. Hood NF	OR	Badger Creek	207
0606	Mt. Hood NF	OR	Bull of the Woods	208
0606	Mt. Hood NF	OR	Columbia	205
0606	Mt. Hood NF	OR	Mount Hood	68
0605	Mt. Baker NF	WA	Henry M. Jackson	232
0605	Mt. Baker NF	WA	Mount Baker	235
0605	Mt. Baker NF	WA	Noisy-Diobsud	237
0605	Snoqualmie NF	WA	Norse Peak	238
0605	Mt. Baker NF	WA	Pasayten	89
0605	Snoqualmie NF	WA	William O. Douglas	243
0606	Mt. Hood NF	OR	Badger Creek	207
0606	Mt. Hood NF	OR	Bull of the Woods	208
0606	Mt. Hood NF	OR	Columbia	205
0606	Mt. Hood NF	OR	Mount Hood	68
0606	Mt. Hood NF	OR	Mount Jefferson	69
0606	Mt. Hood NF	OR	Salmon-Huckleberry	206
0607	Ochoco NF	OR	Black Canyon	222
0607	Ochoco NF	OR	Bridge Creek	220
0607	Ochoco NF	OR	Mill Creek	221
0608	Okanogan NF	WA	Lake Chelan-Sawtooth	234
0608	Okanogan NF	WA	Pasayten	89
0609	Olympic NF	WA	Buckhom	228
0609	Olympic NF	WA	Colonel Bob	230
0609	Olympic NF	WA	Mount Skokomish	236
0609	Olympic NF	WA	The Brothers	241
0609	Olympic NF	WA	Wonder Mountain	244
0610	Rogue River NF	CA	Red Buttes	218
0610	Rogue River NF	OR	Red Buttes	218
0610	Rogue River NF	OR	Rogue-Umpqua Divide	213
0610	Rogue River NF	OR	Sky Lakes	219

0611	Siskiyou NF	OR	Grassy Knob	217
0611	Siskiyou NF	OR	Kalmiopsis	67
0611	Siskiyou NF	OR	Red Buttes	218
0611	Siskiyou NF	CA	Siskiyou	288
0611	Siskiyou NF	OR	Wild Rogue	127
0612	Siuslaw NF	OR	Cummins Creek	211
0612	Siuslaw NF	OR	Drift Creek	209
0612	Siuslaw NF	OR	Rock Creek	210
0614	Umatilla NF	OR	North Fork John Day	223
0614	Umatilla NF	OR	North Fork Umatilla	224
0614	Umatilla NF	WA	Wenaha-Tucannon	129
0614	Umatilla NF	OR	Wenaha-Tucannon	129
0615	Umpqua NF	OR	Boulder Creek	212
0615	Umpqua NF	OR	Mount Thielsen	226
0615	Umpqua NF	OR	Rogue-Umpqua Divide	213
0616	Wallowa NF	OR	Eagle Cap	63
0616	Whitman NF	OR	Eagle Cap	65
0616	Wallowa NF	OR	Hells Canyon	92
0616	Whitman NF	OR	Hells Canyon	92
0616	Whitman NF	OR	Monument Rock	223
0616	Whitman NF	OR	North Fork John Day	223
0617	Wenatchee NF	WA	Alpine Lakes	93
0617	Wenatchee NF	WA	Glacier Peak	75
0617	Wenatchee NF	WA	Henry M. Jackson	232
0617	Wenatchee NF	WA	Lake Chelan-Sawtooth	234
0618	Willamette NF	OR	Bull of the Woods	208
0618	Willamette NF	OR	Diamond Peak	64
0618	Willamette NF	OR	Menagerie	215
0618	Willamette NF	OR	Middle Santiam	216
0618	Willamette NF	OR	Mount Jefferson	69
0618	Willaniette NF	OR	Mount Washington	70
0618	Willamette NF	OR	Three Sisters	73
0618	Willamette NF	OR	Waldo Lake	214
0620	Winema NF	OR	Mount Thielsen	226
0620	Winema NF	OR	Mountain Lakes	71

0620	Winema NF	OR	Sky Lakes	219
0621	Colville NF	WA	Salmo-Priest	239

Region 8

Adm Unit	Forest	State	Wilderness	ID
0801	Talladega NF	AL	Cheaha	184
0801	William B. Bankhead NF	AL	Sipsey	100
0802	Daniel Boone NF	KY	Beaver Creek	104
0802	Daniel Boone NF	KY	Clifty	349
0803	Chattahoochee NF	GA	Big Frog	330
0803	Chattahoochee NF	GA	Blood Mountain	402
0803	Chattahoochee NF	GA	Brasstown	351
0803	Chattahoochee NF	GA	Cohutta	110
0803	Chattahoochee NF	GA	Ellicott Rock	107
0803	Chattahoochee NF	GA	Mark Trail	403
0803	Chattahoochee NF	GA	Raven Cliffs	350
0803	Chattahoochee NF	GA	Rich Mountain	353
0803	Chattahoochee NF	GA	Southern Nantahala	204
0803	Chattahoochee NF	GA	Tray Mountain	352
0804	Cherokee NF	TN	Bald River Gorge	332
0804	Cherokee NF	TN	Big Frog	330
0804	Cherokee NF	TN	Big Laurel Branch	357
0804	Cherokee NF	TN	Citico Creek	331
0804	Cherokee NF	TN	Cohutta	110
0804	Cherokee NF	TN	Gee Creek	108
0804	Cherokee NF	TN	Joyce Kilmer-Slickrock	106
0804	Cherokee NF	TN	Little Frog Mountain	354
0804	Cherokee NF	TN	Pond Mountain	355
0804	Cherokee NF	TN	Sampson Mountain	358
0804	Cherokee NF	TN	Unaka Mountain	356
0803	Ocala NF	FL	Alexander Springs	309
0805	Osceola NF	FL	Big Gum Swamp	308
0805	Ocala NF	FL	Billies Bay	312
0805	Apalachicola NF	FL	Bradwell Bay	103
0805	Ocala NF	FL	Juniper Prairie	310
0805	Ocala NF	FL	Little Lake George	311
0805	Apalachicola NF	FL	Mud Swamp-New River	307
0806	Kisatchie NF	LA	Kisatchie Hills	180
0807	Desoto NF	MS	Black Creek	321
0807	Desoto NF	MS	Leaf	322

0809	Ouachita NF	OK	Black Fork Mountain	313
0809	Ouachita NF	AR	Black Fork Mountain	313
0809	Ouachita NF	AR	Caney Creek	101
0809	Ouachita NF	AR	Dry Creek	314
0809	Ouachita NF	AR	Flatside	316
0809	Ouachita NF	AR	Poteau Mountain	315
0809	Ouachita NF	OK	Upper Kiamichi River	374
0810	Ozark NF	AR	East Fork	319
0810	Ozark NF	AR	Hurricane Creek	317
0810	Ozark NF	AR	Leatherwood	320
0810	Ozark NF	AR	Richland Creek	318
0810	Ozark NF	AR	Upper Buffalo	102
0811	Uwharrie NF	NC	Birkhead Mountains	198
0811	Croatan NF	NC	Catfish Lake South	199
0811	Nantahala NF	NC	Ellicott Rock	107
0811	Nantahala NIF	NC	Joyce Kilmer-Slickrock	106
0811	Pisgah NF	NC	Linville Gorge	63
0811	Pisgah NF	NC	Middle Prong	200
0811	Croatan NF	NC	Pocosin	201
0811	Croatan NF	NC	Pond Pine	202
0811	Croatan NF	NC	Sheep Ridge	203
0811	Pisgah NF	NC	Shining Rock	88
0811	Nantahala NF	NC	Southern Nantahala	204
0812	Sumter NF	SC	Ellicott Rock	107
0812	Francis Marion NF	SC	Hell Hole Bay	178
0812	Francis Marion NF	SC	Little Wambaw Swamp	181
0812	Francis Marion NF	SC	Wambaw Creek	179
0812	Francis Marion NF	SC	Wambaw Swamp	177
0813	Davy Crockett NF	TX	Big Slough	335
0813	Sabine NF	TX	Indian Mounds	336
0813	Sam Houston NF	TX	Little Lake Creek	337
0813	Angelina NF	TX	Turkey Hill	333
0813	Angelina NF	TX	Upland Island	334
0814	Jefferson NF	VA	Barbours Creek	362
0814	George Washington NF	VA	Barbours Creek	362
0814	Jefferson NF	VA	Beartown	338
0814	Jefferson NF	VA	James River Face	109
0814	Jefferson NF	VA	Kimberling Creek	339

0814	Jefferson NF	VA	Lewis Fork	340
0814	Jefferson NF	VA	Little Dry Run	341
0814	Jefferson NF	VA	Little Wilson Creek	342
0814	Jefferson NF	WV	Mountain Lake	34
0814	Jefferson NF	VA	Mountain Lake	343
0814	Jefferson NF	VA	Peters Mountain	344
0814	George Washington NF	VA	Ramseys Draft	346
0814	George Washington NF	VA	Rich Hole	361
0814	George Washington NF	VA	Rough Mountain	360
0814	George Washington NF	VA	Saint Mary's	347
0814	George Washington NF	VA	Shawvers Run	363
0814	Jefferson NF	VA	Shawvers Run	363
0814	Jefferson NF	VA	Thunder Ridge	345

Region 9

Adm Unit	Forest	State	Wilderness	ID
0902	Chequamegon NF	WI	Porcupine Lake	190
0902	Chequamegon NF	WI	Rainbow Lake	115
0904	Manistee NF	MI	Nordhouse Dunes	364
0905	Mark Twain NF	MO	Bell Mountain	173
0905	Mark Twain NF	MO	Devils Backbone	176
0905	Mark Twain NIF	MO	Hercules-Glades	116
0905	Mark Twain NIF	MO	Irish	189
0905	Mark Twain NF	MO	Paddy Creek	183
0905	Mark Twain NIF	MO	Piney Creek	175
0905	Mark Twain NIF	MO	Rockpile Mountain	174
0906	Nicolet NF	WI	Blackjack Springs	132
0906	Nicolet NF	WI	Headwaters	191
0906	Nicolet NF	WI	Whisker Lake	133
0907	Ottawa NF	MI	McCormick	372
0907	Ottawa NF	MI	Sturgeon River Gorge	366
0907	Ottawa NF	MI	Sylvania	365
0908	Shawnee NF	IL	Bald Knob	395
0908	Shawnee NF	IL	Bay Creek	396
0908	Shawnee NF	IL	Burden Falls	397
0908	Shawnee NF	IL	Clear Springs	398
0908	Shawnee NF	IL	Garden of the Gods	399
0908	Shawnee NF	IL	Lusk Creek	400
0908	Shawnee NF	IL	Panther Den	401
0909	Superior NF	MN	Boundary Waters Canoe Area	45
0910	Hiawatha NF	MI	Big Island Lake	368
0910	Hiawatha NF	MI	Delirium	373
0910	Hiawatha NF	MI	Horseshoe Bay	370
0910	Hiawatha NF	MI	Mackinac	369
0910	Hiawatha NF	MI	Rock River Canyon	367
0910	Hiawatha NF	MI	Round Island	371
0912	Hoosier NF	PA	Charles C. Deam	182
0919	Allegheny NF	PA	Allegheny Islands	328
0919	Allegheny NF	PA	Hickory Creek	329
0920	Green Mountain NF	VT	Big Branch	193
0920	Green Mountain NF	VT	Breadloaf	192

0920	Green Mountain NF	VT	Bristol Cliffs	111
0920	Green Mountain NF	VT	George D. Aiken	195
0920	Green Mountain NF	VT	Lye Brook	112
0920	Green Mountain NF	VT	Peru Peak	194
0921	Monongahela NF	WV	Cranberry	185
0921	Monongahela NF	WV	Dolly Sods	113
0921	Monongahela NF	WV	Laurel Fork North	186
0921	Monongahela NF	WV	Laurel Fork South	187
0921	Monongahela NF	WV	Otter Creek	114
092-2	White Mountain NF	NE	Caribou-Speckled Mountain	388
0922	White Mountain NF	NH	Great Gulf	55
0922	White Mountain NF	NH	Pemiwegasset	196
0922	White Mountain NF	NH	Presidential Range-Dry River	105
0922	White Mountain NF	NH	Sandwich Range	197

Region 10

Adm Unit	Forest	State	Wilderness	ID
1000	Tongass NF	AK	Chuck River	390
1000	Tongass NF	AK	Coronation Island	140
1000	Tongass NF	AK	Endicott River	139
1000	Tongass NF	AK	Karta River	391
1000	Tongass NF	AK	Kootznoowoo	138
1000	Tongass NF	AK	Kuiu	392
1000	Tongass NF	AK	Maurelle Islands	142
1000	Tongass NF	AK	Misty Fjords	143
1000	Tongass NF	AK	Petersburg Creek-Duncan Salt Chuck	144
1000	Tongass NF	AK	Pleasant-Lemusurier-Inian	393
1000	Tongass NF	AK	Russell Fiord	146
1000	Tongass NF	AK	South Baranof	148
1000	Tongass NF	AK	South Etolin	389
1000	Tongass NF	AK	South Prince of Wales	145
1000	Tongass NF	AK	Stikine-LeConte	147
1000	Tongass NF	AK	Tebenkof Bay	149
1000	Tongass NF	AK	Tracy Arm-Fords Terror	150
1000	Tongass NF	AK	Warren Island	141
1000	Tongass NF	AK	West Chichagof-Yakobi	151

Glossary

A

ambient. Surrounding, enveloping conditions. As it pertains to weather at the earth's surface, the conditions measured in the instrument shelter are considered ambient.

annual. A plant that lives for one growing season, starting from a seed each year.

appropriate suppression response. The planned strategy for suppression action (in terms of kind, amount, and timing) on a wildfire that most efficiently meets fire management direction under current and expected burning conditions. The response may range from a strategy of prompt control to one of containment or confinement.

Aspect. Represents the aspect at the weather station site. Used in NFDRS calculations. Valid values are 1 - 8:

1 - N	5 - S
2 - NE	6 - SW
3 - E	7 - W
4 - SE	8 - NW

Average Precip. The historic average annual precipitation for the weather station. Used in NFDRS calculations.

average relative humidity. The arithmetic average of the maximum and minimum relative humidities measured at a fire-danger station from one basic observation time to the next.

B

base fuel model. The fuel model that best represents the fuels on the base area.

basic observation time. The time established to take the fire-dander observation. It should be at that time of day when the fire danger is normally the highest.

batch job. A request or job submitted from the personal computer to the National Interagency Technology Center (NITC) that includes all information necessary to process without further user direction. The job is sent to NITC, processed, and returned to the submitting site.

boundary conditions. The temperature and relative humidity of the boundary layer.

boundary layer. The EMC commensurate with the boundary conditions and precipitation events of the preceding 24 hours.

brush. Scrub vegetation and stands of tree species that do not produce merchantable timber. *Not a synonym for slash.*

Burning Index (BI). A number related to the contribution of fire behavior to the effort of containing a fire.

C

climate class. Defines the drying and wetting rates for annuals, perennials, and woody plants.

completed fire report. A record, which contains the information from an FS-5100-29, that has passed FIRESTAT's error checking process.

confine. To limit fire spread within a predetermined area principally by use of natural or preconstructed barriers or environmental conditions. Suppression action may be minimal and limited to surveillance under appropriate conditions.

contain, containment. The completion of a control line around a fire and any associated spot fires that can reasonably be expected to check the fire's spread.

control. The completion of a control line around a fire and any associated spot fires that can reasonably be expected to hold under foreseeable conditions. Control implies that the line has been burned out and all hot spots that threaten the line have been eliminated.

D

dead fuels. Naturally occurring fuels whose moisture content is governed by relative humidity and precipitation.

Deciduous. When checked, this flag signifies that trees at the weather station site are primarily deciduous. When unchecked, this flag signifies primarily coniferous trees at the weather station site. Used in NFDRS calculations.

dew point. The temperature at which a parcel of air being cooled reaches saturation (100 percent relative humidity).

diurnal. Pertains to daily cycles of temperature, relative humidity, and wind.

drought. A period characterized by a serious moisture deficiency, extensive in area and time.

dry bulb temperature. The temperature of the air.

duff. The partially decomposed organic material of the forest floor that lies beneath the freshly fallen twigs, needles, and leaves.

E

Elevation. The elevation, in feet, of the weather station. Used in NFDRS calculations.

Energy Release Component (ERC). A number related to the available energy (Btu) per unit area (square foot) within the flaming front at the head of a fire.

Equilibrium Moisture Content (EMC). The moisture content that a fuel particle will attain if exposed for an infinite period in an environment of specified constant temperature and humidity. When a fuel particle has reached its EMC, the net exchange of moisture between it and its environment is zero.

escaped fire. A fire that has exceeded or is anticipated to exceed preplanned initial action capabilities, fire management direction, or selected appropriate suppression response.

extinction moisture content. The fuel moisture content, weighted over all the fuel classes, at which the fire will not spread.

F

failed fire report. A record, which contains the information from an FS-5100-29, that did not pass FIRESTAT's error checking process.

fine fuels. The complex of living and dead herbaceous plants and dead woody plant materials less than one-fourth inch in diameter.

Fine Fuel Moisture (FFM). An adjustment to the 1-h TL FM that compensates for the presence of living plant material and the moisture content of that material. The FFM is used in the manual calculation of fire-danger ratings. It replaces the 1-h TL FM and the herbaceous fuel moisture.

firebrand. Any source of heat, natural or human-made, that is capable of igniting natural fuels.

fire-danger rating area. A geographical area within which the fire danger can be assumed to be uniform. It is relatively homogenous in climate, fuels, and topography.

fireline intensity. The rate of heat release per unit length of fire front. The most commonly used units in current fire literature are Btu/sec/ft.

fire management direction. Fire management standards, guidelines, and practices based upon land and resource management objectives. Fire management direction defines the kind, level, and timing of fire protection and use activities, including the appropriate suppression strategies that efficiently meet management objectives for each management area for the range of expected fire behavior conditions.

flaming front. That zone of a moving fire where the combustion is primarily flaming. Behind the flaming front the combustion is primarily glowing or involves the burning out of larger fuels (greater than about three inches in diameter.)

FM1 = FM10. When checked, this flag signifies that the 1-hour fuel moisture is equal to the 10-hour fuel moisture. Used in NFDRS calculations.

forecast area. The geographical area for which a fire weather forecast is specified.

Forest Service acres. The total of National Forest System lands within a fire perimeters regardless of Region and Forest.

Freeze Day of Year. The day of the year (1 to 365) considered to be the historic average day for the first killing frost. Used in NFDRS calculations.

fuel class. A group of fuels possessing common characteristics. In NFDRS, dead fuels are grouped according to their timelag (1-, 10-, 100-, and 1000-hr TL). Living fuels are grouped by whether they are herbaceous (annual or perennial) or woody.

fuel model. A simulated fuel complex for which all the fuel descriptors required by the mathematical fire spread model have been specified.

fuel moisture analog. A device that emulates the moisture response of specific classes of dead fuels. Examples are basswood slats that represent the 1-h TL fuels and half-inch ponderosa pine dowels that represent the 10-h TL fuels. An analog may also be constructed of inorganic materials.

Fuel Moisture Content (also Fuel Moisture) (FM). The water content of a fuel particle expressed as a percent of the oven-dry weight of the fuel particle.

fuel proportion. That length of the traverse distance on a segment, divided by the total length of the assessment line.

G, H

greenup. The beginning of a new cycle of plant growth. The greenup date may occur at different dates for different fuel models.

herb. A plant that does not develop woody, persistent tissue but is relatively soft or succulent and sprouts from the base (perennials) or develops from seed (annuals) each year. Included are grasses, forbs, and ferns.

herbaceous fuels. Undecomposed material, living or dead, derived from herbaceous plants.

herbaceous vegetation moisture content. The water content of a live herbaceous plant expressed as a percent of the oven-dry weight of the plant.

holdover fires (also sleeper fires). Fires set by lightning but not discovered during the first burning period. In the NFDRS it is assumed that 25 percent of the fires are not discovered until succeeding burning periods.

Human-caused Fire Occurrence Index (HCOI). A value derived from the Human-caused Risk (HCR) sources in a rating area and the Ignition Component (IC). HCOI is interpretable in terms of expected numbers of fires on the rating area.

Human-caused Risk (HCR). A number related to the expected number of human-produced firebrands capable of starting fires that a rating area will be exposed to during the rating period.

human-caused risk scaling factor. A number relating human-caused fire incidence to the Ignition Component (IC) on a rating area. The factor is a statistic based on three to five years of fire occurrence and fire weather data that adjusts the prediction of the basic human-caused fire occurrence model to fit local experience.

humidity. A measure of the water-vapor content of the air.

I

Ignition Component (IC). A rating of the probability that a firebrand will cause a fire requiring suppression action.

initial action. The prompt, preplanned response to a wildfire.

initiating fire. A fire that has recently started and is not crowning or spotting.

insolation. Solar radiation received at the earth's surface.

instrument shelter (also thermoscreen). A naturally or artificially ventilated structure used to shield temperature-measuring instruments from direct sunshine and precipitation.

K, L

KCFAST, KCFAST/PC. A menu-based computer application that automatically builds and submits customized jobs from your personal computer to the IBM mainframe computer at the USDA National Information Technology Center in Kansas City.

lesser live fuels. Grasses and forbs; low nonwoody plants, annual and perennial.

Lightning Activity Level (LAL). A numerical rating of one to six, keyed to the start of thunderstorms and the frequency and character of cloud-to-ground lightning,

forecasted or observed on a rating area during the rating period.

Lightning Fire Occurrence Index (LOI). A numerical rating of the potential occurrence of lightning-caused fires.

Lightning Risk (LR). A number related to the expected number of cloud-to-ground lightning discharges capable of starting fires that a rating area will be exposed to during the rating period.

lightning risk scaling factor. A factor derived from local thunderstorm and lightning-caused fire records that adjusts the predictions of the basic lightning fire occurrence model to local experience. It accounts for factors not addressed directly by the model such as susceptibility of local fuels to ignition by lightning, fuel continuity, topography, and regional characteristics of thunderstorms.

litter. The top layer of the forest floor, typically composed of loose debris such as branches, twigs, and recently fallen leaves or needles; little altered in structure by decomposition.

live fuels. Naturally occurring fuels whose moisture content is controlled by physiological processes within the living plant. The NFDRS considers only herbaceous plants and woody plant material small enough (leaves and needles, and twigs) to be consumed in the flaming front of a fire.

M, N

mobilization. Documented procedures in the National Interagency Mobilization Guide that defines two categories for equipment and supplies. E (equipment) requests include major fire fighting items such as rolling stock, radios, telecommunications equipment, national caterers, national showers, cache vans ATMUs, and speciality items. S (supply) requests include most NFES cache items.

National Fire Danger Rating System (NFDRS). A uniform fire-danger rating system that focuses on the environmental factors that control the moisture content of fuels.

National Information Technology Center (NITC). The USDA National Information Technology Center in Kansas City.

National Interagency Fire Management Information Database (NIFMID). An Oracle database that contains wildland fire report and weather data.

Net Value Change (NVC). The sum of the changes in resource values on a land area that results from increases (benefits) and decreases (damages) in resource outputs as a consequence of fire.

non-FS acres protected by FS. The total of non-National Forest System lands within Forest Service protection boundaries regardless of ownership.

O

1-hour timelag fuels. Fuels consisting of dead herbaceous plants and roundwood less than one-fourth inch in diameter. Also included is the uppermost layer of litter on the forest floor.

1-hour Timelag Fuel Moisture. The moisture content of the 1-hour timelag fuels.

100-hour timelag fuels. Dead fuels consisting of roundwood one to three inches in diameter, and, very roughly, the forest floor from three-fourths inch to four inches below the surface.

100-hour Timelag Fuel Moisture. The moisture content of the 100-hour timelag fuels.

1000-hour timelag fuels. Dead fuels consisting of roundwood three to eight inches in diameter or the layer of the forest floor more than about four inches below the surface or both.

1000-hour Timelag Fuel Moisture. The moisture content of the 1000-hour timelag fuels.

outside FS protection. The total of non-National Forest System lands outside Forest Service protection boundaries.

P

perennial. A plant that lives for more than two growing seasons. For fire-danger rating purposes, biennial plants are classed with perennials.

precipitation. Any or all the forms of atmospheric water, liquid, or solid that reach the ground. Usually measured to the nearest one-hundredth of an inch.

precipitation duration. The time, in hours and fraction of hours, that a precipitation event lasts. More precisely, for fire-danger rating purposes, it is the length of time that fuels are subjected to liquid water during the day.

prescribed fire. A wildland fire burning under preplanned, specified conditions to accomplish specific planned objectives. It may result from either a planned or unplanned ignition.

prescribed natural fire. A fire resulting from a natural ignition that is designated and managed as a prescribed fire.

R

Relative Humidity. The ratio of the actual amount of water vapor in the air to the amount necessary to saturate the air at that temperature and pressure. It is expressed as a percentage.

Remote Automatic Weather System (RAWS). A WIMS satellite station that automatically tracks and stores weather information.

residence time. 1. The time required for the flaming zone of a fire to pass a stationary point. 2. The width of the flaming zone divided by the rate of spread of the fire.

roundwood. Boles, stems, or limbs of woody material; that portion of the dead wildland fuels that are roughly cylindrical in shape.

S

shrub. A woody perennial plant differing from a perennial herb by its persistent and woody stem; and from a tree by its low stature and habitat of branching from the base.

slash. Branches, bark, tops, cull logs, uprooted stumps, and broken or uprooted trees left on the ground after logging; also debris resulting from thinnings or wind.

slope. Rise or fall (in feet) per 100 feet of horizontal measurement, expressed as a percentage.

Spread Component. (SC). A rating of the forward rate of spread of a head fire.

standard drying day. A day producing the same net drying as a 24-hour period where the dry bulb temperature is maintained at 80° F and the relative humidity at 20 percent.

Staffing Index. A code that identifies the fuel model and forms the basis for fire-danger rating decisions.

statistical wildfire. A wildfire that burns uncontrolled in vegetative or associated flammable material and either requires suppression action to protect natural resources or values associated with natural resources, or is destructive to natural resources.

surface area-to-volume ratio. The ratio of the area of the surface of a fuel particle (square feet) to its volume (cubic feet). The higher the ratio, the *finer* the particle; for example, for grasses this ratio ranges above 2,000; for a half-inch fuel moisture stick it is 109.

T

10-hour timelag fuels. Dead fuels consisting of roundwood one-fourth to one inch in diameter and, very roughly, the layer of litter extending from just below the surface to three-fourths inch below the surface.

10-hour Timelag Fuel Moisture. The moisture content of the 10-hour timelag fuels.

trend forecast. A forecast that generates point forecasts by trending today's observed weather for a weather station.

total fire acres. The total acres burned within a fire perimeter regardless of ownership.

U, V

unplanned ignition. A fire started at random by either natural or human causes, or a deliberate incendiary fire.

volatiles. Readily vaporized organic materials which, when mixed with oxygen, are easily ignited.

W

Weather Information Management System (WIMS). A comprehensive system that manages fire-weather information.

wildfire. An unwanted wildland fire not designated and managed as a prescribed fire and that requires appropriate suppression action.

windspeed. Wind, in miles per hour, measured at 20 feet above the ground or the average height of the vegetative cover, and averaged over at least a ten minute period.