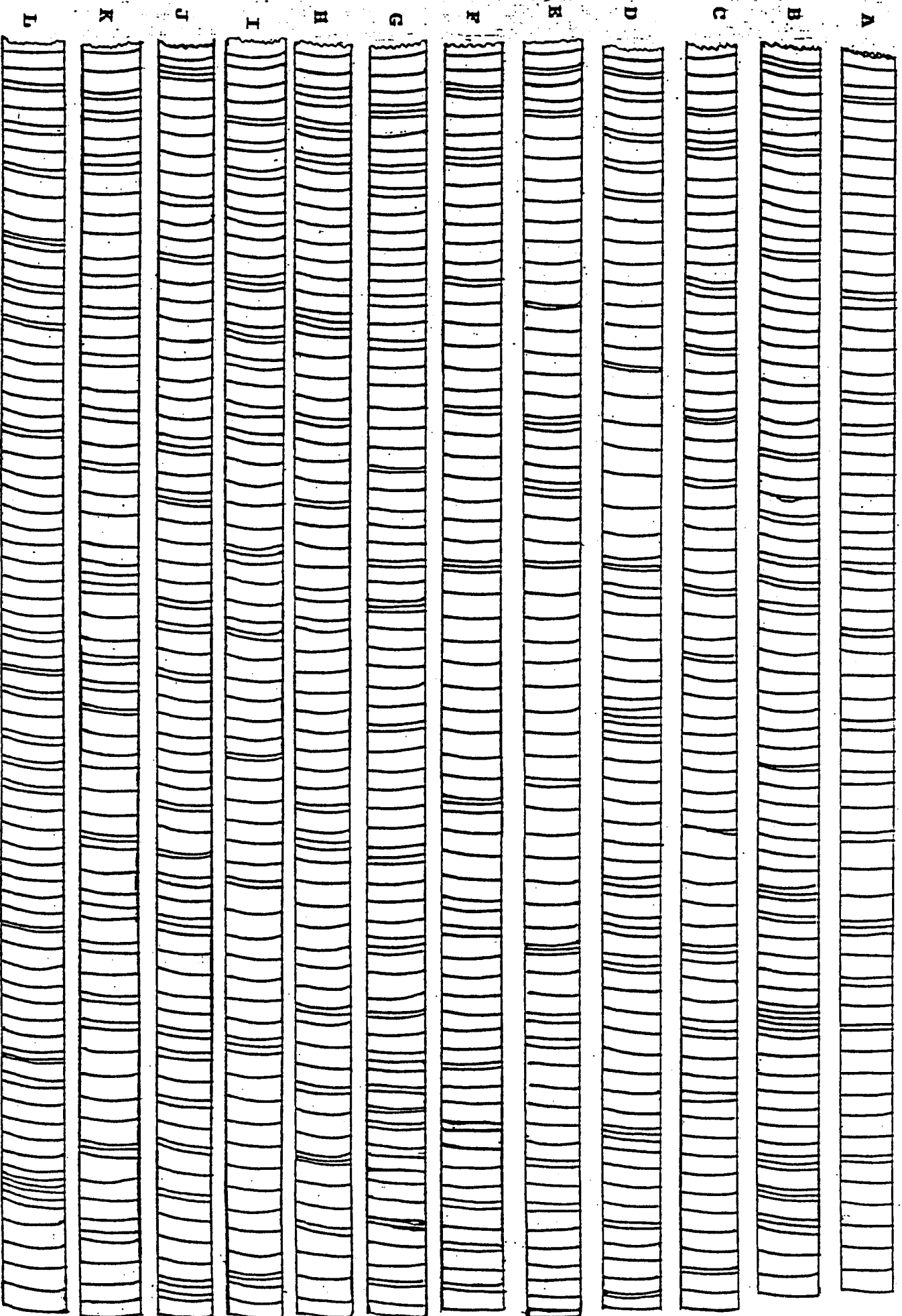
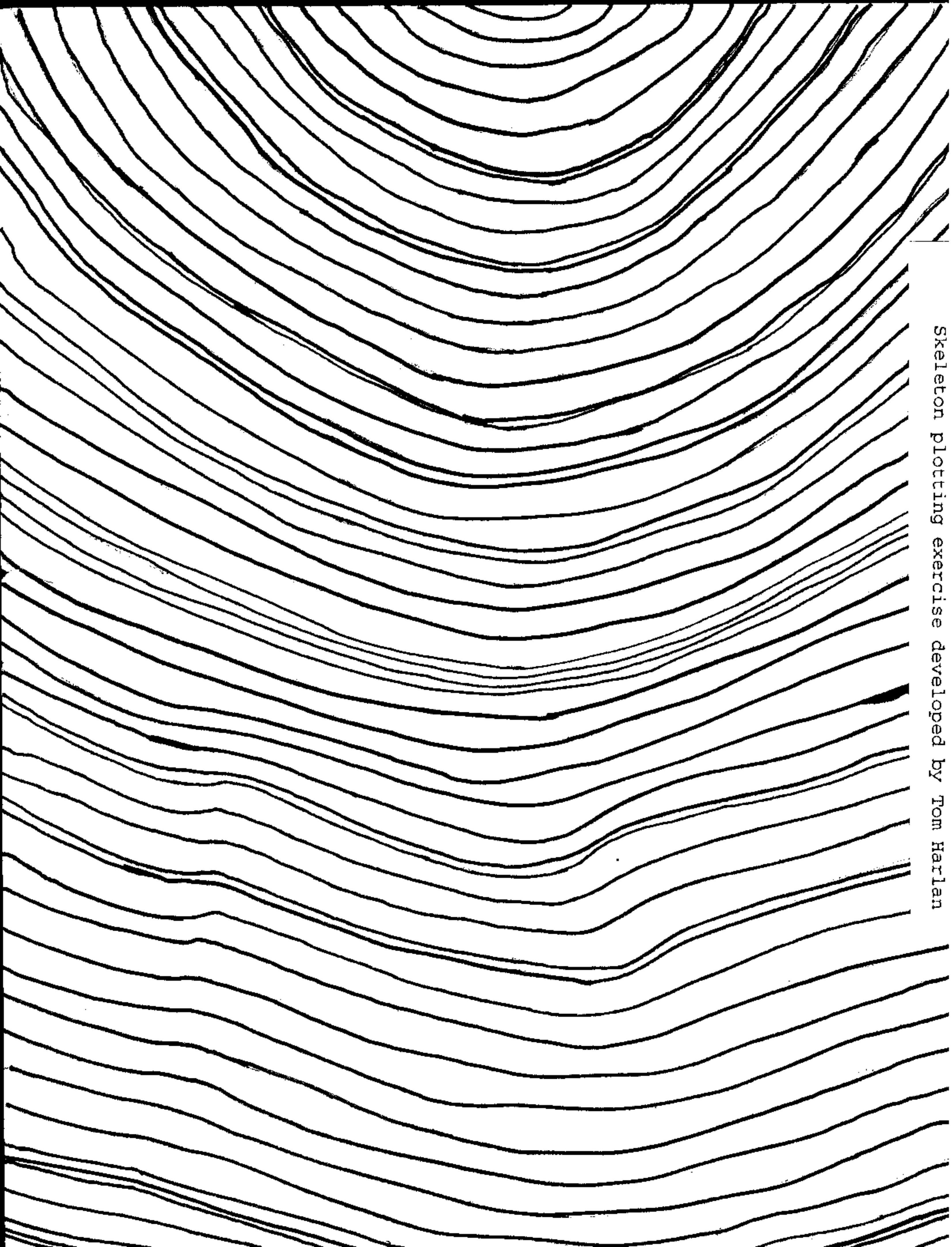


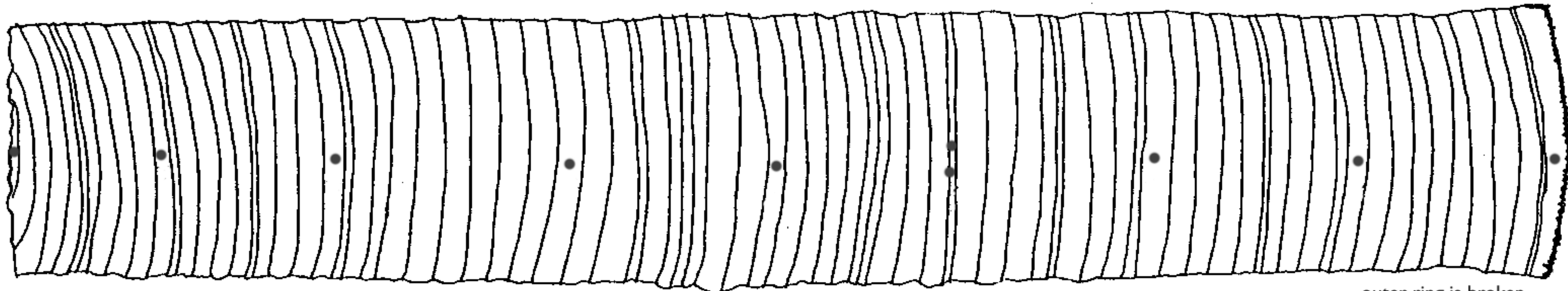


PSEUDO BRISTLECONE PINE CORES: ALL WILL CROSSDATE INTERNALLY AND  
ALSO WILL CROSSDATE WITH THE WHITE MTN. MASTER SOMEWHERE BETWEEN  
3505 AND 2065 B.C.





Skeleton plotting exercise developed by Tom Harlan



inner ring is broken,  
no pith present

Bristlecone Pine Chronology,  
White Mountains, California

"FITS" wood specimen

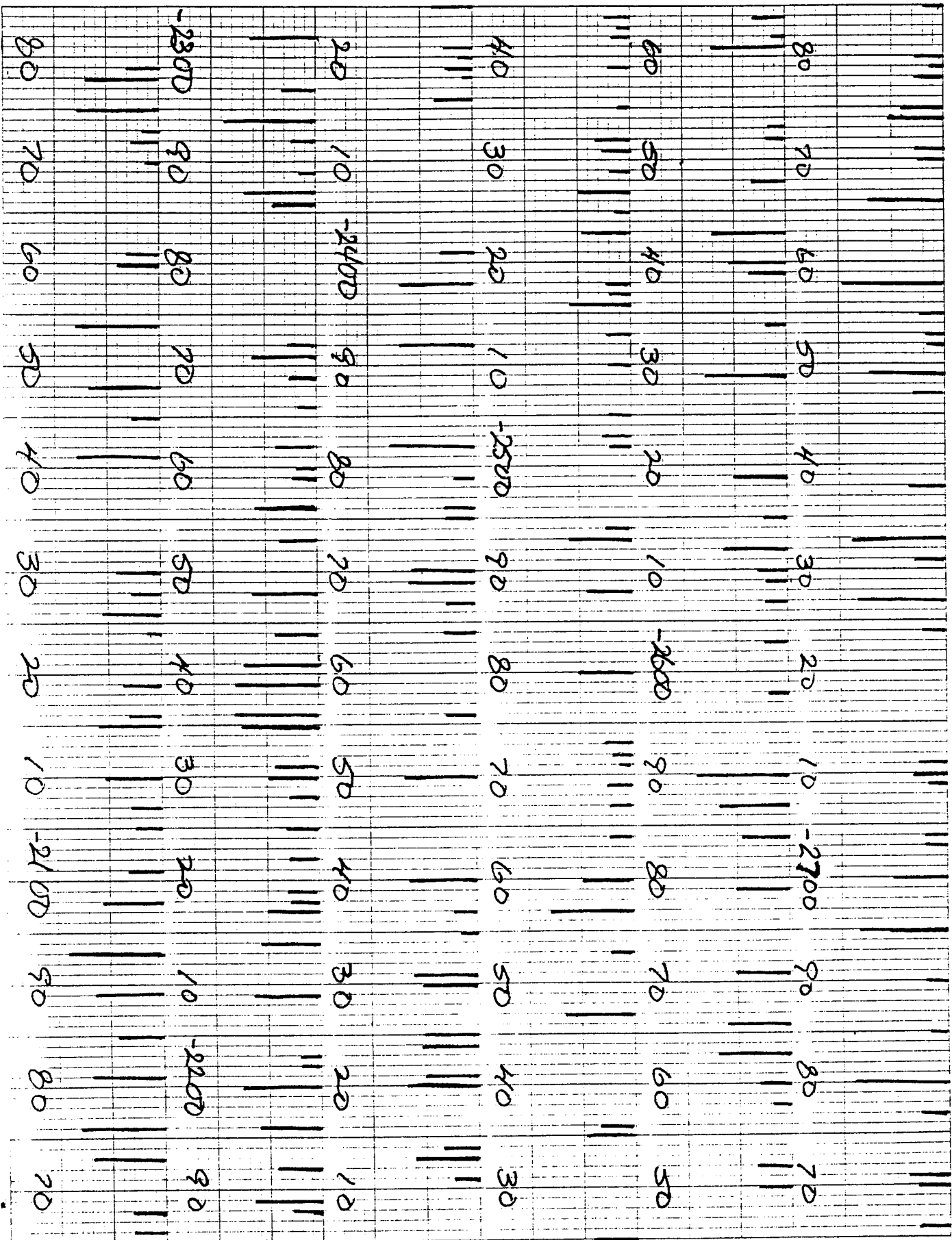
outer ring is broken,  
no bark present



NEPHROSALEM WALK, WHITE MOUNTAIN

BRISTLEBUDS PLUS

CALIFORNIA Pa 10/21/51





METHUSALAH WALK WHITE MOUNTAIN BRISTLECOCKS P/25

CALIFORNIA Pg 2 of 2

